



Mountains Outreach Community Service



Annual Report 2014 -2015

# Table of Contents

	Page
MOCS Statement	2
MOCS Staff and Committee Members	3
Funding Diagram	4
Organisational Structure	5
<u>Reports</u>	
Chairperson	6
Manager	7
Reconciliation work	9
Mid-Mountains Community Hub	11
Parenting Young	15
Brighter Futures	16
Paint the Blue Read	16
Blue Mountains Occasional Care	18
MOCS Mobile Minders	20
Networks and Partnerships	21
<u>Financial Documents</u>	
Independent Audit Report	23
Statement of the Management Committee	
Financial Statements	

# Who is MOCS?

Mountains Outreach Community Service is a community managed organisation which brings people together to strengthen community connections and resilience. We are funded through the Department of Family and Community Services and the Department of Education and Communities to provide a range of free or low cost services in a variety of locations across the Blue Mountains.

These include:

- ❖ Parenting Young Project
- ❖ Brighter Futures Family Work Program
- ❖ Family and Community activities – Mid Mountains Community Hub
- ❖ Reconciliation Projects
- ❖ Supported Playgroups
- ❖ Occasional Childcare
- ❖ Community Development

MOCS **VISION** is to build a healthy interactive community

- ❖ Where vulnerable and disadvantaged community members are well supported and their resilience and quality of life is improved.
- ❖ Where individuals, families and communities participate in opportunities to build a sense of place, community connection and trust through shared experience, knowledge and strong respectful relationships.

MOCS **VALUES**:

- ❖ We respect the knowledge, culture and custodianship of the Aboriginal communities of the Blue Mountains.
- ❖ We value diversity, and advocate for social justice, equity and social inclusion.
- ❖ We value strengths based community development practice, personal and community empowerment and choice.

MOCS **GOALS** are to:

1. Reduce the impact of social and economic disadvantage and reduce social isolation by building social inclusion.
2. Enhance the resilience and connectedness of BM children, their families and communities.
3. Be an agile and robust community organisation.

We are a core member of the Stronger Families Alliance and work collaboratively with many different services, groups and individuals to achieve our goals.

# Members of MOCS

## Staff

MOCS Manager	Lyn Bevington
Financial Administrator	Elaine Cameron
Community Development Worker (including Aboriginal Artists in BM Schools & Paint the Blue Read)	Judith Hawkes
Children's Community Development Worker including Co-ordination of Mid Mountains Community Hub	Liz Smith/Jane Marshall
Parenting Young Facilitator & Brighter Futures Family Worker	Sophie Corbett/Sally Weymouth
BMOCCS Coordinator & Authorised Supervisor	Kerry Knibbs/Cathryn Ferreira
MMM Facilitator & Supported Playgroup Facilitator	Jane Marshall
MMM Worker & Supported Playgroup Assistant	Danielle Wilding-Forbes/ Tanya Clark
EC Educators	Meg Grunsell Simone Witherow Jade Pyle Emily McKay Sarah Rees Maria Scoubiev Nelda King
	Nadia Cameron Cate Harrison Louise Moar Jeannie Elliot Hazel Collins Sally Weymouth Tess White

## Management Committee

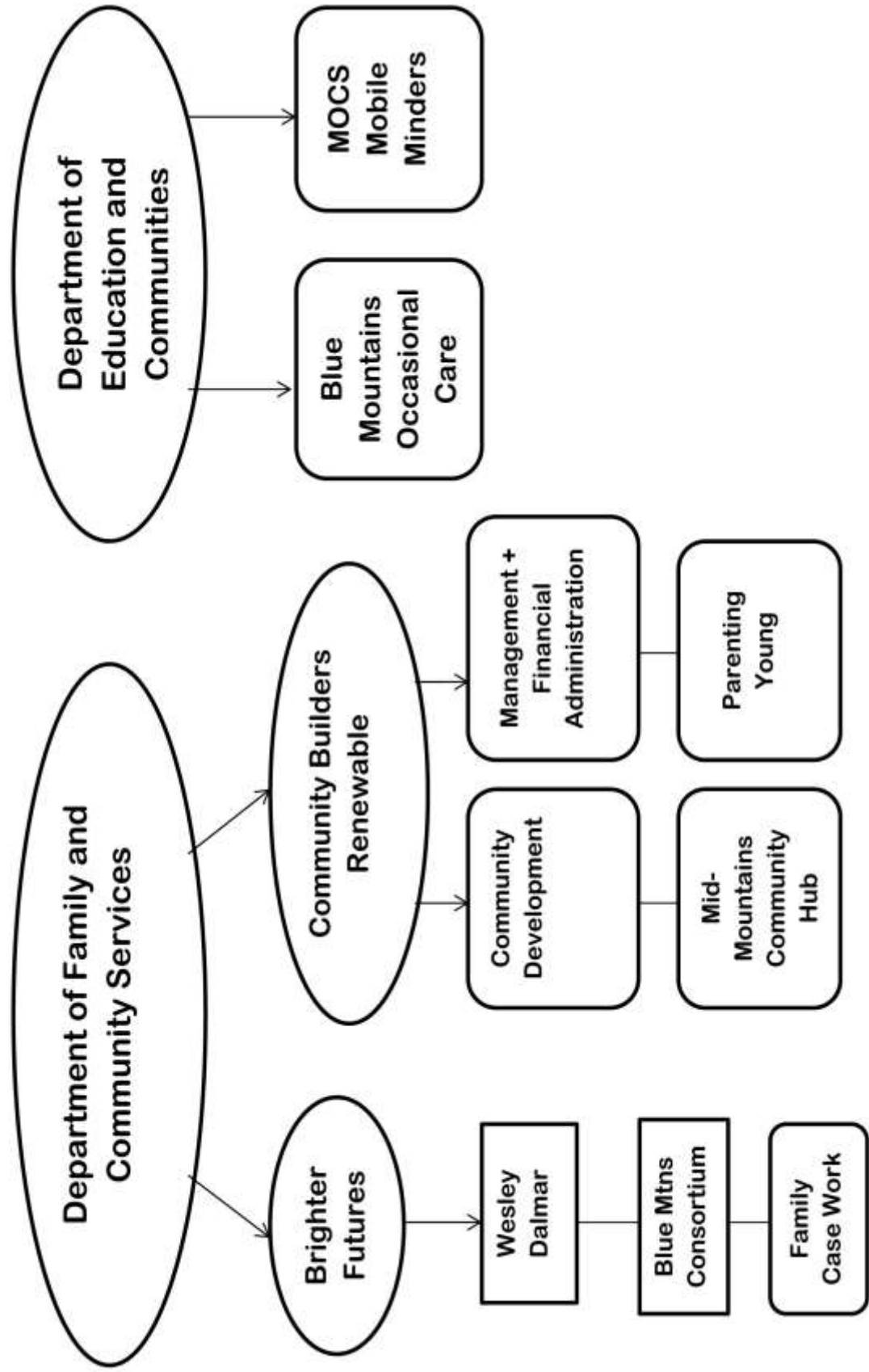
Chairperson	Julianne Abood
Vice Chairperson	Lyn Pagan
Secretary	Susan Ambler
Treasurer	Susan Pearce

## Committee Members

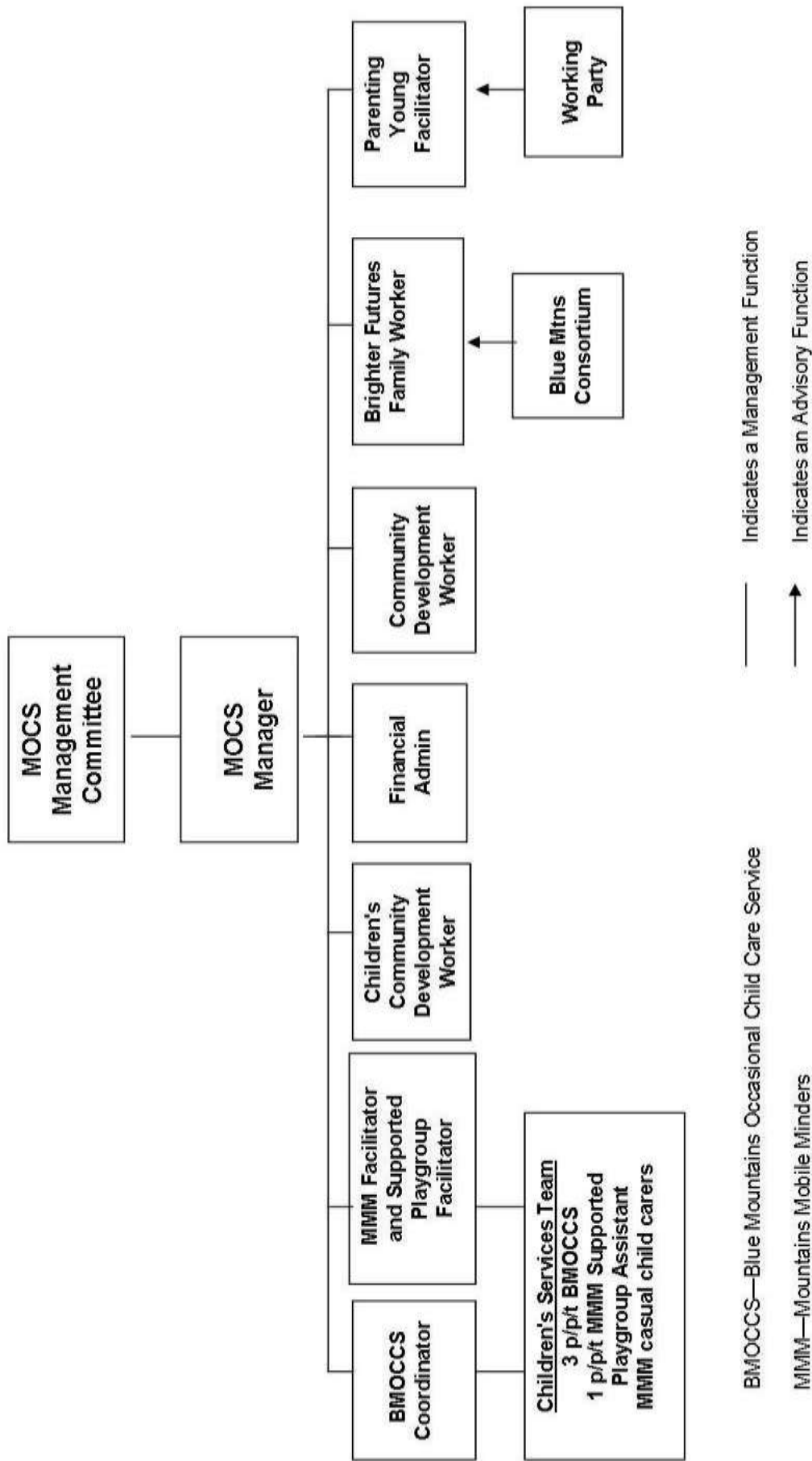
Sandra Hill
Jillian Salz
Loren Hayes-Marshall
Jacqueline Miller

We acknowledge the Darug and Gundungurra people as the Traditional Custodians of the land we live and work on.

Funding Diagram for Mountains Outreach Community Service



Organisational Structure for Mountains Outreach Community Service Inc



# Chairperson's Report

As Chairperson of Mountains Outreach Community Service (MOCS) I would like to sincerely thank all the members of the Management Committee and the MOCS team for the tremendous work achieved over the course of the year. The vast amount of work achieved by MOCS over the year as reflected throughout this annual report is a testament to the effectiveness and efficiency of this dedicated and talented team.

2014-2015 has been a year of steady progress and relative stability with all MOCS. MMM and BMOCCS project initiatives amid a number of staff changes and internal shuffling. I would like to acknowledge the innovative and energetic work that Kerry Knibbs achieved during her time as BMOCCS Co-ordinator and welcome her replacement, Cathryn Ferreira to the MOCS team. Cathryn has stepped into this role seamlessly, continuing to nurture and grow BMOCCS as an innovative and unique children's outreach service for the Blue Mountains. I would also like to acknowledge the many achievements of Danielle Wilding-Forbes during her time with MOCS and thank Jane Marshall, Tanya Clark, Sally Weymouth, Judith Hawkes and Elaine Cameron for their flexibility and versatility to fill fellow team members' leave arrangements. I would also like to acknowledge the inspiring and respectful leadership of Lyn Bevington, the key to maintaining an even keel at every instance of turbulence, and to preserving a happy and productive team.

As Chairperson, I value my role on the BLINN (Blue Mountains Lithgow Integrated Neighbourhood Network) Board and am confident that the continued growth and stabilisation of this strategy will ensure the sustainability and development of community services well into the future. I would like to acknowledge all BLINN members for their commitment to working together as a collective force to ensure the future of service delivery in the Blue Mountains and Lithgow region is maintained, competitive and ready to meet the imminent changes in funding.

I would like to acknowledge all members of the MOCS Management Committee for their valuable contributions to our meeting discussions and generous volunteering of their time over the course of the year. Many thanks and appreciation for the additional time and commitment shown by each committee member who took part in sub-committee working groups required for updating policy and procedures and MOCS staff appraisals. I would also like to acknowledge the contributions of outgoing committee member Loren Hayes-Marshall and thank her sincerely for her energy and commitment to MOCS as an organisation and for her role on the Management Committee.

Thank you to all Blue Mountains community and family service partners who have worked collaboratively with MOCS to build a shared vision of a connected, inclusive and healthy community, including Blue Mountains Women's Health and Resource Centre, Gateway, BM TAFE Outreach, ACRC, BMANTaR, Northcott, Connect, MYST, and all BLINN members.

On a personal note, I look forward to working with the MOCS team and Management Committee over the next year to continue our work together in providing more inclusive and responsive services and programs for all children and families across the Blue Mountains.

**Julianne Abood**

MOCS Chairperson 2015

# Manager's Report

This year seems to have gone by even more quickly than previous years and I would really like to acknowledge and thank the MOCS team for the flexibility, professionalism and dedication they have shown to keep everything ticking over smoothly at MOCS while I took 2 months long service leave and to cover the running of the Hub during Liz Smith's 12 months leave of absence and the running of Parenting Young during Sophie's 6 months leave for her Social Work placement.

Achievements I would like to highlight for 2014-15 are:

- The implementation of our Reconciliation Action Plan (RAP) through our July 15<sup>th</sup> Planning Day and the RAP Working Group. Across our service we have further embedded reconciliation in the work we do – please see other sections of this report for details.
- The other focus of our Planning Day was to build on our team work and integration across our projects and programs and as a result we decided to rebrand Mountains Mobile Minders (MMM) as MOCS Mobile Minders and to revamp our MOCS website to reflect the RAP and our team approach and thanks to our talented TAFE student Madeline Ellwood this was achieved.
- Thanks to the hard work of the MOCS Management Committee, we have continued our revision of policies and procedures, our 6 monthly Work Health Safety audits and annual staff appraisals.

The restructure of Blue Mountains Occasional Care to 3 venues from July 2014 has gone very smoothly with parents and children at Blaxland and Blackheath appreciating the longer day. We farewelled Kerry Knibbs as Co-ordinator in December 2014 and welcomed Cathryn Ferreira in this role from January 2015. She has settled in very well and I commend the great work she is doing – see her report for details. In March 2015 we were audited by Ernst Young for the Dept of Education and Communities and notified that we complied. Unfortunately changes made by DEC have meant that we are no longer able to receive ACCESS funds to support our work with children under 2 ½ who have additional needs which is very disappointing. BMOCS had 100 enrolments this year with the greatest demand for care for 4 month olds to 3 year olds.

As part of rebranding MMM we reviewed fees, booking priorities and reworked the MMM brochure. We also regraded the MMM Child Care worker permanent position to a Supported Playgroup worker on the SCHADS award. Danielle Wilding-Forbes has done an excellent job in this position and we farewelled her at the end of 2014 and welcomed Tanya Clark into this role. To cover Liz's leave Jane Marshall, MMM Facilitator has done a great job as Acting Hub Co-ordinator January – June 2015 and Elaine Cameron has very capably taken on the MMM Facilitator role. Elaine also continued her brilliant job as our Financial Administrator and ever helpful presence as the person who usually answers the MOCS phone. MMM ran our popular supported playgroups which were attended by approx. 80 adults and 120 children. Also MMM provided children's activities at 18 events across the BM and provided childcare at a total of 358 sessions provided by 13 organisations.

Following our Hub review at the end of 2014 we decided to move the playgroup from Lawson Public School to Noble Street Park in Bullaburra which was well attended by families in the summer months and much appreciated. Through the Hub we co-ordinated 168 services,



consulted with 65 people; ran 14 events with 1,136 parents and children participating and ran 30 sessions of community workshops with 367 attendances. We developed 20 resources reached by over 21,000 people. I commend Liz and Jane and our Hub partners for their excellent work in providing a broad range of family friendly activities and workshops.

I also commend Judith Hawkes for her leadership in Paint the Blue Read - in 2015 Reading Week there were 15 events across the BM over 10 days and the *Spring into Stories* partnership event with Westwords in October 2014 was attended by over 100 families and raised over \$2,000 for fire affected families. I also commend Judith for her great work with Faulconbridge PS, a new school in our Aboriginal Artists in BM Schools project this year and with the Aboriginal Education Consultative Group.

Sophie Corbett continues to provide valuable support to vulnerable families both through Brighter Futures and through Parenting Young and I acknowledge the co-operative work in these programs through the BM Consortium and the Parenting Young Working Party respectively. Sally Weymouth very ably filled the Parenting Young Facilitator role while Sophie was on her Social Work placement and we enjoyed her cheerful presence in the MOCS office.

Finally there has been a lot of activity in the Emergency Preparedness area in 2014 -15 and we were successful with two BM Flexible Community Grants to focus on families with young children and build on the work already done by other organisations in the BM using the *Community Connections* survey and the *More Than a Fire Plan* and *Meet Your Street* models. We engaged Sarah Redshaw, Driving Cultures in March 2015 to adapt the *Community Connections* survey so that we can research families' attitudes to preparedness, their existing strengths and community connections and their needs in relation to being prepared. A project Advisory Committee was formed in April. The survey process was conducted over May and June through MOCS existing networks and 118 surveys were completed. 27 respondents had children in the 0-4 age group only, 36 had children in the 5-11 only age group and 53 had children in both age groups. 62% identified Meet Your Street BBQ's as their preferred way to get information and 4 of these are planned for September and October 2015. A full report on this project will be completed by end of 2015.

Lyn Bevington



# Reconciliation work

## Elders Lunch 2014

105 Aboriginal and non-Aboriginal Elders braved snow and road closures on Wednesday 15 October 2014 for the 17<sup>th</sup> Annual Elders Lunch. Aunty Carol Cooper was Master of Ceremonies and entertainment was provided by Col Hardy and Jacinta Tobin. Department of Fair Trading and Aboriginal Healthy for Life joined us with information stalls. As always, the elders enjoyed an excellent lunch provided by the staff and volunteers of BM Food Services and there were raffles, lucky door prizes, the annual colouring competition and lots of talking, catching up with old friends and meeting new people. Unfortunately the group from Lithgow Community Projects were not able to get there due to road closures, but arrangements were made after the lunch for them to still receive their gift bags.

The annual lunch is a partnership project between MOCS, Mid Mountains Neighbourhood Centre, BM Palliative Care, BM Food Services BM Aboriginal Culture and Resource Centre and Gilgai Aboriginal Corporation. This year we were ably assisted by a team of TAFE Community Services students and their teacher, Kay Bazley.

## CHILDRENS WEEK 2014: Koori Songs and Stories at Hazelbrook and Lawson

As part of our Children's Week activities, Uncle Lex Dadd visited the Hazelbrook Scout Hall Playgroup on Thursday 23 October, for a session of stories, songs and games. Uncle Lex also brought along some Aboriginal tools and artefacts for the children to hold and showed us how to make string from tree bark. Around 30 children and 20 mums and dads were part of the event, with some making a special visit to Playgroup for Uncle Lex's song and story time.



Uncle Lex repeated the activities at Occasional Child Care at Lawson on Wednesday 5 November. Children and parents from the Play and Chat group at Lawson Public School joined us for the session. Around 25 children and 8 parents attended this activity.

The events were funded by Blue Mountains City Council as part of Children's Week activities.

## Aboriginal Artists in Blue Mountains Schools

During term 3 2014 we conducted a strategic review of this project which has been running for 4 years and included 17 schools. Feedback from schools indicated that they value the project with 70% returning to participate in subsequent years. One school which has no identified Aboriginal students values the Project as a way of making contacts with the local Aboriginal community and raising reconciliation issues with their students. Other schools with identified Aboriginal students report the project helps increase pride in their culture among Aboriginal students, builds respect of culture among the whole school community and has flow-on effects to other subjects (e.g. English) with students and teachers making reference to the workshops throughout the term. Teachers value having local Aboriginal artists and elders come into the school to share their personal stories



and talk about Aboriginal history, including the Stolen Generations, saying they would not have known how to approach this topic with their students.

Schools that had participated for 3 or 4 years all reported that they now have links with the Aboriginal community and are confident to contact individuals to work with them on a variety of activities. Schools that had participated for only 1 or 2 years feel that they are developing these links, and value the Project in helping them do so. It was generally acknowledged that other projects (e.g. PACE, AECG) have helped develop these links.



As a result of this review MOCS decided to offer the program to new schools this year. However changes to TAFE meant there were no group student placements in 2015 and without the valuable input of students and their supervising teacher, this project had to be much smaller this year. During term 2, Aboriginal Artist, Leanne Tobin provided workshops at Mt Riverview, Ellison and Faulconbridge public schools. While there were fewer schools, for the first time, workshops were provided at early childhood services and not all workshops were held during the one term, but are being spaced out over the school year (and will be included in next year's annual report). Auntie Jacinta Tobin and Lexodius Dadd ran the early childhood workshops.

The Annual Exhibition was held this year at first time participating school, Faulconbridge Public School with the Cultural Sharing Event held on Saturday 30 May as a Reconciliation Week activity. The quality of the student's artwork improves each year and this year's display included artwork by children from Hazelbrook Scout hall Playgroup, Lawson Occasional Care and the Parenting Young Group as well as photos of artwork done by the visiting African Children's Choir in their workshop with Uncle Ed Walker. Uncle Graeme Cooper welcomed us to the Cultural Sharing event, which included performances by the Welcome Singers, with students from Katoomba North, Katoomba and St Canice's primary schools, Wagana Dancers and Jacinta Tobin. This year saw another change, with the Exhibition staying on display in the school hall at Faulconbridge for 10 days, so that the entire school community were able to view and enjoy the artworks.



Paintings by the African Children's Choir

### **Ngarra Wingarru Blue Mountains Aboriginal Education Consultative Group (AECG)**

MOCS is an associate member of this group and regularly attends meetings. MOCS is a member of the Language Working Group which was formed to continue the work started by the PACE project, which ended in June 2015.

## **Reconciliation Promotion**

MOCS has maintained its Facebook presence on issues related to Aboriginal Reconciliation

(<https://www.facebook.com/BlueMountainsReconciliation?ref=hl>). The page promotes our events and others in the community that relate to reconciliation, or that are sent to us to share relating to Aboriginal services and events.

Our publications *Aunty Joan Cooper*: through the front door, *Fun and Games in Gundungurra* and *Sing You Brave People* continue to sell steadily both within the Blue Mountains and from orders outside the LGA.

Laminated Acknowledgement of Country words and the protocol for when to use them have been distributed to MOCS staff and all projects have laminated welcome signs in Darug and Gundungurra language.

## **BM People for Reconciliation/BM Australians for Native Title and Reconciliation**

Lyn continues to convene the monthly meetings of this active and committed group and to support the group's work in the Blue Mountains. We received funding from Dept of Veterans Affairs as part of the ANZAC Centenary Local Grants program for a *Commemorating Aboriginal Diggers from Macquarie electorate* project to research Aboriginal participation in WW1. Margo Daly has been working on the project supported by a number of members of the ANTaR group and has uncovered some great stories. An exhibition of these stories will be held in BM and Hawkesbury in April 2016. Members of the group attended the Apology day event on 13<sup>th</sup> February at Murru Mittigar and there was a lot of interest in the MOCS publications. The annual *Mirror Flash across Gundungurra country* was held on 11<sup>th</sup> April at a new venue in Leura and was absolutely fantastic. It was a clear sunny day and we had a perfect vantage point on the Issac's verandah. With the assistance of Katoomba-Leura RFS the right co-ordinates to hold our mirror were made and the Wingecarribee Reconciliation group gathered at Gibbergunyah near Mittagong could clearly see our mirror flash and we could clearly see theirs.

## **Close the Gap at Hazelbrook Scout Hall playgroup: 19<sup>th</sup> March 2015**

Chris Okunbur from Aboriginal Healthy for Life attended to talk about the work they do and local Close the Gap initiatives. Our TAFE student Cesare Griffin prepared resources for parents and children for the day. Twelve families were actively engaged in this conversation. Chris was very impressed by our playgroup especially the number of fathers attending.

Judith Hawkes

# **Mid Mountains Community Hub**

The Mid Mountains Community Hub (MMCH) continues to provide a range of activities focussing on supporting the needs of families with children up to the age of 12 years. Consultation with the community about the MMCH programme occurs annually via written surveys at holiday fun days and Hub playgroups; and more informally through conversations at many Hub activities. The Hub Steering Committee provides invaluable input and feedback on the programme.

Hub activities are well attended and appreciated by the community, particularly as they are free or very low cost. The diverse range of high quality Hub activities would not be possible without the partnerships formed with other organisations and community groups. And of course it is so valuable to work in with the other MOCS projects, which support and promote the work of the Hub.



This year saw a re-visioning workshop held for the MMCH, facilitated by Tanya James, Stronger Families Alliance Collaboration Convener and the Child and Family Services Development Officer from BMCCC. The workshop was a great opportunity for not only the steering committee members but other interested stakeholders in the community, to come together and look at future goals, aims and strategies for the MMCH - attendance included representation from Connect Child and Family Services, Lawson Public School, Woodford Academy, Gateway Family Services, Mid Mountains Neighbourhood Centre, Mountains Outreach Community Service and CADU – Child and Adolescent Development Unit. The workshop came up with a broad vision for three initiatives for the steering committee.

- Community consultation with people currently engaged with the hub and those who are not engaged with the hub
- Building strong relationships between services: Youth council/ group, connections between Hub partners
- Community ownership, representative of whole community. Higher proportion of community members including business, volunteers, sport clubs, community gardens, playgroups

### **Baby Play Time**

Baby Play Time is an informal drop in for parents with babies up to 18 months to meet others and find support and information. Baby Play Time is held in Heatherbrae at Lawson, the Hub continues to share the facilitation with workers from Connect Child & Family Services who manage Heatherbrae. A number of families attend regularly and have become connected into other community events and programmes and well as forming their own support network.

### **Parenting Courses**

All of the Hub's parenting courses are free, provide childcare (except in the evenings) and are held over a variety of Mid Mountain venues, many in local schools, which makes them very accessible.

**Circle of Security:** 4<sup>th</sup> August to 15<sup>th</sup> September 2014 at Lawson Public School in partnership with Gateway Family Services was fully booked with 10 enrolments.

**Positive Parenting Seminars:** 5<sup>th</sup> November to 19<sup>th</sup> November 2014 presented by Liz Smith at the Bungarrabee Centre. 7 attended.

**Positive Parenting Course:** 11<sup>th</sup> March to 25<sup>th</sup> March 2015 at the Bungarrabee centre, presented by Vicki Martinson from Blue Mountains Family Support and Mary Cunningham from Aged, Disability & Home care. 7 attended.

**The Strong Willed and Sensitive Child:** 20<sup>th</sup> May to 3<sup>rd</sup> June 2015 presented by Barry Palm in partnership with Gateway Family Services. 12 attended.

### **TAFE Outreach**

Blue Mountains TAFE Outreach is a very important partner of the Hub, offering free adult education courses in community settings across a range of subjects. These courses have been very accessible and have provided pathways to further study and work to many in the community who are out of the workforce and/ or are disenfranchised from more traditional study options.

The introduction of Smart & Skilled at the beginning of 2015 has brought changes to TAFE Outreach which now has to charge fees to most people. This has significantly affected enrolment numbers, not only for our Hub but also within others services that partner with TAFE Outreach. Women's Lives, Women's Futures – which had always been a well-attended and enjoyed course,

had to be cancelled due to low enrolments. The following courses were all held at the Bungarrabee Centre in Hazelbrook:

**First Aid training:** 22<sup>nd</sup> July to 2<sup>nd</sup> September 2014. 11 attended with 9 getting their certificate.

**Women's Futures, Women's Lives:** 5<sup>th</sup> May to 16<sup>th</sup> June 2015 - Cancelled

#### **Partnership with Northcott Disability Services:**

This has enabled Northcott clients to access mainstream services and MOCS to make its programmes more accessible to families where there was a disability. Together we have offered 'time out' activities for parents of children with a disability and activities for the whole family who have a child or children with disabilities. Over the year we have tried different things with varying levels of success but we are learning what works best for families and are continuing to work together. Two drop in mornings were held at Lawson Public School, as well as Mum's Pamper morning, Christmas Craft and A1 page profile Workshop. A school holiday fun morning at Mid-Mountains Community Centre on 30<sup>th</sup> September was attended by 20 plus families 8 of whom had a child with additional needs including ADHD. One parent said: *This is the first time I have been able to come to an event like this as it's fully fenced because my child is a runner.*

**Parenting Alone Support (PAS):** this group is for sole parents with school aged children (4-14yrs) to come together for discussions the sharing ideas and supporting each other and was a proposal brought to MOCS by single parent, Gloria Tabi. The group started in February 2015 at Lawson Public school and then in the colder months moved to Hazelbrook Scout Hall. Over 4 sessions of this group there were 79 attendances of single mothers and their children. Attendance has ranged from 12 adults and 17 children to 3 adults and 6 children on a freezing cold night. At least 1 new family has attended each session. There continues to be a core group of 6 families.

Parent feedback has been: that they appreciate getting together in a space where they don't have to cook and they can bring their kids. They see it as a social group which allows parents in similar situations to chat together.

**Young Women's Self Defence:** 11<sup>th</sup> February to 25<sup>th</sup> March at Korowal School in partnership with Blue Mountains Women's Health & Resource Centre. For women and girls 12 years and up, all participants did the course with another family member (usually mother and daughter).

**Bush walking group:** This informal group walks each Wednesday of term and has been meeting for two years. They complete local, short, safe walks. There is a core of 5 people who attend on a regular basis.

#### **School holiday and other children's activities:**

**Bullaburra Family Fun Morning:** Was held on 8<sup>th</sup> April 2015 at Noble Street Park, Bullaburra in partnership with Mid Mountain Neighbourhood Service. 28 adults and 36 children attended bringing their bikes or scooters;

**Women's Scapture – Upcycled Art:** 29<sup>th</sup> and 31<sup>st</sup> August 2014 in partnership with Blue Mountain Women's Health and Resource Service, at Hazelbrook Scout Hall presented by local artist Kathy O'Hara. 21 women attended the workshops where they paid a small amount to spend 4 hours creating amazing art from cleaned up metal, wood and plastic waste saving it from going to landfill.

**Wool Felting workshop:** 20<sup>th</sup> August 2014 at Hazelbrook Scout Hall with local artist Bev Webster, 13 adults and 7 children.



Quote: 'It is wonderful to be able to access activities like the felting workshop. As a low income family it makes a huge difference to me to be able to attend free or low-cost activities as I otherwise would have very few outlets and few opportunities to meet new people in my community. There is value in the activities being stimulating and creative as well, as this is often craved by me as a first time mum who is often home alone. Thanks mocs for your involvement on the felting day, particularly with the child care which also allowed me some time for "me" without my bub strapped to my back'. Rose.

### Hub Supported Playgroups

These are facilitated by MMM workers, Jane Marshall, Danielle Wilding-Forbes and Tanya Clarke. The three playgroups run weekly during school terms at Golden Horizons Park (Tuesdays), Lawson PS (Wednesdays), Hazelbrook Scout Hall (Thursdays) and saw a change in February 2015 from Lawson Public school to Noble street Park in Bullaburra. They are all well attended and new families comment on the welcoming nature of playgroup and continue to attend and make new connections in the community. Each term we host seasonal or cultural celebrations and the scout hall had special visitors. In Term 4 2014 we had Lex Dadd's visit and he spent the morning telling Aboriginal stories and singing songs. Santa on the fire truck was popular at Christmas. On Close the Gap day we had a special visit from Chris Okunbor from Aboriginal Healthy for Life. Our annual evaluation was completed by 15 families and showed that the majority attend playgroup weekly and that most had become aware of other services/groups/courses through attending and felt that their relationship with their child had been strengthened. All 15 said that they had got to know someone that they did not know before and now feel more a part of the local community.



As part of the Aboriginal Artists in schools exhibition the scout hall playgroup had Aunty Carol and Aunty Jacinta come and share stories and songs and help with hand prints for the Reconciliation tree. During Reading week 2015 Scout Hall playgroup was the main hub of activity in Hazelbrook, Billy Booksie was in attendance and 25 adults and 38 children participated in a clay workshop facilitated by Liz Perfect - producing their own Billy Bookies' and had a number of opportunities to engage with stories, rhymes, play. Early literacy continues to be a focus of our activities at playgroup with song and story time becoming more and more popular. We have continued to integrate the principles of the early years learning frame work into our program.



Jane Marshall

## Parenting Young

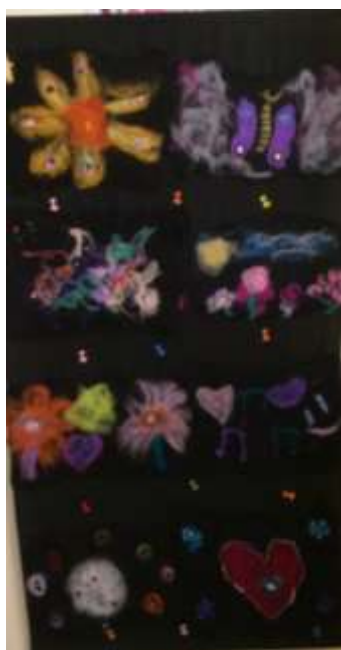
It has been another year of activity and support at the Parenting Young group. We have had a number of families return to the group after having a break and a number of new families join us. We have run 38 sessions which have been attended by 364 young parents and their children. The Parenting Young Facebook group has become another valuable method for young parents to support and communicate with each other. Through this social media platform Parenting Young has been able to share details of local activities and health and parenting information with young parents in a format that is attractive and easy to access. We have found that the private messaging system has allowed families to confidentially seek assistance and advice for issues they might find challenging to discuss at the group.



As part of MOCS's Reconciliation Action Plan, Parenting Young has committed to hosting an Aboriginal cultural activity each term at the group. These sessions have been warmly received by parents and children alike, many of the parents have really enjoyed speaking to the guest presenters afterwards about their own experiences or thoughts on Aboriginal culture. This year we have been



lucky enough to be visited by Uncle Lex who has demonstrated fire making and creating string from bark fibres, Uncle Chris Tobin from NPWS who demonstrated Aboriginal tools and paint making and Aunty Carol Cooper and Aunty Jacinta Tobin who helped families to contribute to the reconciliation tree as part of the Aboriginal Artists in Schools project.



Another exciting project this year has been the making of a beautiful felt wall hanging which was displayed in the Art Street exhibition and will soon be donated to the Maternity Unit at Blue Mountains District ANZAC Memorial Hospital to welcome all the young mothers who birth there.

Other highlights from the year include visits from Billy Booksie and the pop up library, from a solicitor from the Elizabeth Evatt Community Legal centre and from the outreach team at Headspace. The Parenting Young Christmas party was very special this year as we were visited by Santa Claus and his friends from Lawson Fire department.



We thank all of our Working Party members for their continued commitment and support to Parenting Young: Platform Youth Services, Connect Child and Family Services, Mountains Youth Services Team, Nepean Blue Mountains Local Health District, Wimlah Women's and Children's refuge and Outreach services as part of West Connect Domestic Violence Services.

## Brighter Futures

Over the past year the Brighter Futures team have transitioned to a new online data base. The transition has been supported by intensive training both for caseworkers and managers. The data base has a high level of security built in and allows remote access to client files to facilitate quality assurance processes. The transition has been challenging as minor bugs have had to be addressed but the system appears to be working effectively now.

A number of Brighter Futures families attended a camp in Vision Valley in October. One of the things families commented on this year was how much they valued the opportunity to connect with other people who are experiencing similar issues. The Brighter futures team have built on this experience by offering other opportunities for families to come together. Through the BM Consortium, Jade Pyle has been running *Take-a-break*, a weekly drop in session for Brighter Futures families at Heatherbrae in Lawson. This group provides an informal relaxed setting for parents and children to come together, share a light meal and participate in craft activities. The group aims to reduce the social isolation of the families we work with, to offer them an opportunity to share the insights they have gained during their time in the program with others who might benefit from this wisdom and to connect families with other universal services who also use the building. The Mother's day pamper session run this year was a particularly successful iteration of the Take-a-break group with a number of mothers enjoying a free massage and craft activities. The feedback about this group was really positive with many parents expressing feelings of validation and connection.

Sophie Corbett

## Paint the Blue Read

Paint the Blue REaD (PTBR) is the Blue Mountains early learning community project and is part of the Stronger Families Alliance - Creating Child-friendly Communities plan.

Billy Booksie, and his sister Billie, made appearances throughout the year at a variety of community events, including community festivals (e.g. Blackheath Day), community Fun Days (e.g. Bullaburra Fun Day), Story Time @ the Gate (Winmalee) and was a regular visitor at Winmalee Hub activities.

### Spring into Stories

A joint project with WestWords, *Spring into Stories* was held at Mid Mountains Community Centre on Sunday 19 October. Around 120 families joined us for the event, which marked the resilience of our Blue Mountains communities on the anniversary of the 2013 bushfires as well as celebrating children's books and stories.



Around 15 children's authors and illustrators volunteered their time on the day and others donated items for a silent auction. Entry to the day was by donation, with proceeds going to replace books lost by children in last year's bushfires. Well over \$2,000 was raised.

ABC radio's Simon Marnie was MC for the day and Aunty Jacinta Tobin Welcomed us to Country. There was storytelling by Leanne Tobin, Anna Fienberg, Oliver Phommavanh and local Aboriginal storyteller Lex Dadd; Lisa Stewart played the violin while children did drawings; Sarah Davis did a live drawing exhibition with input from the children, with the finished drawing being part of the silent auction and, of course, our local mascot for children's reading, Billy Booksie from Paint the Blue REaD was there.



Books from participating authors were on sale courtesy of The Turning Page Bookshop in Springwood, with authors signing the children's purchases. As well as all this, children went on a kind of treasure hunt, finding their favourite authors and illustrators, who held the answer to a question that they had to tick off (with the author or illustrator's signature) in their treasure-hunters' guide.

With the monies raised and the assistance of Step by Step and The Turning Page Bookshop in Springwood, 130 children of families that had lost their homes in the bushfires received a book voucher as a Christmas present.

### **Mid Mountains Festival**

Billy Booksie, along with the rest of the MOCS team was at the Mid Mountains Festival on Saturday 15 November. Billy had his own Book Nook set up in the Courtyard and had story times throughout the morning assisted by Year 9 Drama students from Katoomba High School – Finn Berryman, Seraph Cain, Hannah Ebbings, Georgia Gailbraith – and their teacher Clare Anstey. Billy had a lovely time sharing stories and rhymes with the children and had lots of photos taken with the boys and girls by their parents. The children and their parents all really appreciated the free books that Billy had for them to take home as well.

### **Reading Week 2015**

Billy Booksie's recognition is growing and so is Reading Week – this year the 'week' lasted nearly two weeks! With some new partners on board, as well as our long-standing ones, there were 15 events over 10 days in 8 townships. 290 children and 140 parents or carers attended the events and every child was given a Billy Booksie Rhymes Booklet and a Reading Week Bookmark. In addition, 25 services and businesses participated in the events and 12 partner agencies helped organise the Week's activities. We were ably assisted by two Early Childhood students from Nirimba TAFE, Melissa Slade and Stephanie Bleicker. Billy Booksie thanks everyone who helped to make the week a success.

### **Billy Booksie Book Boxes**

Reading Week 2015 saw the delivery of the first of Billy Booksie Book Box to the Family and Community Services office in Faulconbridge. The Book Box is placed in the waiting area for children to have books to read while they are waiting at the office. There's an accompanying poster which explains all about the Book Box. We check the Box periodically to replace books which are damaged, or have gone home with children. More Billy Booksie Book Boxes will appear throughout the Mountains in the months to come.

# Blue Mountains Occasional Care

Blue Mountains Occasional Care provides low cost, flexible education and care to families with babies, toddlers and preschool age children in family grouping. The mobile nature of the service enables us to provide this care to families in the lower, mid and upper mountains, once a week. We have historically taken enrolments from all 27 villages across the Blue Mountains for more than 10 years and continue to do so. Our educational program is designed by an Early Childhood Teacher and team of qualified educators using the National Curriculum, called the Early Years Learning Framework. Our priority is to provide quality education and care to families with children 0-5 years, that may otherwise face vulnerability by isolation due to their location, or distance from family support networks. Our outreach work, as a part of MOCS, has also enabled children with a disability or special need to experience early integration support within this service, as a soft entry point to formal Education and Care, and providing respite for their carers. Our biggest demand is the 4mths to 3 years age group, and both Blaxland and Lawson have waiting lists for these age groups.



BMOCS is currently running from Blaxland on Monday at the Family Day Care building, Wednesday in Lawson at the Mid Mountains Neighbourhood Centre, and Blackheath on Friday from the hall behind Blackheath Baptist Church. We have a long history of using these venues, and BMOCS has a very positive reputation within the community. Running from the Neighbourhood Centre at Lawson enables us to maintain a close relationship with them and their activities.

During the year we have been part of a number of community activities such as visits from Billie Booksie, our Reading mascot for MOCS' early literacy project 'Paint the Blue Re(a)d', a visit from Aunty Jacinta and Aunty Carol during Reconciliation Week, who passed on to the children some of the local Aboriginal lore and stories.

Word of mouth is the biggest and best form of advertising, and we have experienced extended families coming together once a week or sometimes once a fortnight to enjoy positive social interactions with each other and other children.

Parents and children form friendships and networks through their experiences at BMOCS, and it is our intention to provide support and information regarding parenting and children's development to our families. Our close relationship with MOCS and the Community Development team, provide resources and support for parents through training and information sessions. This is advertised in the regular newsletters, and term bulletin published by the MOCS Hub Worker.



At the end of last year Kerry Knibbs resigned as the Coordinator, and Cathryn Ferreira took over this role. Cathryn is an Early Childhood Teacher with a long history in teaching and working in a variety of roles in Early Childhood Services, both in the Blue Mountains and Greater Sydney.

It was lovely to feel the warmth extended by the existing team, and the enthusiasm with which they embraced this change.

Some of the changes included daily timetabling to extend the morning play session before morning tea, better daily feedback to parents regarding care for their baby, particularly nappy changes/ sleep, more comprehensive Child Health and Safety practices especially the development of an Evacuation bag filled with essential items should we evacuate in an emergency. This bag has spare nappies, bottled water, crackers for a snack, a USB with all children's enrolment details so that we can contact families to come and collect their children, a power pack to charge the mobile phone should it go flat will contacting parents etc. BMOCS regularly practices emergency fire drills, and we have also begun practicing Lock down procedures as well.

Our service employs 3 part time Educators. Simone Witherow, Cate Harrison, and Emily McKay all of whom hold Certificate 3 in Children's Services (or equivalent). Cate is currently 'Working Towards' her Diploma in Children's Service by distance education. We also have a core group of reliable and experienced casual staff.

Changes to Early Intervention funding has taken away support funding for children with additional, from all Early Childhood service including non centre based service, and given this exclusively to centre based preschools. This has meant that we can longer employ extra support staff to help integrate and respond to the needs of children with additional needs. This has meant that as a team, we are working harder to still include these children, while continuing to run a quality education and care program for all the children.

Funding for 4 year olds to access 15 hours of preschool care in the year before school, has meant that our biggest demand for places is the 12 mths to 3 1/2 years age group We still remain affordable and flexible, and parents are choosing to send their 3 year olds for 1 day per week, rather than the prescribed 2 days at the local preschool. Some older preschoolers in the 4 year range continue coming to BMOCCS to get extra days of a preschool experience at our affordable 4 year old rate.

Flexibility and negotiation has been the key to keeping enrolment numbers up this year, when parents want 1/2 days, fortnightly permanent spots, casual bookings, and it is always a juggle to keep staff:child ratios correct to meet licensing requirements when demand is high for a certain age group and less for others, while maintaining the high level of education and care that remains the core of our quality service.

The team once again attended the invaluable Mobile Meet in August in Mudgee organised by Mobile Children's Services Association (MCSA) Inservice training.

We have had approximately 100 enrolments this financial year from families that identify our service as their child's first early childhood educational experience. We are active in assisting families with a sensitive transition to care and education. We have been able to support families who needed care for children while they attended cancer treatment, parents working from home to earn an income, providing support to parents that do not have extended family in the immediate area and need respite from their children enabling them to return at the end of the day refreshed, support to older first time Mum's who have been career women and find motherhood a complex role. We have had families use 2 venues, prepared to travel as they found our service and team caring and sensitive to their children's needs, and returned from centre based Long Day Care to our service.

A survey to determine the reasons parents use occasional care was completed by 13 parents in December 2014 and showed the main



reasons for choosing our service are the low cost and convenience of casual bookings with 5 saying our fees 'only just' fit their budget and 1 saying 'not really'; for 12 families it was their child's first structured educational experience; most use the service to attend an appointment followed by doing shopping. Some responses to the question:

What do you like about BMOCS were: "The wonderful caring staff, the convenience, the variety of activities the kids do, cost", and "Very high quality care & convenience."

Cathryn Ferreira

## **MOC\$ Mobile Minders (MMM)**

MMM provides quality low cost childcare to a range of Service Providers within the Blue Mountains. The flexibility and mobility of the service enables us to support parents and carers to access a range of community education groups, meetings, playgroups and community events.

In the past year the dedicated MMM team have continued to provide child care and children's activities throughout the mountains from Blaxland to Mt Victoria in a variety of venues ranging from community halls, parks and schools. Service providers give frequent feedback that they would not be able to achieve the attendance they attract and highlight the valuable contribution that MMM makes to the families of the Blue Mountains. We provided children's activities at Bike Week at Katoomba Skate Park on 20<sup>th</sup> September, Lawson Family Fun morning at Mid Mountains Neighbourhood Centre 30<sup>th</sup> September, Winmalee Fun Day for Bush Fire Recovery at Winmalee High School 18<sup>th</sup> October, Mid Mountains Festival 15<sup>th</sup> November at Mid Mountains Neighbourhood Centre, Fire Information Night at Blaxland High School, *Carols in the Park* in Lawson on 13<sup>th</sup> December and at 12 locations for Meet Your Street with Mid Mountains Neighbourhood Centre.

Throughout this year MMM has provided childcare and children's activities to 13 different community groups and organizations. Session numbers have been varied from term to term. Term 1 saw 105, term 2, 3 and 4 averaged 85 a slight drop in the number of sessions, however some jobs required 2 or 3 workers. The total of sessions attended by MMM workers this year was 358. MMM continues to support BMOCS with additional staff when needed.

MMM provides childcare to many longstanding clients and new organization /services. This year we provided service to Gateway Family Service, Nepean/Blue Mountains Local Health District, Brighter Futures, Enrich, Australian Breast Feeding Association, Connect Child and Family Services, Family Worker Training and Development, Daylight Community Choir, Northcott, Blaxland Public School, Winmalee, Mid Mountains, Katoomba and Blackheath Area Neighbourhood Centres.

MMM continues to maintain around 8-10 staff members, though we have seen some reshuffling of roles. Jane our MMM Facilitator has moved into the temporary role of Hub Coordinator replacing Liz Smith who is on extended leave. Elaine covered MMM Facilitation during 2015. Danielle Wilding-Forbes left us at the end of December 2014 and Tanya Clark stepped in as Acting Playgroup Support Worker. Our casual team of Nadia Ireland, Meg Grunsell, Louise Moar, Sally Weymouth and Jade Pyle welcomed Sarah Rees, Jeannie Elliot, and Hazel Collins to the team and Maria Skoubiev has returned to work for us. With a lot of bookings taking place on Thursday's MMM has been supported by BMOCS workers, Simone Witherow and Cate Harrison taking on extra shifts.

Jade has been working as a temporary support worker on Wednesday's and Thursday's for families attending the Brighter Futures Drop In sessions at Heatherbrae in Lawson and in Term 2,



Sally has been Acting Parenting Young Facilitator while Sophie is doing her Social Work Placement at Katoomba Hospital.

Venue Safety checks continue to be completed on a regular basis as venues change and new venues are used. MMM workers provide a safe environment for the children and families they are working with. MMM workers continue to maintain the correct procedures around sign-in/out and venue safety check forms and all workers continue to monitor any Worker Health Safety issues.

As part of the implementation of the MOCS Reconciliation Action Plan MMM permanent and casual staff and BMOCS staff attended an in-house training session using the *Share Our Pride* on-line education tool and talked about how to make our services more Aboriginal friendly.

Sally, Tanya, Jade and Elaine attended a 2 day training session on Child Protection and Mandatory Reporting and Sally renewed her 1<sup>st</sup> Aid Certificate.

I would like to thank the MMM team for their flexibility and professionalism in supporting children and their families. They continue to receive positive feedback from service providers and families.

Elaine Cameron

## Networks and Partnerships

### **Mental Health & Wellbeing Network**

This year saw the RAMHI (Raising Awareness of Mental Health Issues) interagency undergo a review and re-structure itself as the Mental Health & Wellbeing Network. MOCS has continued to participate in the re-vitalised network and is part of the working group for Mental Health Month activities in October 2015.

### **Mountains Multicultural Interagency (MMI)**

MOCS continues to be a member of this group, but was less active in Interagency projects, due to a clash of meeting times.

### **Blue Mountains Lithgow Integrated Neighbourhood Network (BLINN)**

As part of BLINN we have participated in a series of training events on the Harwood model of community engagement and have resourced a number of Ask in the Street and Community Conversation activities. This is an ongoing project into the 2015-16 year.

The 8 BLINN Managers have met regularly to progress the work of aligning what we do and developing policies and procedures. The BLINN Board of Managers and Chairpersons from the 8 organisations has met quarterly.



### **Stronger Families Alliance**

MOCS is a foundation member of this group is the convenor of the Child Friendly Communities subgroup which leads the implementation of this part of the Child and Family Plan.

MOCS staff attend the Main Group meetings and Lyn attends the Neighbourhood Service Network and Executive meetings. A highlight from this year's participation in the SFA have been the completion of a research project with children in Stage 2 (classes 3 and 4) at Blackheath PS, Hazelbrook PS and East Blaxland PS. SFA has decided to expand its focus to include young people and to concentrate on building resilience and well-being as a preventative against mental health issues in children and young people. As a result the Child and Family Plan will be rewritten over the next 18 months and new organisations have joined the Alliance.

#### **Australian Services Union**

Lyn continues as one of the BM delegates on Social and Community Services Committee of Management as well as on the ASU Executive. Lyn has convened local sub branch meetings during the year and attended the *Community Services Roundtable Forum with Luke Foley and Linda Burney* in Penrith on 23/2. MOCS staff attended the *Save our Local Community Services* rally in Sydney in March 2015.

#### **Disaster and Resilience Working Group**

This was formed as part of the BM response to the devastating bush fires Winmalee and Mt Victoria in 2013. MOCS joined the Group in September 2014 and has received two Flexible Community Grants to work on bushfire preparedness with families with young children. The BM response has been recognised as innovative and an excellent model of collaboration between emergency and community sectors groups.

#### **Blue Mountains Consortium**

This partnership of MOCS with Gateway Family Support, BM Family Support and Connect Child and Family Services is sub-contracted by Wesley to provide the Brighter Futures Program to 30 Blue Mountains families with complex needs where children are at Risk of Significant Harm.

#### **Parenting Young Working Party**

Platform Youth Services, Connect Child and Family Services, Mountains Youth Services Team, Nepean Blue Mountains Local Health District, Wimlah Women's and Children's refuge and Outreach services as part of West Connect Domestic Violence Services partner with MOCS to provide Parenting Young.

# Financial Report

MOCS (Mountains Outreach Community Service Inc) and its projects are funded by NSW Government Department of Family and Community Services, NSW Government Department of Education & Communities and Brighter Futures Early Intervention via Wesley.

MOCS received \$200561.51 and an ERO increase of \$6631.90. Blue Mountains Occasional Childcare Service (BMOCCS) received \$85367, Mountains Mobile Minders (MMM received \$109574, Brighter Futures received \$47383 Wesley funding. We received additional funds of \$2140 from Wesley to train Sophie and Lyn in the new Carelink reporting software. BMOCCS also received \$5040 Access Funding for children with additional needs. This funding allowed us to provide these children with an extra early childhood educator and specialized equipment but funding ceased in December 2014 so we are not able to provide the same level of service, however our professional BMOCCS team does an exemplary job in continuing to support these children and their families.

The Aboriginal Artists in Blue Mountains School project was funded this year by contributions from only two participating schools to the amount of \$400. Another \$500 dollars was received for this project from Blue Mountains City Councilor donations. It operated on a much smaller budget and scale this year. We received \$1500 in community donations from Blue Mountains City Council which was allocated to BMOCCS and Aboriginal Artists in Schools Project.

All of the above funds were fully expended.

We also received \$8397.27 ANZAC Centenary funding from the Department of Veteran's Affairs and spent \$1350. \$2,520 BM Flexible Community Grant and \$24334 BM Bush Fire Grant were received and placed in Grants in Advance to be expended next year along with leftover ANZAC Funds. BMOCCS and MMM received an additional \$2263.28 at the end of June from NSW Department of Education and Communities and this was rolled into next financial year.

Some of our provisions were utilized this year to balance our total current year surplus to \$0.00 rather than record a deficit.

BMOCCS, MMM and Brighter Futures did not receive the CPI funding increase so it is becoming increasingly difficult to cope with all the other rising costs.

Adequate funds have been set aside to cover provisions for Long Service Leave, Annual Leave, and Personal Leave accruals.

I would like to thank William Tomiczek and his team for conducting the audit of our financial records so proficiently and promptly.

Congratulations to our fabulous MOCS team for delivering wonderful service to our community and for pulling together to as a team to cope with all the changes we have experienced this year.

**Elaine Cameron**



# William Tomiczek & Associates

ABN 55 397 353 122

p: 02 4739 2948 m: 0402 097 431 f: 02 4739 2057 e: albion@bigpond.net.au 66 Emu Plains Road Mt Riverview NSW 2774

Registered Company Auditor Registered Tax Agent SMSF Auditor

Liability limited by a scheme approved under Professional Standards Legislation.

## AUDIT CERTIFICATE

### Standard full Audit Certificate by a qualified accountant in respect of Community Funded Organisations

I, William Tomiczek, of 66 Emu Plains Road, Mt Riverview NSW 2774, being a qualified accountant within the meaning of the Community Funded Program, do hereby certify that I have examined the books and financial records of Mountains Outreach Community Service Incorporated.

In my opinion the financial statements present fairly the financial position of the organisation, and the results of its operations for the period ended 30 June 2015 are in accordance with the Australian Accounting Standards.

Signature



William Tomiczek

Date

25.8.15

Auditors Qualification: Registered Company Auditor  
No. 1425

Notes to and forming part of the accounts of for the period ended 30 June 2015.

We have satisfied ourselves that:

- Payments to associated and/or affiliated bodies have been adequately disclosed.
- Establishment of all reserves/provisions is justified and represent funds set aside for LONG SERVICE LEAVE and ANNUAL LEAVE.

Signature



William Tomiczek

Date

25.8.15

## MOUNTAINS OUTREACH COMMUNITY SERVICE INC.

### Committee's Report

For the year ended 30 June 2015

---

Your committee members submit the financial accounts of the MOUNTAINS OUTREACH COMMUNITY SERVICE INC. for the financial year ended 30 June 2015.

### Committee Members

The names of committee members at the date of this report are:

Julianne Abood  
Susan Pearce  
Lyn Pagan  
Susan Ambler  
Loren Hayes-Marshall  
Sandra Hill  
Jillian Salz  
Jacqueline Miller

### Principal Activities

The principal activities of the association during the financial year were: .

### Significant Changes

No significant change in the nature of these activities occurred during the year.

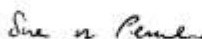
### Operating Result

The profit from ordinary activities after providing for income tax amounted to

Year ended	Year ended
30 June 2015	30 June 2014
\$ 0	\$ 1,283.32

Signed in accordance with a resolution of the Members of the Committee on: The sixteenth day of September, 2015.

  
Julianne Abood

  
Susan Pearce

---

The accompanying notes form part of these financial statements.

Mountains Outreach Community Service Inc

Profit & Loss (Last Year Analysis)

July 2014 through June 2015

	This Year	Last Year
Income		
FACS CB Funding - MOCS	\$200,561.51	\$195,830.85
FACS CB ERO One Off Funding	\$6,631.90	\$3,969.92
BMCC Community Donations	\$2,000.00	\$1,500.00
DEC CS Funding - BMOCCS	\$85,367.04	\$85,367.02
DEC CS Funding- MMM	\$109,574.04	\$109,574.04
Workers Compensation Claim	\$0.00	\$443.31
BMCC Councillor Donations	\$80.00	\$600.00
BMOCCS EC Teacher Funding	\$8,000.00	\$8,000.00
DEC One Off funding	\$0.00	\$5,061.43
Dept of Veteran Affairs	\$1,350.00	\$0.00
DHS-One-Off Transition Funding	\$0.00	\$1,858.59
FundAbility Northcott Funding	\$475.00	\$0.00
Brighter Futures - EI Funding	\$47,382.84	\$47,382.80
BF - Retreat Funding	\$1,224.25	\$1,224.25
BF Care Link	\$2,140.00	\$0.00
BF- MMM Support Worker	\$6,487.32	\$0.00
BF Brokerage	\$4,153.11	\$1,517.70
Aboriginal Artists in Schools	\$400.00	\$4,940.00
ACCESS Funding	\$5,040.00	\$11,294.71
DET Traineeship Funding	\$0.00	\$1,500.00
Bank Interest	\$1,107.69	\$3,316.20
Donations	\$481.00	\$145.70
Elders Lunch Donations	\$2,261.92	\$634.14
Service Management Levy	\$29,339.00	\$23,746.78
Reimburse MOCS Admin Hours	\$0.00	\$1,500.00
Reimburse Worker Costs	\$2,575.00	\$4,740.67
Reimburse Project Expenses	\$11,332.72	\$3,145.64
Contribution to Van Expenses	\$3,500.00	\$3,000.00
MOCS Membership Fees	\$17.00	\$19.00
Photocopying Contributions	\$1,373.86	\$672.00
MMH Contributions	\$589.22	\$508.70
MMM Service Fees	\$9,554.22	\$10,071.26
CBPP - Funding	\$3,150.00	\$0.00
BMOCCS Service fees	\$32,903.50	\$33,491.40
Fundraising	\$843.75	\$547.95
Our Generation Video Sales	\$15.00	\$0.00
Reimbursement of Costs	\$0.00	\$350.00
Total Income	\$579,970.89	\$565,954.06
Cost of Sales		
Gross Profit	\$579,970.89	\$565,954.06
Expenses		
Staff Costs		
Wages & Salaries	\$356,790.60	\$367,589.54
Relief Wages	\$35,608.01	\$31,550.31
Wage and Salary Adjustment	\$1,849.67	\$0.00
Management BF	\$0.00	\$2,256.60
Annual Leave Provision	-\$2,306.90	-\$2,222.15
Personal Leave Provision	\$6,456.55	\$5,099.12
LSL Provision	-\$564.87	\$5,047.53
Staff Training	\$3,696.09	\$1,808.19
First Aid Training	\$100.00	\$222.73
ERO 2013 BF	\$0.00	\$150.92
ERO 2014 BF	\$0.00	\$703.60
Superannuation	\$34,764.93	\$35,481.04
Workers Compensation	\$9,419.94	\$10,242.44
Staff Supervision	\$1,030.00	\$547.27
Administration Expenses		
AGM & Planning Day Costs	\$908.94	\$687.72
Audit Fees	\$2,918.18	\$2,636.36
Bank Charges	\$250.68	\$280.36
BAS Rounding	\$2.80	-\$2.10
Computers & Printers	\$1,802.07	\$1,212.41
Consumables	\$3,050.36	\$3,512.50
Insurance	\$6,549.63	\$7,079.07
Internet access	\$682.37	\$823.12

Mountains Outreach Community Service Inc

Profit & Loss [Last Year Analysis]

July 2014 through June 2015

	This Year	Last Year
Service Management Levy	\$28,180.00	\$20,243.00
Membership & Subscriptions	\$3,864.73	\$1,762.73
Position Advertisements	\$214.54	\$597.46
Postage	\$320.41	\$59.77
Printing & Photocopying	\$2,888.23	\$1,745.59
Publicity	\$1,208.43	\$1,159.98
Publications	\$211.82	\$0.00
Repairs & Maintenance	\$109.09	\$0.00
Stationery & Office Supplies	\$1,228.81	\$1,080.51
Telephone	\$845.22	\$3,757.84
Mobile phone	\$1,912.21	\$1,941.25
Total Administration Expenses	\$57,148.52	\$48,557.57
Program Costs		
Corporate Overheads BF	\$2,790.78	\$3,068.64
Brokerage BF	\$4,153.11	\$1,617.69
Program Costs BF	\$3,349.92	\$3,349.92
Children's Equipment	\$6,442.18	\$5,769.37
Community Development AF	\$0.00	\$1,000.00
Donations to community groups	\$410.00	\$55.00
Mid-Mountains Hub Expenses	\$1,712.50	\$206.53
Craft Materials	\$385.30	\$1,039.67
Guest Speakers/Facilitators	\$3,000.00	\$5,974.91
Website fees	\$523.63	\$0.00
Welcome to Country	\$200.00	\$0.00
Aboriginal Projects	\$1,800.00	\$0.00
Elders Lunch Expenses	\$2,561.92	\$634.14
Equipment	\$1,014.53	\$0.00
Research - Project	\$1,350.00	\$0.00
Repairs	\$0.00	\$250.00
Labour Hire	\$80.00	\$0.00
Rent		
Rent & Expenses	\$18,603.50	\$9,565.62
Venue Hire	\$8,522.27	\$5,935.41
Office Accommodation BF	\$0.00	\$1,159.28
Travel		
Travel	\$4,944.85	\$4,628.79
Travel Expenses	\$203.69	\$87.13
Contribution to Van Expenses	\$3,000.00	\$9,479.36
Capital/Equipment Expenses		
Depreciation of Equipment	\$452.26	\$904.52
Photocopier Rental	\$2,160.00	\$2,260.05
Van Expenses	\$8,297.91	\$750.00
Total Expenses	\$579,970.89	\$564,670.74
Operating Profit	\$0.00	\$1,283.32
Other income		
Other Expenses		
Net Surplus / (Deficit)	\$0.00	\$1,283.32

Mountains Outreach Community Service Inc

Balance Sheet [Last Year Analysis]

June 2015

	This Year	Last Year
<b>Assets</b>		
Current Assets		
Commonwealth Cheque Account	\$22,873.04	\$57,032.53
CBA Business Account	\$122,217.65	\$55,703.24
Fundraising Account	\$1,144.39	\$1,144.39
Debtors	\$6,513.89	\$7,292.11
Petty Cash	\$350.00	\$350.00
Prepayments	\$0.00	\$6,124.91
Term Deposit Leave Provision	\$50,276.57	\$50,233.21
Term Deposit Replace Equipment	\$23,780.77	\$23,089.00
Term Deposit Van	\$19,991.01	\$19,973.76
GST Paid	\$2,739.21	\$2,470.94
Total Current Assets	\$249,886.53	\$223,414.09
Property & Equipment		
Motor Vehicles Special Equip	\$3,820.00	\$3,820.00
Motor Vehicles Accum Dep	-\$3,820.00	-\$3,820.00
Furniture & Fixtures at Cost	\$24,546.03	\$24,546.03
Furniture & Fixtures Accum Dep	-\$24,093.76	-\$23,841.50
Computers & Printers	\$14,532.45	\$14,532.45
Computers & Printers Accum De	-\$14,532.45	-\$14,532.45
Total Property & Equipment	\$452.27	\$804.53
<b>Total Assets</b>	<b>\$250,338.80</b>	<b>\$224,318.62</b>
<b>Liabilities</b>		
Current Liabilities		
Trade Creditors and Accruals	\$600.00	\$0.00
Grants in Advance	\$29,343.61	\$2,140.00
Grants in Advance-BMOCCS	\$0.00	\$8,000.00
BMOCC Capital Grant	\$20,000.00	\$20,000.00
Grants in Advance - DEC	\$9,769.32	\$9,769.32
Provision - Van Replacement	\$7,800.00	\$7,800.00
Provision - Building Maint	\$1,000.00	\$0.00
Provision - Replace Equipment	\$15,374.19	\$15,374.19
Provision - MMH Playgroups	\$1,201.42	\$1,184.00
Provision - Unpaid Venue Hire	\$1,675.00	\$0.00
Provision - PY Retreat	\$4,589.20	\$4,589.20
Provision - MOCS Publications	\$2,705.29	\$1,873.89
Provision - Elders Lunch	\$1,003.55	\$2,091.97
Total Current Liabilities	\$95,061.58	\$72,622.57
Payroll Liabilities		
PAYG Withholding Tax	\$3,199.90	\$3,555.82
GST Collected	\$10,141.19	\$13,071.27
Provision - Long Service Leave	\$23,687.66	\$24,252.53
Provision - Annual Leave	\$29,712.20	\$32,019.10
Provision for Personal Leave	\$54,576.83	\$48,120.28
Superannuation Payable	\$0.00	\$6,338.10
Provision - Staffing Funds	\$16,230.60	\$14,030.93
Union Fees Payable	\$62.00	\$229.20
One Off funds held til next yr	\$9,012.27	\$0.00
Total Payroll Liabilities	\$146,622.65	\$141,617.23
<b>Total Liabilities</b>	<b>\$241,684.23</b>	<b>\$214,439.80</b>
<b>Net Assets</b>	<b>\$8,654.57</b>	<b>\$9,878.82</b>
<b>Equity</b>		
MOCS Equity	\$8,654.57	\$8,595.50
Current Year Surplus/Deficit	\$0.00	\$1,283.32
<b>Total Equity</b>	<b>\$8,654.57</b>	<b>\$9,878.82</b>

## **MOUNTAINS OUTREACH COMMUNITY SERVICE INC.**

### **Notes to the Financial Statements**

**For the year ended 30 June 2015**

---

#### **Note 1: Summary of Significant Accounting Policies**

This financial report is a special purpose financial report prepared in order to satisfy the financial reporting requirements of the Associations Incorporations Act of New South Wales. The committee has determined that the association is not a reporting entity.

The financial report has been prepared on an accruals basis and is based on historical costs and does not take into account changing money values or, except where specifically stated, current valuations of non-current assets.

The following significant accounting policies, which are consistent with the previous period unless otherwise stated, have been adopted in the preparation of this financial report.

**(a) Cash and Cash Equivalents**

Cash and cash equivalents include cash on hand, deposits held at call with banks, and other short-term highly liquid investments with original maturities of three months or less.

**(b) Revenue and Other Income**

Revenue is measured at the fair value of the consideration received or receivable after taking into account any trade discounts and volume rebates allowed. For this purpose, deferred consideration is not discounted to present values when recognising revenue.

Interest revenue is recognised using the effective interest rate method, which for floating rate financial assets is the rate inherent in the instrument. Dividend revenue is recognised when the right to receive a dividend has been established.

Grant and donation income is recognised when the entity obtains control over the funds, which is generally at the time of receipt.

All revenue is stated net of the amount of goods and services tax (GST).

**(c) Goods and Services Tax (GST)**

Revenues, expenses and assets are recognised net of the amount of GST, except where the amount of GST incurred is not recoverable from the Tax Office. In these circumstances, the GST is recognised as part of the cost of acquisition of the asset or as part of an item of the expense. Receivables and payables in the assets and liabilities statement are shown inclusive of GST.

---

**MOUNTAINS OUTREACH COMMUNITY SERVICE INC.**  
**Statement by Members of the Committee**  
**For the year ended 30 June 2015**

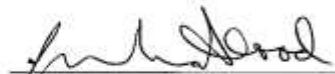
---

The Committee has determined that the association is not a reporting entity and that this special purpose financial report should be prepared in accordance with the accounting policies outlined in Note 1 to the financial statements.

In the opinion of the Committee the Income and Expenditure Statement, Statement of Financial Position, and Notes to the Financial Statements:

1. **Presents fairly the financial position of MOUNTAINS OUTREACH COMMUNITY SERVICE INC. as at 30 June 2015 and its performance for the year ended on that date.**
2. **At the date of this statement, there are reasonable grounds to believe that the association will be able to pay its debts as and when they fall due.**

This statement is made in accordance with a resolution of the Committee and is signed for and on behalf of the Committee by:



Julianne Abood  
President



Susan Pearce  
Treasurer

---

The accompanying notes form part of these financial statements.

**MOUNTAINS OUTREACH COMMUNITY SERVICE INC.**  
**Independent Auditor's Report to the Members**

---

We have audited the accompanying financial report, being a special purpose financial report, of MOUNTAINS OUTREACH COMMUNITY SERVICE INC. (the association), which comprises the Statement by Members of the Committee, Income and Expenditure Statement, Balance Sheet, notes comprising a summary of significant accounting policies and other explanatory notes for the financial year ended 30 June 2015.

**Committee's Responsibility for the Financial Report**

The committee of MOUNTAINS OUTREACH COMMUNITY SERVICE INC. is responsible for the preparation and fair presentation of the financial report, and have determined that the basis of preparation described in Note 1 is appropriate to meet the requirements of the Associations Incorporation Act of New South Wales 2009 and is appropriate to meet the needs of the members. The committee's responsibilities also includes such internal control as the committee determine is necessary to enable the preparation and fair presentation of a financial report that is free from material misstatement, whether due to fraud or error.

**Auditor's Responsibility**

Our responsibility is to express an opinion on the financial report based on our audit. We have conducted our audit in accordance with Australian Auditing Standards. Those Standards require that we comply with relevant ethical requirements relating to audit engagements and plan and perform the audit to obtain reasonable assurance whether the financial report is free from material misstatement.

An audit involves performing procedures to obtain audit evidence about the amounts and disclosures in the financial report. The procedures selected depend on the auditor's judgement, including the assessment of the risks of material misstatement of the financial report, whether due to fraud or error. In making those risk assessments, the auditor considers internal control relevant to the association's preparation and fair presentation of the financial report in order to design audit procedures that are appropriate in the circumstances, but not for the purpose of expressing an opinion on the effectiveness of the association's internal control. An audit also includes evaluating the appropriateness of accounting policies used and the reasonableness of accounting estimates made by the committee, as well as evaluating the overall presentation of the financial report.

We believe that the audit evidence we have obtained is sufficient and appropriate to provide a basis for our audit opinion.

**Opinion**

In our opinion, the financial report presents fairly, in all material respects, the financial position of MOUNTAINS OUTREACH COMMUNITY SERVICE INC. as at 30 June 2015 and its financial performance for the year then ended in accordance with the accounting policies described in Note 1 to the financial statements, and the requirements of the Associations Incorporation Act of New South Wales 2009.

**Basis of Accounting and Restriction on Distribution**

Without modifying our opinion, we draw attention to Note 1 to the financial statements, which describes the basis of accounting. The financial report has been prepared to assist MOUNTAINS OUTREACH COMMUNITY SERVICE INC. to meet the requirements of the Associations Incorporation Act of New South Wales 2009. As a result, the financial report may not be suitable for another purpose.

Signed on 24 August, 2015:

  
William Tomicek F.T.P.A., Registered Company Auditor 1425  
66 Ernu Plains Rd Mt Riverview 2774



## Job Profit and Loss Statements 2014-2015

1	MOCS	
<b>Income</b>		
FACS CB Funding - MOCS	\$200,561.51	
FACS CB ERO One Off Funding	\$6,631.90	
Bank Interest	\$1,107.69	
Elders Lunch Donations	\$2,261.92	
Service Management Levy	\$29,339.00	
Reimburse Worker Costs	\$2,575.00	
Reimburse Project Expenses	\$7,337.47	
Contribution to Van Expenses	\$3,500.00	
MOCS Membership Fees	\$17.00	
Photocopying Contributions	\$1,373.86	
MMH Contributions	\$589.22	
Our Generation Video Sales	\$15.00	
<b>Total Income</b>	<b>\$255,309.57</b>	
<b>Expense</b>		
Wages & Salaries	\$174,530.47	
Wage and Salary Adjustment	\$671.32	
Annual Leave Provision	-\$119.00	
Personal Leave Provision	\$4,976.57	
LSL Provision	-\$64.61	
Staff Training	\$992.45	
Superannuation	\$17,164.24	
Workers Compensation	\$4,533.90	
Staff Supervision	\$140.00	
AGM & Planning Day Costs	\$908.94	
Audit Fees	\$1,445.45	
Bank Charges	\$250.68	
BAS Rounding	\$2.80	
Computers & Printers	\$758.43	
Consumables	\$1,065.80	
Insurance	\$3,658.87	
Internet access	\$682.37	
Membership & Subscriptions	\$2,640.64	
Postage	\$320.41	
Printing & Photocopying	\$1,888.23	
Publicity	\$842.68	
Publications	\$55.57	
Stationery & Office Supplies	\$433.25	
Telephone	\$638.10	
Mobile phone	\$302.86	
Donations to community groups	\$410.00	
Mid-Mountains Hub Expenses	\$1,712.50	
Guest Speakers/Facilitators	\$500.00	
Website fees	\$523.63	
Welcome to Country	\$200.00	
Elders Lunch Expenses	\$2,561.92	
Equipment	\$169.07	
Rent & Expenses	\$17,444.22	
Venue Hire	\$60.00	
Travel	\$1,964.22	
Travel Expenses	\$133.42	
Depreciation of Equipment	\$452.26	
Photocopier Rental	\$2,160.00	
Van Expenses	\$8,297.91	
<b>Total Expense</b>	<b>\$255,309.57</b>	
<b>Net Profit (Loss)</b>	<b>\$0.00</b>	

2	BMOCCS	
<b>Income</b>		
BMCC Community Donations	\$1,000.00	
DEC CS Funding - BMOCCS	\$85,367.04	
BMCC Councillor Donations	\$60.00	
BMOCCS EC Teacher Funding	\$8,000.00	
Donations	\$300.00	
Reimburse Project Expenses	\$2,000.00	
BMOCCS Service fees	\$32,903.50	
Fundraising	\$943.75	
<b>Total Income</b>	<b>\$130,574.29</b>	
<b>Expense</b>		
Wages & Salaries	\$90,522.33	
Annual Leave Provision	-\$3,677.06	
Personal Leave Provision	\$139.65	
LSL Provision	-\$1,353.16	
Staff Training	\$2,563.64	
Superannuation	\$7,441.45	
Workers Compensation	\$2,386.04	
Audit Fees	\$654.55	
Computers & Printers	\$1,043.64	
Consumables	\$1,083.52	
Insurance	\$1,298.94	
Service Management Levy	\$14,364.00	
Membership & Subscriptions	\$865.00	
Position Advertisements	\$214.54	
Printing & Photocopying	\$500.00	
Publicity	\$232.76	
Repairs & Maintenance	\$109.09	
Mobile phone	\$891.90	
Children's Equipment	\$590.30	
Craft Materials	\$203.62	
Equipment	\$845.46	
Venue Hire	\$8,092.27	
Travel Expenses	\$61.81	
Contribution to Van Expenses	\$1,500.00	
<b>Total Expense</b>	<b>\$130,574.29</b>	
<b>Net Profit (Loss)</b>	<b>\$0.00</b>	

ACC15	ACCESS 2014-2015 FUNDING	
<b>Income</b>		
ACCESS Funding	\$5,040.00	
<b>Total Income</b>	<b>\$5,040.00</b>	
<b>Expense</b>		
Relief Wages	\$4,805.75	
Superannuation	\$234.25	
<b>Total Expense</b>	<b>\$5,040.00</b>	
<b>Net Profit (Loss)</b>	<b>\$0.00</b>	

3	MMM	
Income		
DEC CS Funding- MMM	\$109,574.04	
BF- MMM Support Worker	\$6,487.32	
MMM Service Fees	\$9,554.22	
Total Income	<u>\$125,615.58</u>	
Expense		
Wages & Salaries	\$59,710.29	
Relief Wages	\$29,578.01	
Wage and Salary Adjustment	\$1,178.35	
Annual Leave Provision	\$1,340.15	
Personal Leave Provision	-\$620.08	
LSL Provision	\$15.24	
Staff Training	\$140.00	
Superannuation	\$7,163.72	
Workers Compensation	\$2,500.00	
Audit Fees	\$818.18	
Consumables	\$796.04	
Insurance	\$1,591.82	
Service Management Levy	\$13,816.00	
Membership & Subscriptions	\$359.09	
Printing & Photocopying	\$500.00	
Mobile phone	\$356.29	
Children's Equipment	\$3,290.43	
Craft Materials	\$181.68	
Guest Speakers/Facilitators	\$900.00	
Travel	\$500.37	
Contribution to Van Expenses	\$1,500.00	
Total Expense	<u>\$125,615.58</u>	
Net Profit (Loss)	<u>\$0.00</u>	
AASP Aboriginal Art in Schools		
Income		
BMCC Community Donations	\$500.00	
Aboriginal Artists in Schools	\$400.00	
Total Income	<u>\$900.00</u>	
Expense		
Guest Speakers/Facilitators	\$900.00	
Total Expense	<u>\$900.00</u>	
Net Profit (Loss)	<u>\$0.00</u>	
ANZAC ANZAC Centenary Grant		
Income		
Dept of Veteran Affairs	\$1,350.00	
Total Income	<u>\$1,350.00</u>	
Expense		
Research - Project	\$1,350.00	
Total Expense	<u>\$1,350.00</u>	
Net Profit (Loss)	<u>\$0.00</u>	

BF	Brighter Futures-Early In	
Income		
Brighter Futures - EI Funding	\$47,382.84	
Total Income	<u>\$47,382.84</u>	
Expense		
Wages & Salaries	\$29,561.45	
Annual Leave Provision	\$149.01	
Personal Leave Provision	\$1,960.41	
LSL Provision	\$837.66	
First Aid Training	\$100.00	
Superannuation	\$2,781.27	
Staff Supervision	\$890.00	
Stationery & Office Supplies	\$795.56	
Telephone	\$207.12	
Mobile phone	\$361.16	
Corporate Overheads BF	\$2,790.78	
Program Costs BF	\$3,349.92	
Rent & Expenses	\$1,159.28	
Travel	\$2,430.76	
Travel Expenses	\$8.46	
Total Expense	<u>\$47,382.84</u>	
Net Profit (Loss)	<u>\$0.00</u>	
BF Retreat Brighter Futures Retreat		
Income		
BF - Retreat Funding	\$1,224.25	
Total Income	<u>\$1,224.25</u>	
Expense		
Relief Wages	\$1,224.25	
Total Expense	<u>\$1,224.25</u>	
Net Profit (Loss)	<u>\$0.00</u>	
BFB BF Brokerage		
Income		
BF Brokerage	\$4,153.11	
Total Income	<u>\$4,153.11</u>	
Expense		
Brokerage BF	\$4,153.11	
Total Expense	<u>\$4,153.11</u>	
Net Profit (Loss)	<u>\$0.00</u>	
BFCL BF Carelink		
Income		
BF Care Link	\$2,140.00	
Total Income	<u>\$2,140.00</u>	
Expense		
Wages & Salaries	\$2,090.50	
Travel	\$49.50	
Total Expense	<u>\$2,140.00</u>	
Net Profit (Loss)	<u>\$0.00</u>	

CBPP	CB Partnership Project	
Income		
CBPP - Funding		\$3,150.00
Total Income		<u>\$3,150.00</u>
Expense		
Wages & Salaries		\$375.56
Publicity		\$132.99
Children's Equipment		\$2,561.45
Labour Hire		\$80.00
Total Expense		<u>\$3,150.00</u>
Net Profit (Loss)		<u>\$0.00</u>

FAF	Fund Ability Funding	
Income		
FundAbility Northcott Funding		\$475.00
Total Income		<u>\$475.00</u>
Expense		
Consumables		\$105.00
Venue Hire		\$370.00
Total Expense		<u>\$475.00</u>
Net Profit (Loss)		<u>\$0.00</u>

KSS	Koori Songs and Stories	
Income		
BMCC Community Donations		\$500.00
Donations		\$161.00
Reimburse Project Expenses		\$1,995.25
Total Income		<u>\$2,656.25</u>
Expense		
Publications		\$156.25
Guest Speakers/Facilitators		\$700.00
Aboriginal Projects		\$1,800.00
Total Expense		<u>\$2,656.25</u>
Net Profit (Loss)		<u>\$0.00</u>