



Mountains Outreach Community Service



Annual Report 2016-2017

Table of Contents

	Page
About MOCS	1
MOCS Staff and Committee Members	2
Funding Diagram	3
Organisational Structure	4
<u>Reports</u>	
Chairperson	5
Manager	6
Statistics	7
Community Consultation	8
Reconciliation work	10
Work with children and families	14
Parenting Young	18
Paint the Blue Read	19
Blue Mountains Occasional Care	21
MOCS Mobile Minders	23
Networks and Partnerships	24
<u>Financial Documents</u>	26
Independent Audit Report	
Statement of the Management Committee	
Financial Statements	

About MOCS

Mountains Outreach Community Service (MOCS) began as a Western Sydney Area Assistance Scheme (WSAAS) Grant to Springwood Neighbourhood Centre in August 1980 to set-up Treehouse Mobile Resource and Information Unit operating from a bus. Treehouse became autonomous in July 1981 and changed its name to Blue Mountains Mobile in 1986 and then to Mountains Outreach Community Services in 1992. The service has always had a mountain-wide focus on support and provision of services to families with children and on bringing people together to strengthen community connections and resilience. MOCS is community managed and received funding from the NSW Department Family and Community Services, Department of Education, Katoomba RSL and Blue Mountains City Council.

Our projects work across the Blue Mountains in three main areas:

- ◆ Reconciliation and support to the Aboriginal community
- ◆ Work with children and families
- ◆ Networks and partnerships

MOCS VISION is to build a healthy interactive community

- ◆ Where vulnerable and disadvantaged community members are well supported and their resilience and quality of life is improved.
- ◆ Where individuals, families and communities participate in opportunities to build a sense of place, community connection and trust through shared experience, knowledge and strong respectful relationships.

MOCS VALUES:

- ◆ We respect the knowledge, culture and custodianship of the Aboriginal communities of the Blue Mountains.
- ◆ We value diversity, and advocate for social justice, equity and social inclusion.
- ◆ We value strengths based community development practice, personal and community empowerment and choice.

MOCS GOALS are to:

1. Reduce the impact of social and economic disadvantage and reduce social isolation by building social inclusion.
2. Enhance the resilience and connectedness of BM children, their families and communities.
3. Be an agile and robust community organisation.

We are a core member of the Stronger Families Alliance and a member of Blue Mountains and Lithgow Integrated Neighbourhood Network (BLINN) and are part of the Linker Network. We work collaboratively with many different services, groups and individuals to achieve our goals. We use a family work and a community development approach and have a PPP practitioner as part of our team.

Members of MOCS

Staff

MOCS Manager	Lyn Bevington
Financial Administrator	Elaine Cameron
Community Development Worker (including Aboriginal Artists in BM Schools & Paint the Blue Read)	Judith Hawkes
Children's Community Development Worker including Co-ordination of Mid Mountains Community Hub	Liz Smith
Parenting Young Facilitator MMM Worker & Supported Playgroup Assistant	Tanya Clark
BMOCCS Coordinator & Authorised Supervisor	Cathryn Ferreira
MMM Facilitator and Supported Playgroup Facilitator	Jane Marshall

EC Educators	Meg Grunsell	Nadia Cameron
	Simone Witherow	Cate Harrison
	Emily McKay	Jeannie Elliot
	Sarah Rees	Sally Weymouth
	Nelda King	Barby Wylie
	Debra Dunn	Louise Moar
	Juliet Macken	Amy Gaymer
	Mia Gyaneshwar	

Management Committee

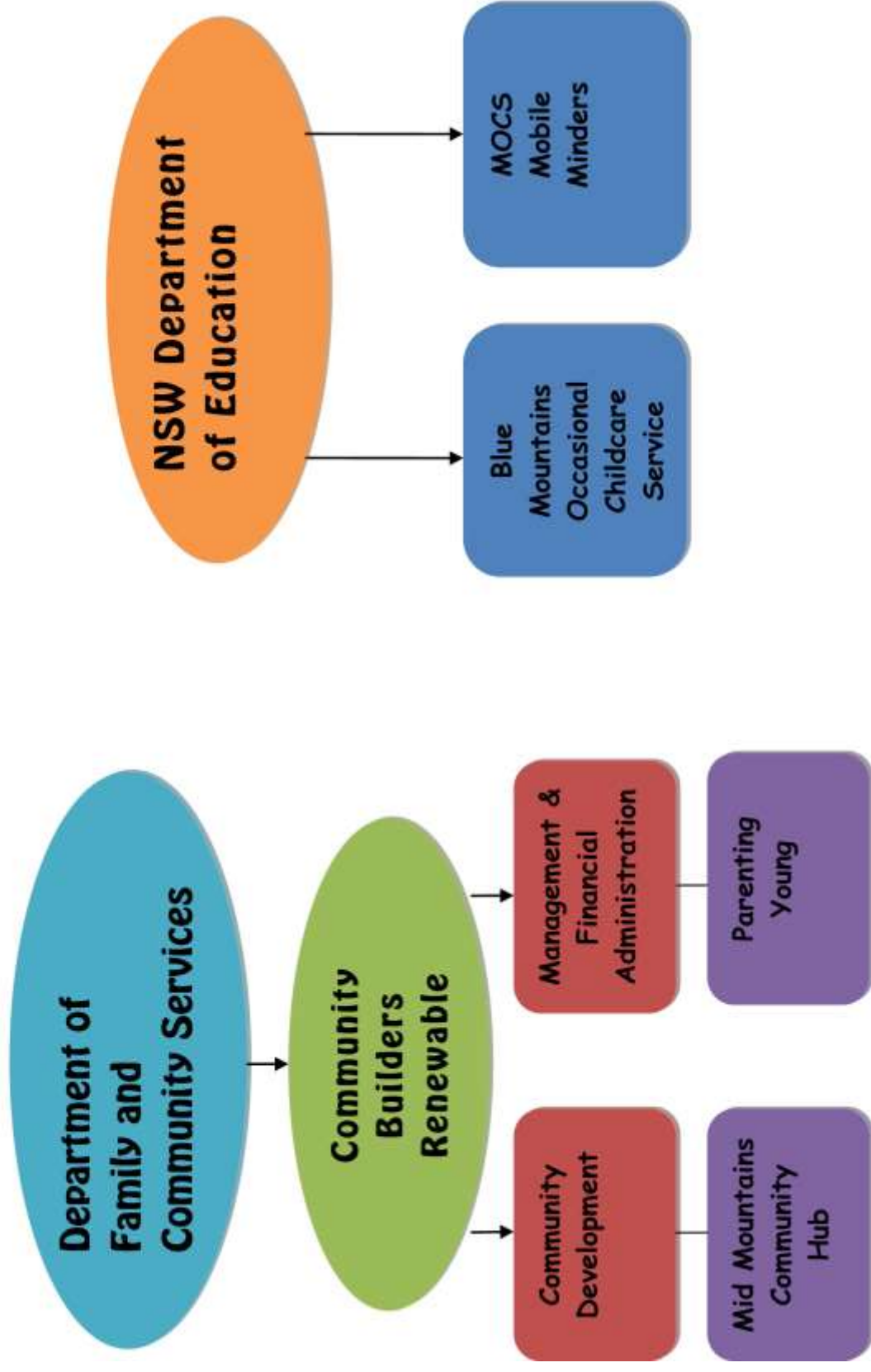
Chairperson	Julianne Abood
Vice Chairperson	Lyn Pagan
Secretary	Susan Ambler
Treasurer	Susan Pearce

Committee Members

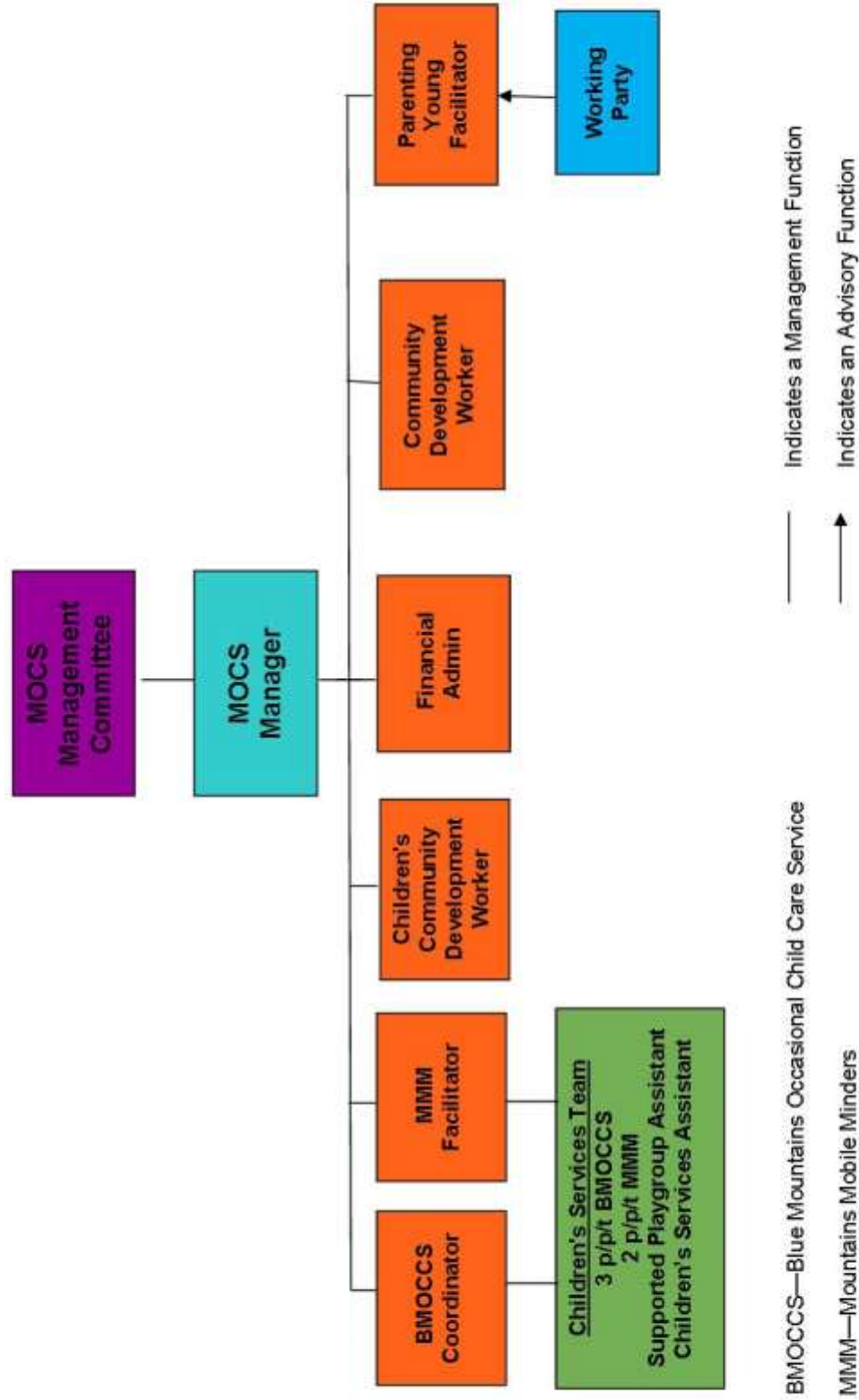
Sandra Hill
Jillian Salz
Prue Adams
Jacqueline Miller
Cheryl Adams

We acknowledge the Darug and Gundungurra people as the Traditional Custodians of the land we live and work on.

Funding Diagram for Mountains Outreach Community Service



Organisational Structure for Mountains Outreach Community Service Inc



Chairperson's Report

As I reflect on my time on the MOCS Management Committee since joining in 2009, and as Chairperson from 2010, I acknowledge with great appreciation the bountiful learning journey that I have had the privilege of experiencing, both on a personal and professional level. It is with regret that I now step down and leave the management committee due to new study commitments. I would like to sincerely thank all the members of the management committee, past and present, and the fabulous MOCS manager and team for the tremendous work achieved continuously year after year. The vast amount of work achieved just this year alone, as showcased in this year's annual report, is a testament to the commitment and efficiency of this dedicated and talented team.

As always the MOCS team have continued to work as a very efficient well-oiled machine and excel in all the work that they do. It makes me very proud to have been involved in this wonderful organisation and to be witness of how well the team works together, how well they work in partnership, and the respect that they receive both as individuals and as part of MOCS from their peers. I also would like to reiterate as I do each year how inspiring and integral Lyn Bevington has been to creating and growing the MOCS story. Her dedication and leadership over the past 24 years have been the bedrock of the organisation, providing stability and continuity as she went about actively consolidating and developing the organisation.

The highlight for me for 2016-2017 was receiving the long awaited announcement from our main funding body confirming funding security until June 2020. After a long period of uncertainty and angst we are all feeling relieved and a lot more relaxed about planning ahead. Another highlight for me this year has been to facilitate the MOCS planning day. This was a wonderful opportunity to work more closely with the team to help develop the strategic plan that will guide their work over the next year and into the future.

Many thanks to all our wonderful Management Committee members for their valuable contributions to our meeting discussions and generous volunteering of time over the course of the year. I would also like to acknowledge with respect and gratitude the outgoing Vice Chair, Lyn Pagan and thank her sincerely for her continued support of MOCS Management Committee since 2010, her sense of humour and the many thoughtful insights she provided in discussing challenging and complex issues.

Thank you to all Blue Mountains community and family service partners who have worked collaboratively and respectfully with MOCS to build a shared vision of a connected, inclusive and healthy community, including Blue Mountains Women's Health and Resource Centre, Gateway, Thrive, BM TAFE Outreach, BM Aboriginal Culture and Resource Centre, BMANTaR, Northcott, Connect, MYST, and all BLINN members.

I wish the MOCS Management Committee and team all the very best for the year ahead as you continue to move ahead with confidence.

Julianne Abood
MOCS Chairperson 2017

Manager's Report

Once again this year has been dominated by the Targeted Earlier Intervention (TEI) Reform process being conducted by Family and Community Services (FaCS). MOCS has contributed to the various consultation processes and been engaged in many meetings. There are 2 funding streams: Community Strengthening and Well-being and Safety of Children, young people & families and the TEI priority groups are children aged 0-3; young parents under 20 years and Aboriginal families and community. All of these are target groups with which we currently work using a community strengthening approach. A FaCS restructure has meant that Nepean Blue Mountains is now merged with Western Sydney and we have a new CPO and Manager. We were sad to farewell Deb Dare who had been our MOCS CPO for many years and we thank her for her consistent support to MOCS and to the BM community sector.

In November 2016 I initiated the process of renegotiating our 2003 Enterprise Agreement (EA). Staff are receiving support from the ASU in the negotiation process and management from Jobs Australia. The process has involved many meetings for both staff and Management Committee and much redrafting of the EA which is still being negotiated.

MOCS continues to be part of the Blue Mountains Lithgow Integrated Neighbourhood Network (BLINN). The BLINN Managers and Community Development workers have met quarterly to plan and develop the Harwood community consultation process together. Our other major focus has been the TEI Reform process and the work of BM/Lithgow Working Group on establishing district priorities.

Staff appraisals in July 2016 showed a high level of satisfaction with team functioning which was very pleasing in this uncertain reform environment. Our Planning Day on 6th September focussed on a review of our target groups and the difference we are trying to make for those groups. We developed a parent feedback form the results of which can be seen in this report.

Our commitment to quality service to families informs our approach to professional development so in February 2017 the Integrated Violence Prevention and Response Service presented *Child Protection and Mandatory Reporting* inservice to 16 MOCS staff and included going through our updated Child Protection policy. Professional development attended by staff: *Leadership and Governance Summit; Adaptive leadership training; NDIS and what it means for mainstream services; How to evaluate your programs using RBA principles; Aboriginal Cultural awareness; Traditional Indigenous Games; Good Enough Parenting; Talking to parents about the hard stuff; Attachment theory and practice; Mobile Meet.*

MOCS staff have continued their quality work with families and with the Aboriginal community. We have worked closely with the Aboriginal Culture and Resource Centre and the Aboriginal Education Consultative Group. Please read about the Elders Lunch, Koori playgroup, Indigenous PPP, Aboriginal fun days & other activities in this report. I commend Liz Smith, Judith Hawkes and Sally Weymouth for their terrific work in this area. At our 2016 AGM we featured *Get Down and Darug* and Auntie Jacinta Tobin and sold lots of copies of this valuable resource. Also read about the great work Tanya Clark and Sally are doing at Parenting Young with our Working Party partners. Tanya and Jane Marshall do a terrific job engaging and supporting families at our supported playgroups. Cathryn and her team continue to provide quality early education and care to the many families who attend BMOCCS. Elaine Cameron keeps the office going and her financial skills are much appreciated.

The Management Committee have continued to provide great support to me as a Manager and participated in Work Health Safety audits and annual staff appraisals. I appreciate their commitment to our service in these reform times and in the arduous process of renegotiating the EA. I also thank Julianne Abood for her role in BLINN Board meetings.

Lyn Bevington



Statistics

Community Builders Statistics:

Events held	21 attended by 802 adults and children	Twice amount required
Resources developed	26 which reached 7,210 people	Twice number of people required
Workshops run	26 attended by 343 people	Twice number of workshops
Community consulted	61 people	As required
Services coordinated	165 sessions	153 required
People connected with information	Average number of times information was given per month: 4,324	1,200 required
Assisted referrals	Average of 2 per month	5 required
Your Say surveys	230 distributed	170 completed

BM Occasional Child Care Service (BMOCCS) statistics:

102 children were enrolled in BMOCCS. There were a total of 1,484 attendances across the 3 venues. There was a large drop in attendances at Blaxland at the beginning of 2017 due to a large number of children leaving to start school.

Cultural Background: 8% identified as Aboriginal and Torres Strait Islanders (ATSI) and 6% identified as Culturally and Linguistically Diverse (CALD).

Ages: 90% of the children were aged 0-3 years at the time of enrolment and 10% were aged 4-5 years.

Family structure: 90% identified as two parent families, 7% as separated and 3% as sole parents.

Supported Playgroups Statistics: Term 1 and Term 2 2017

Hazelbrook locations: 122 parents and 169 children enrolled with a total of 474 attendances across the 2 terms. 31% of these families attending lived in Hazelbrook.

Cultural Background: 1 ATSI; 1 CALD

Ages: 80% aged 0-3; 20% aged 4-5 years

Family Structure: 1% parents aged under 25 years; 92% two parent families; 7% sole parent families,

Transition to School: Lawson Public School in term 4 2016, ran for 4 weeks

11 parents and 19 children enrolled. Total attendance 36. 10 children were starting school in 2017. 6 families lived within the school catchment and 5 families were out of area.

Parenting Young: 15 families enrolled with a total of 410 attendances across the 4 terms.

Cultural Background: 2 ATSI; 0 CALD

Ages: 9 families had children aged 0-3; 6 families had a child aged 4-5 years. Some families have more than one child

Family Structure: 100% parents aged under 25; 70% two parent families and 30% sole parent families

MMM Statistics: 2016—2017 from attendance sheets

910 child attendances with attendance relatively uniform across the 3 terms. A slight dip in Term 4

Cultural Background: 7 % ATSI; 0 CALD

Ages: 68% aged 0-3, 32% aged 4-5 years. 2% identified as having special needs including ADHD

Community Consultations

Parenting Young Community Conversation Feedback – March 2017

In the 2016 Community Conversation with Parenting Young it emerged that the young parents felt judged and stigmatised by the general community, and wanted to feel more accepted. They felt that young fathers were particularly left out of services and programs. A feedback session was held in early 2017 and from this second conversation the young parents, all women, came up with some practical ideas to address some of these issues. One was an immediate creation of a Face Book group specifically for young dads. The young women invited their partners to join it and to invite other young dads.

Another initiative they came up with was to hold a Parenting Young stall at Lawson school markets to raise awareness about the group for other young parents and to be visible to the general community. The aim was to also raise some funds to hold a special open event as a way of further publicising the group and drawing more young parents to it. The stall was held on 18th June.

The open day event with special activities is going ahead in September 2017 and is being promoted widely with the hope of recruiting new members to Parenting Young. The young parents want others like themselves to benefit from becoming part of the group.

A further outcome from the community conversation is that, using the feedback and information from the young parents, MOCS, with the group's agreement, applied for a 2017 Youth Opportunities Program grant. The proposal is to use a documentary photographer to create positive, engaging images of young parents in their parenting roles and showcase their strengths and commitment to being good parents.

Community Conversation with RRR group – November 2016

Four women attending the Re-cycle, Re-Design, Re-create course took part in a Community Conversation in November 2016. What emerged was that they valued a connected, considerate and supportive community in which people are informed about what is going on. They felt that it was important to be able to find out about community activities and supports, to have a level of trust in the neighbourhood and be around likeminded people e.g. other sole parents.

Affordable childcare for regular 'Adult time' and a break was an issue as was community access to computers with internet. They stressed the need for a variety of community support options – in some areas many are religious based which was not always suitable to them. Better public transport in terms of frequency and access to train stations was needed and better communication of supports and activities perhaps via libraries – as they are a trusted source of information. The group particularly highlighted Leura as a community that doesn't have supports, services or adequate information about things going on.

Lawson Skate Park BBQ and Consultation – March 2017

This was held in partnership with MMNC, the Hazelbrook Association and MYST. Fifteen young people attended the consultation asking for their input on the design to be painted by Street Art Murals Australia (SAMA) on the Skate Park walls. The young people enjoyed the free after school BBQ, were excited that art works were planned for their skate park and made some suggestions about what they would like included. It was generally a great opportunity to socialise with the young people, get to know more about what was important to them and for them to appreciate that older people in the community valued and were interested in them and their activities.

ASK consultation at Scout Hall Playgroup, 25 Aug 2016 and Golden Horizons Playgroup, 9 Sep 2016

17 parents/carers participated. People want a safe, connected, supportive community and recognised that this is important for raising children. They spoke about the importance of an inclusive, open and varied community. They are concerned that events aren't promoted enough and that people need to be more informed and engaged. People specifically spoke about more cultural social events in evenings and on weekends, better outdoor spaces and playgrounds and that dads need to be engaged more. They suggested more (low cost) activities for older children and youth.

Summary of Feedback from parents at BMOCCS November 2016

Completed by a total of 30 of the 43 families attending across 3 venues, that is 69%.

100% strongly agree/agree that BMOCCS is welcoming and inclusive

90% strongly agree/agree that by attending they feel more part of the local community

76% strongly agree/agree BMOCCS enabled them to form new friendships/support networks

86% strongly agree/agree they were given information about services/groups that was helpful

94% strongly agree/agree when they had questions or needed support it was available

100% would recommend the service to a friend

Themes from what parents value about the service	No. naming this completed by 28 out of 29
Staff: friendly, warm, competent, trustworthy, kind, gentle, caring	23
Accessibility: times, location, casual and affordability	14
Varied, creative program	5
Friendships and socialisation for my child	5
Support, access to other activities	5
Informal nature which makes it a good introduction to childcare	2

Comments from parents:

Personal interaction, adherence to WHS standards, great feedback from staff; creative play ideas and variation of themes; preschool-like program, age range of children, amazing teachers who enjoy their work.

We love this service, it is affordable and very high quality

It's a nice ChildCare and my daughter is always happy after attending

Been using this service for 6 years, Can't fault it other than not enough hours and days.

It's a Valuable service that needs support from the local community and funding bodies

I am grateful for this service. It has really helped me and my family.

Summary of Feedback from parents at HUB Playgroups December 2016

Completed by 12 of the 21 families attending, across 2 groups, that is 57%.

100% strongly agree/agree that playgroup is welcoming and inclusive

92% strongly agree/agree that by attending they feel more part of the local community

92% strongly agree/agree playgroup enabled them to form new friendships/support networks

83% strongly agree/agree they were given information about services/groups that was helpful

100% strongly agree/agree when they had questions or needed support it was available

100% would recommend the service to a friend

Reconciliation Work & Support to the Aboriginal Community

For over 20 years MOCS has supported the reconciliation process in the Blue Mountains and has worked closely with local Aboriginal and Torres Strait Islander residents including Darug and Gundungurra people on many projects and issues. We believe that many small steps across multiple platforms is how sustainable attitudinal change is built. This year we have worked on:

Indigenous Triple P:

In partnership with Raylee Wall from ACRC, Liz Smith co-facilitated a 5 week Indigenous Positive Parenting Program course in May/June 2017 in Katoomba. Four parents attended with only one completing the 5 sessions. However this one parent really wanted and appreciated the course with the facilitators able to adapt the sessions to suit this parent's needs.

Working with Aboriginal Culture and Resource Centre: Koori playgroup and Family Fun Days

Liz Smith and Judith Hawkes supported two ACRC Fun Days, one in October 2016 and the other in April 2017, they provided kids craft, play activities and general help and interaction on the days. Liz and Judith also participated in an ACRC Outreach Day in May 2017 where they provided a MOCS information stall, kids' play activities, networked with other services offering ATSI programs and interacted with Aboriginal families and workers who attended.

Learning from Culture

Liz and Judith organised an open day in partnership with the Woodford Academy volunteers for Children's Week 2016. The theme was to showcase the Academy, share local Aboriginal culture and provide an understanding of late 19th and early 20th century school culture at the Academy. Aunty Jacinta Tobin provided music and Wagana Dancers performed. Ken Goodlet did re-enactments of a typical school class from the early days of the Academy. 14 adults and 12 children attended.

Lawson Public School Bush Tucker Afternoon Tea

As a result of Aboriginal Education Consultative Group (AECG) connections, Judith provided children's activities for this school event, so that parents and teachers could talk uninterrupted about issues relating to their children's schooling. Attendance was significantly higher than the school's previous attempts to make connections with Aboriginal parents. We will look to repeating this model in the future.

Close the Gap Day at Hazelbrook Scout Hall Playgroup

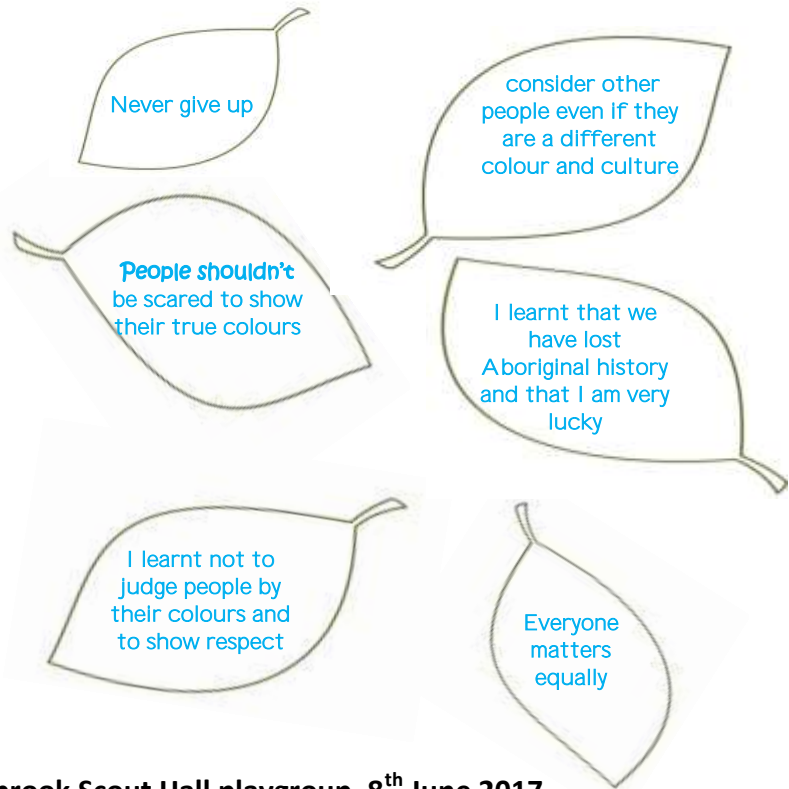
On 16 March 2017 to mark Close the Gap Day, Darug elder Aunty Jacinta Tobin visited to share songs in language and traditional stories with the children. Families from the Koori playgroup in Katoomba were invited to join us for the event. Despite heavy rain a total of 44 people attended: 5 Aboriginal parents (including one dad and one grandmother); 8 Aboriginal children; 10 Hazelbrook parents; 13 Hazelbrook children; 3 Aboriginal workers and 4 MOCS staff to support the activities and interaction. Children's ages ranged from 10 months to 4 years. All the children engaged with the songs and the 3-4 year olds were captivated by the stories. A rhymes booklet was distributed to all the families with one of the songs that was sung at playgroup - Heads, Shoulders, Knees and Toes - in English, Darug and Gundungurra. A good time was had by all.

Best summed
up by one of the
4 year olds:

It
was
cool

Hazelbrook PS Journey of Healing

MOCS obtained a grant from the Healing Foundation to mark the Bringing Them Home 20th anniversary. The funds were used to provide an activity at Hazelbrook Public School where Aunty Carol Cooper and Aunty Bev Eaton shared their personal stories with Year 6 students and teachers. The students listened attentively, asked questions and shared their own family stories. Students recorded what they had learnt on paper 'leaves' which the teachers will mount into a collage to be displayed at this years' Elders Lunch in October.



Reconciliation Week event at Hazelbrook Scout Hall playgroup, 8th June 2017

Uncle Ed Walker was our guest artist and Aunty Carol welcomed everyone to the event. 15 families attended plus 5 members of BM People for Reconciliation. The children loved painting the wooden animals Uncle Ed brought along and lots of parents chatted to Aunty Carol and Uncle Ed.

BM People for Reconciliation/BM Australians for Native Title and Reconciliation:

Lyn continues to convene the monthly meetings of this active and committed group and to support the group's work in the Blue Mountains. On 9th July members of the group taught finger knitting and helped at the MOCS stall at *NAIDOC Family Fun Day in the Gully* and on 7th January the group supported the NSW Reconciliation *Schools Challenge Travelling exhibition Opening* at Woodford Academy where the winning works, including some from BM schools, were displayed. The annual *mirror flash across Gundungurra country* was held on 8th April and once again the Issac's generously allowed use of their Leura verandah, where we had a great view of the flash from Gibbergunyah. Lyn attended the NSW Reconciliation Council Conference on 11th May where it was great to connect with other Local Reconciliation groups and hear about their work and also the work of Recognise. On 21st May members of the group travelled to Mittagong at the invitation of the Wingecarribee Reconciliation group and participated in their *Yarn Up* event as well as visiting Gibbergunyah.

MOCS Reconciliation Action Plan:

Charlotte Lloyd, PhD candidate, Harvard University and Visiting Fellow, Western Sydney University chose MOCS as a small community organisation with a RAP. She is researching the history and implementation of *Reconciliation Action Plans in Australian Organisations* including the variation in RAPs across organisations of different sizes and in different sectors, and the lived experiences of individuals in RAP organisations. In order to study the individual impacts of RAPs, she conducted close case studies of three organisations—one corporate, one government, and one community—that are active in the RAP program. Charlotte visited MOCS on a number of occasions and interviewed MOCS staff, members of the Aboriginal community and BM People for Reconciliation members as part of her research.

As part of our commitment to Aboriginal enterprise we featured Aunty Jacinta Tobin and the Darug language and songs teaching resource *Get Down and Darug* at our AGM on 26th October 2016. It was attended by 40 people and many of the early childhood services attending purchased copies of this teaching resource from Aunty Jacinta.



Commemorating WWI Aboriginal Diggers project:

In partnership with BM People for Reconciliation MOCS received ANZAC Centenary Grant funding from Dept of Veterans Affairs for *Commemorating Aboriginal Diggers from Macquarie electorate*. On 11th November at Katoomba library we launched the second exhibition in this project featuring information on the WWI service of 11 descendants of Maria (daughter of renowned Darug elder, Yarramundi) and Robert Lock. We also launched the project website <http://www.aboriginaldiggersWW1.com>. Research has been conducted by Margo Daly, Barbara Lumley, Sheila Quonoey, Jillian and Ron Salz. The Launch was attended by 40 people including 5 descendants of Jerome Locke and his son Olga Cecil Locke who both served in WWI. Michelle, great granddaughter of Olga Cecil spoke about the significance of the event for their family. On 22nd November the exhibition was moved to Springwood library until 2nd December. The final exhibition in this project was held at Hawkesbury library, Windsor from 26th April till 9th May where we featured all 14 Aboriginal Diggers found in our research. We launched the 44 page book on the project which features beautiful cover artwork by Leanne Tobin. 150 copies of this book have been printed and are being distributed to Aboriginal community members, libraries and schools in the Blue Mountains and Hawkesbury LGA's. Four Aboriginal community members who have connections to the Lock family attended after seeing the article in the Hawkesbury Gazette plus some teachers from local schools. The display looked terrific and the librarian informed us there had been a lot of interest in it. The final action of the project was to frame eight photos on WWI Diggers and present these to BM District Anzac memorial Hospital as part of their NAIDOC ceremony on 10th July 2017. They will then be part of their permanent display in the main corridor.

'This year marks 100 years since Jerome and Olga Locke enlisted in the Australian Imperial forces. My great grandfather and his father went to war to defend the rights of people, who at the time did not consider them as Australian. That is why this exhibition is so important to my family, In honouring these men, you identify and acknowledge us. My mum, aunties, siblings, children, myself and most importantly my grandmother, Olga Cecil Lockes' only child'

Ngarra Wingarru Aboriginal Education Consultative Group (AECG)

Judith is an associate member and regular attender of the AECG. This year has seen a growth in attendance, with most schools sending a representative to meetings on a regular basis. Judith supports the group with activities such as preparing a flyer to promote the AECG to Aboriginal parents. In May, MOCS partnered with the AECG to hold a Cultural Forum for teachers. Held at Mid Mountains Community Centre on a Friday afternoon, over 60 people squeezed themselves into the Grace Tooth Dining Room to share food and drink with Elders and community leaders and to learn about local Darug and Gundungurra culture. The event was a resounding success, with everyone calling for events such as this on a more regular basis.

Indigenous Literacy Day

To mark Indigenous Literacy Day on 7 September 2016, and promote awareness about the Indigenous Literacy Foundation, Billy Booksie organised Book Swaps at Golden Horizons playgroup (6 Sep), Heatherbrae (7 Sep) and Parenting Young (9 Sep).

Aboriginal Artists in Blue Mountains Schools

A change in dates for the state-wide Schools Reconciliation Challenge run by the NSW Reconciliation Council meant that this project ran in Term 3 2017, not Term 1 as in previous years. As a result, this project will be reported on in next year's Annual Report.

Elders Lunch 2016

135 Aboriginal and non-Aboriginal Elders attended the 19th Annual Elders Lunch at Mid Mountains Community Centre on Wednesday 19 October 2016. It was a perfect spring day and the Elders enjoyed browsing at the information stalls by Fair Trading, Aboriginal Healthy 4 Life, Ability Links and the Pop-Up Library in the courtyard, before taking their seats for lunch entertainment which was provided by favourites Col Hardy and the Lawson School Choir, with the BMOCCS children providing a surprise song and dance performance in the courtyard as Elders left at the end of the day. Donations were gratefully received from BMCC Councillors and Bendigo Bank and a team of student leaders from Katoomba High School assisted with setting up, decorating the hall, serving lunch, packing and distributing gift bags and packing up at the end of the day. This year the Lunch included a formal evaluation by the Elders. 83 responses were received (61% of all attending). Of these, 60 (72% of those responding) had attended the Lunch in previous years. Those who were attending the Lunch for the first time all said they'd be back next year. Overwhelmingly the feedback was that people enjoyed themselves, are happy with how the Event runs and look forward to the Lunch each year. The Elders Lunch is one of very few events that acknowledge elders in our community, regardless of whether they are Aboriginal or not.



‘thank you for such a lovely lunch time event. It was great to see the involvement of the school



‘Could not have been better’

‘a very enjoyable day. I must say the students that helped out on the day were very pleasant and friendly. A highlight being when they took to the dance floor with our Elders’



‘thank you for giving us a chance to meet people, get lots of hugs we all need , exchange memories and join in the singing’



Wagana:

MOCS continues in the role of auspice to Wagana Dancers. It is wonderful to see the contribution that Wagana makes to our local and international community.

Reconciliation Promotion:

MOCS has maintained its Facebook presence on issues related to Aboriginal Reconciliation (<https://www.facebook.com/BlueMountainsReconciliation?ref=hl>). The page promotes our events and others in the community that relate to reconciliation, or that are sent to us to share relating to Aboriginal services and events. Our publications *Aunty Joan Cooper: through the front door*, *Fun and Games in Gundungurra* and *Sing You Brave People* continue to sell steadily both within the Blue Mountains and from orders outside the LGA.

Work with Children and Families

This is the core of what MOCS does across the Blue Mountains as a universal service for all families and also targeted at specific disadvantaged groups.

MOCS Community Hub

The MOCS Hub works with other community services and groups to provide programs for families in the Mid Mountains. Those services include Lawson Public School, Hazelbrook Public School, Lawson Community Preschool, Family Day Care, Connect Child and Family Services, Mid Mountains Neighbourhood Centre, Gateway Family Services, Blue Mountains Women's Health & Resource Centre, Thrive and Northcott. The MOCS Hub is a universal program: by providing activities and programs for all families we aim to reach vulnerable families as well.

Hub Parenting Programs

Strong Willed and Sensitive Child in partnership with Gateway Family Services was held at Lawson Public School over 3 weeks in August 2016. 8 parents attended the course with 5 completing; the feedback was extremely positive.

Cyber Safety information session for parents and carers was held in September 2016 in the evening at Lawson Public School and was presented by the Office of the Children's esafety Commissioner. 12 parents attended and all families reported that they had learnt more about cyber safety to help them with their children's needs.

123 Magic in partnership with Gateway Family Services was held over 3 weeks in November 2016 in the evening at Lawson Community Preschool. 11 parents attended with 7 completing the course. It was well received with parents wanting the course to be longer.

Mindfulness for mothers with young children in partnership with the Blue Mountains Women's Health and Resource Centre was held over 5 weeks in February and March 2017 in Katoomba. 12 women attended the course with 10 completing. It was well received with all women who completed reporting a positive contribution to their well-being from the course.

Positive Parenting Program (TripleP)

in partnership with Thrive was held over 5 weeks in February and March of 2017 in Katoomba. 9 parents and carers attended with 8 completing the course. All those who completed found the course highly beneficial with all reporting that it had helped them to deal more effectively with their child's behaviour. Some of the parents made friendships and planned to meet up after the course finished.

'PPP was excellent'

'good program'

'very well presented'

'felt very supported through the program'

The discussions that developed within the group were amazing'

'It has been a really useful and positive experience'

'very supportive environment'

Floundering to Flourishing a one day workshop about building resilience in children was held in May 2017 in partnership with Gateway Family Services at Lawson Public School. 7 parents attended and they all found it helpful.

TAFE Outreach and other activities:

The adult bush walking group is still going strong with a small dedicated group who meet each Wednesday of term. Now in its 4th year!

Two ***TAFE First Aid Courses*** were held at the Bungarrabee Centre; 1 in July/August 2016 and the other in May 2017. These continue to be very popular with 9 people completing each of the courses to obtain a First Aid Certificate.

We also ran the TAFE **Triple R: Re-use, Re-create; Re-design Course** again from July to September in 2016 that was attended by 13 women. Several of these women were keen to keep meeting to pursue their creative interests in a group setting with childcare; MOCS was able to facilitate this and they met weekly term 4 of 2016 and terms 1 and 2 of 2017. The women really value continuing to meet and have formed supportive friendships.

Young Women's Self Defence was held at Katoomba High over 6 weeks in October – November 2016 in partnership with Blue Mountains Women's Health and Resource Centre. 12 women, including high school students and some older women, attended the course. All of those who completed the course reported that they felt more confident as a result of participating in the group with most saying that they would be able to use the self defence techniques they had learned.

Sole Parent Connections an initiative to link up sole parents with each other continues

Hub Family Fun Activities and Holiday Fun Days

Two holiday fun mornings were held in partnership with Mid Mountains Neighbourhood Centre: one in Bullaburra on 6th October 2016 which was also a Bush Fire Preparedness information and advice day. 33 adults and 47 children enjoyed the pop-up-library, climbing on the fire truck, face painting and interactive story-telling.

The other was in Woodford on 20th April 2017, 34 adults and 60 children enjoyed a morning of ball games, craft, face painting and experimenting with Cyano-type printmaking. These fun mornings continue to be important for the community as a place where families can meet up and enjoy themselves in the school holidays for no cost.

MOCS was successful in obtaining Grandparents Week funding and held an afternoon tea in October 2016. It was about celebrating the skills of grandparents and we had four local grandparents, including an Aboriginal Elder, who ran activities with the 13 adults and 11 children who came along. They enjoyed making kitchen gardens in a pot to take home; learning how to finger knit; pikelet making and eating; and painting wooden toys with Uncle Ed.

Judith and Liz provided children's activities at the Mid Mountains Festival on the 19th November 2016 together with Connect Children's Services. The activities were playdough, making pompoms and badge making – all of which were very popular. Approximately 100 children came through during the morning.

'We really value this time together, to create and chat in peace while our kids are minded—it keeps me sane'

'I like the girl vibe, like girl power, feel more confident around just girls'



Making a mini take home kitchen Garden



Kids painting wooden toys with Uncle Ed

'that was so much fun, when are we doing it again?'



Fun with finger knitting

Disability Inclusion

A *Build-A-Mind Lego Robot* inclusive workshop was held in Lawson in April 2017. 8 children participated, 1 of which had a special need. This child does not usually enjoy big community events so his mother was very pleased that this activity was suitable for him. Liz also supported a *Sensory Fun Day* put on by Northcott Services for families with children with a disability and their siblings in Lawson in July 2016.

In the second half of 2016, in partnership with Northcott, Liz started an *NDIS Peer Support Group* to meet once per term. It is open to families who have a child on the NDIS and adults who are part of the NDIS themselves and their carers. The group of seven meet twice in 2016 in September and November to informally discuss experiences and issues. The group decided to hold *NDIS Information Forums* with guest speakers. The first forum was held in May 2017 with a speaker from Disability Advocacy. This attracted 16 people, mostly on the NDIS but also some workers and local MP staff members. It was a great success with participants getting valuable information on the processes to follow if you are having problems with your NDIS plans. The forums will be ongoing.

Heatherbrae Q & A sessions

Liz has continued to organise and support Jenny Rankine, a parent educator, to provide informal parent 'Question and Answer' sessions at Heatherbrae. This is a partnership project with Connect Child & Family Services. Eight 'Q & A' sessions have been held over the past year, 2 per term, with 4-8 parents or carers coming to each one. The families appreciate the one on one parenting advice from Jenny.

Supported Playgroups:

The Mid Mountains Hub playgroups run weekly during school terms at Golden Horizons Park (Tuesdays) and Hazelbrook Scout Hall (Thursdays) and are facilitated by Jane Marshall and Tanya Clark.

Our playgroups had an attendance of over 100 families. 80% of these families had children aged between 0-3 yrs. Families comment on the welcoming nature of our playgroups and continue to attend and make new connections in the community.

This year saw the Transition to School playgroup run again at Lawson Public school in term 4, which followed on from the schools orientation process. 15 children attended over the 4 week program to help in preparing the families for school in 2017.



'my child made new friends and I formed new friendships as well'

'Amazing place for my child to grow and play'

'we love this playgroup, the kids can run and run and run'

At the Scout Hall playgroup this year we participated in Get Ready, Blue Mountains by holding a Family preparedness morning with the RFS visiting in their fire truck. The children got to get up close to the truck and use the hoses. RFS members advised families around being prepared for the upcoming fire season.

‘the chance for my
child and myself to
make new friends’



Reading week in June 2017, saw the Scout Hall playgroup as a main hub of activity in Hazelbrook, Billy Booksie was in attendance and 23 adults and 30 children participated in a Sing and Grow session in stories, rhymes and play.

We have continued to integrate the principles of the Early Years Learning Framework into our program and regularly seek feedback from parents and children about playgroup.



Parenting Young

This year at PY has been another busy one. We have been visiting Heatherbrae once a term and Jeanette Crawford has told me a few of the mothers and children have visited on other occasions.

For an end of year excursion, the Parenting Young parents all met up at Kids Kingdom in Katoomba for a change of scenery and we supplied transport for some of the parents. We participated in *Type Onesie Day* as 2 families have members with diabetes. Some parents and children dressed in their cosy onesies. We had Suzan from Road Safety come and discuss helmets, the importance of car seats and other road safety issues.

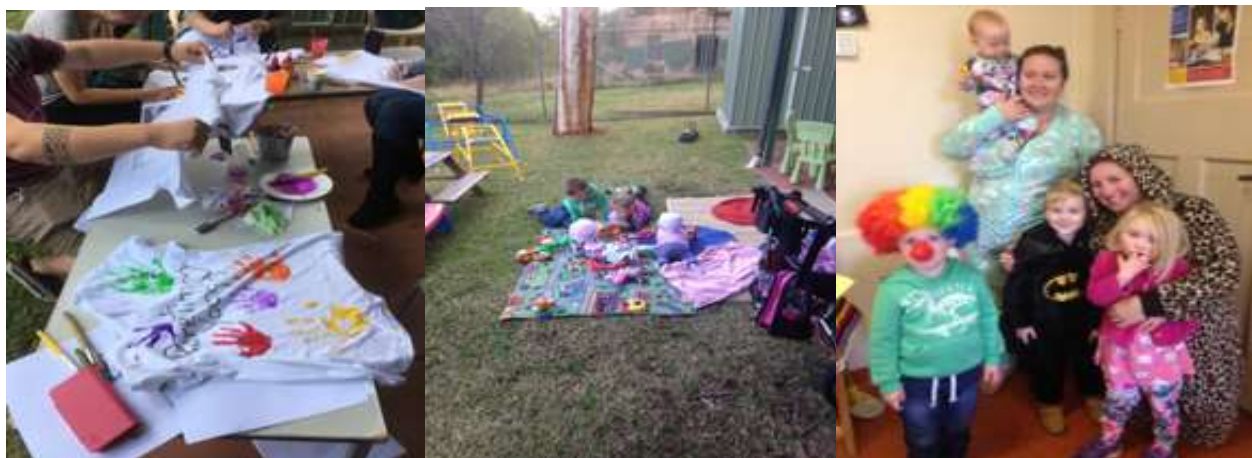
Billy Booksie came for a visit with the *Great Book Swap* day, where the parents all brought in some lovely books for the Aboriginal families. We have been talking about healthy eating and quick and easy snacks to make with the children and making hummus, veggie fritters and date balls at the group. These recipes went into a recipe book which the whole of MOCS put together for the families.

Sally from MMM has brought along many craft activities for the children with playdough being the most popular, in the warmer months we have made slime and coloured spaghetti for textural play which the children thoroughly enjoyed.

Parenting Young continues to be a warm and inviting place for young parents to meet and support each other. We have had a number of services visit the group including Headspace, the Pop up library, Erica Want from Blue Mountains Women's Health and Resource Centre comes once a term. Erica has discussed children and their emotions, meditation and there have been many other discussions. The families who attend the group have also accessed the support and expertise of working party members who come to the group on a regular basis. We have received feedback from young parents that meeting workers face to face at the group is really helpful for them. While they may have heard of a service before it is not until they get a chance to speak directly with one of the workers that they really appreciate what the service does and how it could be helpful in their situation.

The Parenting Young Working Party includes workers from Mountains Youth Services Team, Glue, Platform Youth Services, Nepean Blue Mountains Local Health District and Catholic Care, who are new this year and have showed a great amount of support to PY families. These workers attend the play-group on a regular basis and provide invaluable specialist information and support to families attending.

“I was worried about coming to Parenting Young as I didn't know what the group was all about. I came along with a friend 4 years ago and have enjoyed the group and will be sad to leave at the end of the year.”



Paint the Blue REaD

Billy Booksie, and his sister Billie, made appearances throughout the year at a variety of community events, including community festivals (e.g. Mid Mountains Festival) and community Fun Days (e.g. ACRC Holiday Fun Day) and was a regular visitor at a variety of supported playgroups, including the Koori Playgroup and Parenting Young. Billy's regular storytimes at Heatherbrae have also gathered a popular following.

In July 2016 MOCS joined the Children's Book Council of Australia (CBCA) and became a member of the recently formed Blue Mountains sub-branch. A meeting with the sub-branch coordinator Sheryl Cootes established a new partnership, which resulted in Billy Booksie being part of the Pirate Quest event at Katoomba Library on 17 September. Around 35 children and their parents attended and enjoyed workshops with children's authors and illustrators, as well as a treasure hunt and prizes. Billy Booksie made a visit and distributed his new Pirate Rhymes booklet, which he had developed especially for the day and Judith resourced an activities table where making newspaper pirate hats was the hit of the day, with children of all ages (including all the dads in attendance) making and proudly wearing their pirate hats.

Paint the Blue REaD is an active member of the national Paint the Town REaD network, with Judith presenting and having an information stall at the Mascot Training Day at Rooty Hill on 8 October. October also saw Billy Booksie make his first inter-state trip with Barbie Bates from Paint the Town REaD Ltd for the launch of Paint the Parks and Gardens REaD in South Australia. He had a wonderful time and made many new friends.

Billy Booksie Book Boxes

Book boxes are containers, in everyday places around the community, that hold pre-loved books targeted for children under school age. It is a way for everyone to see that reading with children can happen anywhere, and provides the means to make it happen. By providing opportunities for children to read, or be read to, this boosts our simple message of the importance of stories, rhymes and play, every single day for brain development and to prepare children for school.

During the year, Billy Booksie Book Boxes were given to Catholic Care Springwood, The Carrington Hotel Katoomba, Commonwealth Bank Katoomba, Katoomba North Hub Playgroup and Trish Doyle's office in Katoomba.

6th Annual Early Literacy Conference

Paint the Blue REaD was co-convenor, with Paint the Town REaD Ltd, for the 6th Annual Early Literacy Conference held at The Carrington Hotel Katoomba on 3, 4 & 5 May. The Conference theme was 'Climb Every Mountain - Songlines and Singing'. The Conference explored the importance of music and song in early language development, as well as exploring ways to work in partnership with local Aboriginal communities. Key note speakers included local Darug elder Aunty Jacinta Tobin. 140 delegates from around Australia attended the Conference and enjoyed stories, songs and games while learning about the latest research into baby brain and language development and sharing best practice models. Most delegates left talking about what they were taking home from the Conference to implement in their own projects. Special thanks to Matu Dawo and Vicki Skoulogenis, Nirimba TAFE Early Childhood Teaching students for their help.

'it was more than I expected. I was particularly moved by Auntie Carol and the opening, but also the Aboriginal and non-Aboriginal panel meant a lot to me. I thank the PTTR team for keeping our Aboriginal sisters and families central to the conference'

'Great 3 days! Came back energised and inspired'

'It was truly an amazing conference. So much thought and detail went into it.

It was lots of fun and one of the best conferences I have been to in a long time'

Reading Week 2017

Our annual celebration of stories, rhymes and play was held from 19 to 23 June. This year saw MOCS coordinate 11 partner agencies to provide 15 events in 8 townships, A total of 25 businesses and services participated in events, with around 275 children and 140 parents or carers attending. Well over half the children attending events met our mascot Billy Booksie for the first time and every child took home a Billy Booksie Rhymes Booklet.

A highlight of the week for Billy Booksie was having a song written about him by Tina from Sing and Grow, one of our partner organisations.

A special thank you goes to Matu Dawo, Anita Kennedy and Sarah Jordan, Nirimba Early Childhood Teaching students on placement who assisted with Reading Week activities.

Publications

As well as the Pirate Rhymes Booklet for Pirate Quest, Billy Booksie also created a booklet for Close the Gap Day, with the song 'Head, shoulders, Knees and Toes' in English, Darug and Gundungurra. To celebrate Christmas 2016 Billy made his own Advent Calendar and posted daily messages on his Facebook Page.

Throughout the 2016 calendar year, Billy Booksie posted weekly Early Learning Tips on his Facebook page. His following grew steadily throughout the year from around 40 to over 200.



Billy Booksie and Judith visit Katoomba North Hub Playgroup



Billy Booksie at Lawson Pre-School, assisted by Nirimba Early Childhood Teaching Student Matu Dawo on placement to assist with Reading Week activities.

a 4 year old child was overheard saying:

‘Billy is a real
life animal that
lives in caves in
the mountains
he isn’t a dress
up person’

Blue Mountains Occasional care

Blue Mountains Occasional Care provides low cost, flexible education and care to families with babies, toddlers and preschool age children in family grouping. The mobile nature of the service enables us to provide this care to families in the lower, mid and upper mountains, once a week. For more than 13 years we have taken enrolments from all 27 villages across the Blue Mountains. Our educational program is designed by an Early Childhood Teacher and team of qualified educators using the Early Years Learning Framework. Our priority is to provide quality education and care to families with children 0-5 years, that may otherwise face vulnerability by isolation and disadvantage due to their location, distance from family support networks, physical or wellbeing health issues. Our outreach work, as a part of MOCS, has also enabled children with a disability or special need to experience early integration support within this service, as a soft entry point to formal Education and Care, and providing respite for their carers.

BMOCCS continues to have a very positive reputation within the community. The service is run in Blaxland on Mondays at the Family Day Care building, Wednesdays in Lawson at the Mid Mountains Community Centre, and Blackheath on Fridays from the hall behind Blackheath Baptist Church. We have a long history of using these venues. Running from the Neighbourhood Centre at Lawson enables us to maintain a close relationship with them, their activities, and the Lawson community.

Our service employs 4 part time Educators: Cathryn Ferreira, Coordinator - Diploma of Teaching (Early Childhood), Simone Witherow, Cate Harrison, both holding Certificate III in Children's Services (or equivalent) and Emily McKay, who holds a Diploma of Children's Services, and is working toward her Bachelor of Teaching (Early Childhood). Cate and Simone continue to work for MOCS' MMM program as carers, providing 'consistency of carers' for children and their families; one of the key quality areas outlined by the National Quality Framework which informs all that we strive to achieve. It also allows a flow on of enrolments from MMM to BMOCCS and vice versa, as parents get to know and trust the quality of care that can be provided by our caring Educators.

Three staff updated their First Aid qualifications, and all staff updated their Asthma and Anaphylaxis qualifications, in line with the ACECQA guidelines.

Staff also attended our final 'Mobile Meet' in the city, and attended some fabulous workshops, including an interesting session with the State Government, regarding continuing, and ongoing funding for mobile services.

This year we have again secured ISP funding to support a child with additional needs. This has meant that we have been able to employ Mia Gyaneshwar 3 hours a week at Blackheath, to support and work alongside this child, and others, needing extra support to integrate into the programme. 2017 has seen us continue to welcome volunteer Leesa Raynor at our Lawson venue.

Our biggest demand for places continues to be 12 mths to 3 and a half years age group. 8% of our children identified as ATSI or TSI, and 6% identified as CALD. We still remain affordable and flexible, for all age groups, and many children stay with us from babyhood to the end of their year before school. Family grouping is one of our unique aspects, and parents are attracted by this style of grouping. Fees remain the same as last year, as Commonwealth funding to State preschools for 4 year olds, has reduced the daily fee at these preschools for families, and this has impacted on the number of older children attending BMOCCS.

We have advertised in the Gazette, visited local playgroups to drop off brochures, asked families to take brochures to their mother's groups, and our poster has been displayed at the Lower Mountains Family Medical Practice. We continue to actively use Facebook to post items about BMOCCS and other parenting group posts of interests, to keep the page fresh and interesting.

During the year we had students from Nirimba TAFE who carried out an entire service survey, approaching families as they arrived at each venue, asking them to fill out a quick questionnaire.

Our results were complimentary, with regards to the high regard that parents felt for the care of their children, and the work that we do. They can be seen on page 9 of this report.

'We love
this
service'

'Been using this service for 6 years. Can't fault it
other than not enough hours and days'

'I am grateful for this service. It has really
helped my family'



A story from our service with a quote from one of our children:

Following the Circle of Security approach, staff take the time to develop meaningful and supportive relationships with families, helping us to understand their needs, and opening a flow of information between them and us about their children and their family.

This week, E's friend C came to visit BMOCCS as an orientation before he began the following week. C was shy and a little nervous, and stood close to his Mum and Dad, as they chatted to Cathryn the Coordinator. E was sitting at the morning tea table, when she saw that her friend was feeling too shy to come any further into the room.

She called out to her friend **'Don't worry C, Cathryn will take good care of you'**

I consider E's confidence of our capacity to care for, and look after, children as high praise. In the past, E has also felt some separation anxiety, and we have practised our 'Circle of Security' approach, by 'staying close' to her, 'being emotionally available', and being her 'safe haven', when she needed one.

We embed this practice into our everyday care with all the children, more consciously so, when children are transitioning from home to our care. This requires our caring, experienced staff to be sensitive, respectful, and thoughtful of the children's individual needs.

136 children were enrolled this financial year many of whom identify our service as their child's first early childhood educational experience. We had a total attendance of 1,484 paid places. We are active in assisting families with a sensitive transition to care and education. We have been able to support families who needed care for children while they attended appointments, parents working from home to earn an income, providing support to parents that do not have extended family in the immediate area and need respite from their children enabling them to return at the end of the day refreshed, support to first time mum's who have been career women and find motherhood a complex role. We have a number of families using 2 venues, and are prepared to travel, as they found our service and team caring and sensitive to their children's needs, in preference to using 2 separate Early Childhood settings, as they preferred to have consistency of carers for their children.

MOCS Mobile Minders

MMM continues to provide quality low cost childcare to a range of Service Providers within the Blue Mountains. The flexibility and mobility of the service enables us to support parents and carers to access a range of community education groups, meetings, playgroups and community events.

MMM has many longstanding clients and new organisation/services: this year we provided childcare and children's activities to 14 different community groups and organisations including Gateway Family Services, Blue Mountains City Council, Brighter Futures, Enrich, Aboriginal Culture and Resource Centre, Australian Breastfeeding Association, Connect Child and Family Services, Blue Mountains Women's Health and Resource Centre, West Connect Domestic Violence Service, Mid Mountains, Katoomba and Blackheath Area Neighbourhood Centres.

The MMM team has provided child care and children's activities throughout the mountains from Lapstone to Mt Victoria in a variety of venues including community halls, parks and schools. Service providers give frequent feedback that they would not be able to achieve the attendance they attract and highlight the valuable contribution that MMM makes to the families of the Blue Mountains.

Session numbers have been varied from term to term. In term 3 there were 84 sessions, term 4: 67, term 1: 73 and term 2: 82, some sessions required 2 workers. The total of sessions attended by MMM workers this year was 306, with a total of 910 children attend. MMM continues to support BMOCS with additional staff when needed.

MMM provided children's activities at Katoomba Neighbourhood Centre Family lunches; two Aboriginal Culture and Resource Centre Family Fun Days held at Melrose Park, Katoomba; Bike Week at Lapstone for Blue Mountains City Council and a Meet Your Street event for Katoomba Neighbourhood Centre

MMM continues to maintain around 8-10 staff members, myself and Tanya Clark and the casual team of Jeannie Elliott, Sally Weymouth, Meg Grunsel, Sarah Rees, Deb Dunn, Robyn Wright and Nadia Cameron along with Barby Wylie and Amy Gaymer joining the team this year. BMOCS workers, Simone Witherow and Cate Harrison continue to support MMM when job bookings are high

This year has seen MMM worker Sally Weymouth continue to support Koori playgroup run by the Aboriginal Culture and Resource Centre. Sally attends playgroup each week. This connection encouraged a visit by Koori playgroup families to Hazelbrook Scout Hall playgroup on Close the Gap Day, which was a great success.



MMM provides support to Kookaburra Playgroup run by Mid Mountains Neighbourhood Centre. MMM worker Jeannie Elliot, attends each week to provide activities for the children and support for families.

"This is an awesome set up Jeannie. I just don't have the time to do anything else but get here with my two kids." Mum Kookaburra Playgroup

MMM staff attended in house training on Child Protection and the Mandatory Reporters Guide presented by Nepean Blue Mountains Area Health staff in Term 1 2017.

I would like to thank the MMM team for their flexibility and professionalism in supporting children and their families.

Networks and Partnerships

MOCS has always been engaged in collaborative practice with other services as is seen from the project reports earlier.

Coalition Against Violence and Abuse and Child Protection Week Committee:

Liz continues to attend the CAVA network meetings monthly. She also convenes the Child Protection Week Committee that organises events and awareness raising during Child Protection Week. In 2016 a short animation was produced using children's drawings with children talking about what it means to be safe.

Mid Mountains Community Hub Steering Committee:

Liz convenes this committee of local stake holders including Mid Mountains Neighbourhood Centre, schools, early childhood services and parents to provide feedback and ideas about the Hub programme. It is also a chance to network and information share about the local area. The Committee met twice in 2016/17.

Lawson Public School Weekly Breakfast Club:

After consultation with Lawson Public School Principal and P&C, Liz initiated a breakfast club at the school. She engaged support from Central Blue Mountains Rotary, who provide cereal, milk and spreads; Lawson Cake and Bread shop who supply bread; and Blue Mountains Food Co-op who provide vouchers for fruit and other food. Liz is there each Friday to serve the breakfast with help from Lawson P&C and Rotary. It varies from week to week but approximately 30 – 50 children enjoy the healthy breakfast each Friday and it has become a social hub for parents, school students and pre-schoolers to meet and connect. The breakfast is for everyone, however Liz and the school have noted that vulnerable families are coming to the breakfast.

Katoomba Family Lunches:

Liz and Cate worked in partnership with Katoomba Neighbourhood Centre and Blue Mountains Family Support Service to hold free community family lunches in Katoomba. Only one occurred this past year with Cate providing face painting and kid's activities and Liz helping with serving lunches and interacting with children and parents.

Mountains Multicultural Interagency and Mental Health and Wellbeing Interagency:

Due to increased activity in the BLINN and BLINN-CDW groups, Judith has not been able to attend these Interagencies on a regular basis. However, she remains on the mailing list for both Interagencies and keeps a 'watching brief' in this way.

Blue Mountains Community Interagency:

Lyn attends these monthly meetings organised by Mountains Community Resource Network.

Paint the Town REaD Coordinators Forums:

Judith is a regular attender of the quarterly Coordinators Forums and has contributed to reporting, evaluation and research projects undertaken by this Group, as well as partnering with Paint the Town REaD Ltd in convening the 6th National Early Literacy Conference, reported on elsewhere in this document.

Katoomba North Hub Steering Committee:

Judith is a member of this group, in her capacity as Paint the Blue REaD Coordinator, to promote better links and coordinated activities in the Katoomba North area.

Women's Heart Health Photographic Exhibition:

Judith is part of this project, coordinated by the Blue Mountains Women's Health Centre, which is using the medium of photography to work with various women's groups throughout the Blue Mountains, including Parenting Young, to promote information about preventing heart disease in women. The project will culminate in an Exhibition to be held at the Women's Health Centre in September 2017.

Australian Services Union:

Lyn continues as the BM Delegate on the Social and Community Services Committee of Management. In her capacity of Vice-President of the ASU NSW and ACT Lyn attended the ASU National Conference in November. Lyn is also on the Board of the Australian College of Community and Disability Practitioners.

Resilience and Preparedness Working Group:

MOCS continues to be a member of this group and participated in Get Ready month in September 2016 where we partnered with the Rural Fire Service and promoted bush fire preparedness information to families.

Stronger Families Alliance and Linker Network:

MOCS continues to be on the executive and main group of the Stronger Families Alliance and to participate in the Supported Playgroup Measurement project with Connect, Gateway and Thrive. We have worked together to create and trial a common welcome sheet, intake form and record of conversations and referrals and are finding that this is influencing and strengthening our work with families at playgroup. SFA is currently working on a *Child and Youth Ultimate Outcomes framework to prevent mental health problems and promote wellbeing* which MOCS signed as a proud partner to work on in February 2017. The BM FaCS funded services participated in a trial of the Linker Network which is about developing a common welcome approach and referral process when working with families. It completely fits with the way MOCS already works and builds on all the networks created and strengthened through the SFA over the past 10 years.



Financial Report

MOUNTAINS OUTREACH COMMUNITY SERVICE INC. ABN 71 284 737 359

Independent Auditor's Report to the Members

Report on the Audit of the Financial Report

Opinion

We have audited the financial report of MOUNTAINS OUTREACH COMMUNITY SERVICE INC. (the association), which comprises the Statement by Members of the Committee, Income and Expenditure Statement, Balance Sheet as at 30 June 2017, a summary of significant accounting policies and the certification by members of the committee on the annual statements giving a true and fair view of the financial position and performance of the association.

In our opinion, the accompanying financial report presents fairly, in all material respects, the financial position of the association as at 30 June 2017 and [of] its financial performance for the year then ended in accordance with the accounting policies described in Note 1 to the financial statements and the requirements of the Associations Incorporation Act 2009.

Basis for Opinion

We conducted our audit in accordance with Australian Auditing Standards. Our responsibilities under those standards are further described in the Auditor's Responsibilities for the Audit of the Financial Report section of our report. We are independent of the association in accordance with the ethical requirements of the Accounting Professional and Ethical Standards Board's APES 110 Code of Ethics for Professional Accountants (the Code) that are relevant to our audit of the financial report in Australia. We have also fulfilled our ethical responsibilities in accordance with the Code.

We believe that the audit evidence we have obtained is sufficient and appropriate to provide a basis for our opinion.

Emphasis of Matter – Basis of Accounting

We draw attention to Note 1 to the financial report, which describes the basis of accounting. The financial report has been prepared to assist the association to meet the requirements of Associations Incorporation Act 2009. As a result, the financial report may not be suitable for another purpose. Our opinion is not modified in respect of this matter.

Responsibilities of the Committee for the Financial Report

The committee is responsible for the preparation and fair presentation of the financial report in accordance with the financial reporting requirements of the Associations Incorporation Act 2009 and for such internal control as the committee determines is necessary to enable the preparation and fair presentation of a financial report that is free from material misstatement, whether due to fraud or error.

In preparing the financial report, the committee is responsible for assessing the association's ability to continue as a going concern, disclosing, as applicable, matters related to going concern and using the going concern basis of accounting unless the committee either intends to liquidate the association or to cease operations, or has no realistic alternative but to do so.

MOUNTAINS OUTREACH COMMUNITY SERVICE INC. ABN 71 284 737 359

Independent Auditor's Report to the Members

Auditor's Responsibilities for the Audit of the Financial Report


Our objectives are to obtain reasonable assurance about whether the financial report as a whole is free from material misstatement, whether due to fraud or error, and to issue an auditor's report that includes our opinion. Reasonable assurance is a high level of assurance, but is not a guarantee that an audit conducted in accordance with the Australian Auditing Standards will always detect a material misstatement when it exists. Misstatements can arise from fraud or error and are considered material if, individually or in the aggregate, they could reasonably be expected to influence the economic decisions of users taken on the basis of this financial report.

As part of an audit in accordance with Australian Auditing Standards, we exercise professional judgement and maintain professional scepticism throughout the audit. We also:

- Identify and assess the risks of material misstatement of the financial report, whether due to fraud or error, design and perform audit procedures responsive to those risks, and obtain audit evidence that is sufficient and appropriate to provide a basis for our opinion. The risk of not detecting a material misstatement resulting from fraud is higher than for one resulting from error, as fraud may involve collusion, forgery, intentional omissions, misrepresentations, or the override of internal control.
- Obtain an understanding of internal control relevant to the audit in order to design audit procedures that are appropriate in the circumstances, but not for the purpose of expressing an opinion on the effectiveness of the association's internal control.
- Evaluate the appropriateness of accounting policies used and the reasonableness of accounting estimates and related disclosures made by the committee.
- Conclude on the appropriateness of the committee's use of the going concern basis of accounting and, based on the audit evidence obtained, whether a material uncertainty exists related to events or conditions that may cast significant doubt on the association's ability to continue as a going concern. If we conclude that a material uncertainty exists, we are required to draw attention in our auditor's report to the related disclosures in the financial report or, if such disclosures are inadequate, to modify our opinion. Our conclusions are based on the audit evidence obtained up to the date of our auditor's report. However, future events or conditions may cause the association to cease to continue as a going concern.
- Evaluate the overall presentation, structure and content of the financial report, including the disclosures, and whether the financial report represents the underlying transactions and events in a manner that achieves fair presentation.

We communicate with the committee regarding, among other matters, the planned scope and timing of the audit and significant audit findings, including any significant deficiencies in internal control that we identify during our audit.

Signed on : *28 11 September 2017*


William Tomiczek F.I.P.A., Registered Company Auditor 1425
66 Emu Plains Rd Mt Riverview 2774

MOUNTAINS OUTREACH COMMUNITY SERVICE INC. ABN 71 284 737 359

**Committee's Report
For the year ended 30 June 2017**

Your committee members submit the financial accounts of the MOUNTAINS OUTREACH COMMUNITY SERVICE INC. for the financial year ended 30 June 2017.

Committee Members

The names of committee members at the date of this report are:

Julianne Abood, Chairperson
Susan Pearce, Treasurer
Lyn Pagan, Vice Chairperson
Susan Ambler, Secretary
Sandra Hill, Committee Member
Jacqueline Miller, Committee Member
Cheryl Adams, Committee Member
Prue Adams, Committee Member

Principal Activities

The principal activities of the association during the financial year were: Community Services.

Significant Changes

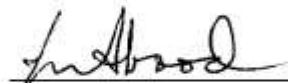
No significant change in the nature of these activities occurred during the year.


Operating Result

The profit/(loss) from ordinary activities after providing for income tax amounted to

Year ended	Year ended
30 June 2017	30 June 2016
\$	\$
(846.92)	0.27

Signed in accordance with a resolution of the Members of the Committee on:


Julianne Abood


Susan Pearce

The accompanying notes form part of these financial statements.

MOUNTAINS OUTREACH COMMUNITY SERVICE INC. ABN 71 284 737 359

Statement by Members of the Committee

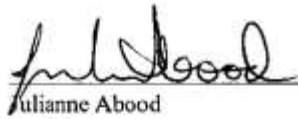
For the year ended 30 June 2017

The Committee has determined that the association is not a reporting entity and that this special purpose financial report should be prepared in accordance with the accounting policies outlined in Note 1 to the financial statements.

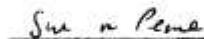
In the opinion of the Committee the Income and Expenditure Statement, Statement of Financial Position, and Notes to the Financial Statements:

1. **Presents fairly the financial position of MOUNTAINS OUTREACH COMMUNITY SERVICE INC. as at 30 June 2017 and its performance for the year ended on that date.**
2. **At the date of this statement, there are reasonable grounds to believe that the association will be able to pay its debts as and when they fall due.**

This statement is made in accordance with a resolution of the Committee and is signed for and on behalf of the Committee by:



Julianne Abood
President



Susan Pearce
Treasurer

The accompanying notes form part of these financial statements.

Mountains Outreach Community Service Inc

Balance Sheet [Last Year Analysis]

June 2017

	This Year	Last Year
Assets		
Current Assets		
Commonwealth Cheque Account	\$11,320.08	\$21,167.74
CBA Business Account	\$103,826.44	\$108,714.34
Fundraising Account	\$1,144.71	\$1,144.66
Debtors	\$0.00	\$8,752.20
Electronic Payments	\$0.00	-\$4,363.20
Petty Cash	\$350.00	\$350.00
Term Deposit Leave Provision	\$53,654.32	\$52,803.67
Term Deposit Replace Equipment	\$24,952.42	\$24,193.75
Term Deposit Van	\$21,313.42	\$20,975.51
GST Paid	\$2,181.85	\$1,916.63
Total Current Assets	\$218,743.24	\$233,655.30
Property & Equipment		
Motor Vehicles Special Equip	\$3,820.00	\$3,820.00
Motor Vehicles Accum Dep	-\$3,820.00	-\$3,820.00
Furniture & Fixtures at Cost	\$24,546.03	\$24,546.03
Furniture & Fixtures Accum Dep	-\$24,546.03	-\$24,316.89
Computers & Printers	\$14,532.45	\$14,532.45
Computers & Printers Accum De	-\$14,532.45	-\$14,532.45
Total Property & Equipment	\$0.00	\$229.14
Total Assets	\$218,743.24	\$233,884.44
Liabilities		
Current Liabilities		
Trade Creditors and Accruals	\$3,807.17	\$5,655.97
Grants in Advance	\$5,005.39	\$8,562.32
BMOCC Capital Grant	\$20,000.00	\$20,000.00
Provision - Van Replacement	\$7,800.00	\$7,800.00
Provision - Building Maint	\$1,000.00	\$1,000.00
Provision - Replace Equipment	\$15,374.19	\$15,374.19
Provision - MMH Playgroups	\$378.42	\$336.42
Provision - Mobile Contract	\$142.03	\$522.10
Provision - Unpaid Venue Hire	\$3,149.00	\$2,700.00
Provision - Parenting Young	\$4,239.20	\$5,439.20
Provision - MOCS Publications	\$3,200.29	\$2,835.29
Provision - Elders Lunch	\$1,203.55	\$1,003.55
Total Current Liabilities	\$65,299.24	\$69,229.04
Payroll Liabilities		
PAYG Withholding Tax	\$3,582.00	\$4,926.20
GST Collected	\$11,673.97	\$11,750.43
Provision - Long Service Leave	\$30,601.51	\$23,728.82
Provision - Annual Leave	\$36,508.24	\$33,143.36
Provision for Personal Leave	\$45,005.03	\$48,612.41
Superannuation Payable	\$3,679.46	\$11,286.66
Provision - Staffing Funds	\$11,919.51	\$11,909.55
Funds held till next year	\$5,211.81	\$10,643.03
Total Payroll Liabilities	\$148,181.53	\$156,000.56
Total Liabilities	\$213,480.77	\$225,229.60
Net Assets	\$5,262.47	\$8,654.84
Equity		
MOCS Equity	\$8,109.39	\$8,654.57
Current Year Surplus/Deficit	-\$846.92	\$0.27
Total Equity	\$5,262.47	\$8,654.84

Mountains Outreach Community Service Inc

Profit & Loss [Last Year Analysis]

July 2016 through June 2017

	This Year	Last Year
Income		
FACS CB Funding - MOCS	\$210,509.36	\$205,575.55
FACS CB ERO One Off Funding	\$11,773.06	\$9,212.03
BMCC Community Donations	\$1,750.00	\$750.00
DEC CS Funding - BMOCCS	\$85,367.04	\$85,367.04
DEC CS Funding- MMM	\$109,574.04	\$109,574.04
Workers Compensation Claim	\$0.00	\$489.51
BMCC Councillor Donations	\$0.00	\$280.00
Income - Aunty Joan Book	\$0.00	\$55.00
DEC - SACS/ERO Funding	\$7,724.33	\$7,206.18
Flexible Grants Program	\$0.00	\$2,520.00
Dep. Premier & Cabinet Funding	\$0.00	\$24,334.00
Dept of Veteran Affairs	\$4,568.26	\$2,479.01
Club Grant	\$1,000.00	\$0.00
FACS-One-Off Grant	\$700.00	\$0.00
FundAbility Northcott Funding	\$0.00	\$1,965.00
Brighter Futures - EI Funding	\$0.00	\$41,292.48
BF Brokerage	\$0.00	\$2,294.46
Aboriginal Artists in Schools	\$2,477.17	\$2,668.28
Elders Journey of Healing	\$700.00	\$0.00
NSW Reconciliation Grant	\$500.00	\$0.00
DET Inclusion Support Program	\$3,064.93	\$1,443.07
Bank Interest	\$2,385.98	\$4,314.12
Donations	\$747.61	\$322.39
Elders Lunch Donations	\$1,935.00	\$2,788.25
Service Management Levy	\$19,493.00	\$21,000.00
Reimburse Worker Costs	\$2,657.24	\$12,117.20
Reimburse Project Expenses	\$0.00	\$1,757.33
Contribution to Van Expenses	\$3,000.00	\$2,250.00
MOCS Membership Fees	\$18.00	\$14.00
Photocopying Contributions	\$735.00	\$1,344.00
PY - Provision	\$1,200.00	\$0.00
MMH Contributions	\$631.60	\$431.00
MMM Service Fees	\$9,785.00	\$10,311.18
Wagana Income	\$0.00	\$7,170.01
CBPP - Funding	\$0.00	\$4,980.00
BMOCCS Service fees	\$40,661.00	\$36,214.70
Fundraising	\$0.00	\$508.00
Income - Gundungurra Book	\$0.00	\$68.00
Income - Lyn Stanger's Book	\$0.00	\$152.00
Total Income	\$522,957.62	\$603,247.83
Cost of Sales		
Gross Profit	\$522,957.62	\$603,247.83
Expenses		
Staff Costs		
Wages & Salaries	\$348,770.02	\$380,812.57
Relief Wages	\$24,368.29	\$38,528.96
Annual Leave Provision	\$3,364.88	-\$1,037.98
Personal Leave Provision	-\$3,607.38	-\$5,964.42
LSL Provision	\$6,872.59	\$4,510.40
Staff Training	\$2,840.91	\$2,069.84
Superannuation	\$34,150.67	\$37,435.71
Workers Compensation	\$7,984.96	\$9,648.93
Staff Supervision	\$485.00	\$876.36
Administration Expenses		
AGM & Planning Day Costs	\$392.15	\$1,105.23
Audit Fees	\$2,545.45	\$2,918.18
Bank Charges	\$262.18	\$242.82
BAS Rounding	-\$0.62	-\$0.85
Computers & Printers	\$177.27	\$149.18
Consumables	\$1,809.58	\$3,453.78
Insurance	\$6,383.65	\$4,543.64
Internet access	\$235.41	\$1,127.12

Mountains Outreach Community Service Inc

Profit & Loss [Last Year Analysis]

July 2016 through June 2017

	This Year	Last Year
Service Management Levy	\$19,493.00	\$19,493.00
Membership & Subscriptions	\$1,983.09	\$1,554.54
Position Advertisements	\$0.00	\$180.91
Postage	\$305.45	\$436.06
Printing & Photocopying	\$3,489.10	\$2,618.33
Publicity	\$524.33	\$665.40
Publications	\$1,735.32	\$554.55
Repairs & Maintenance	\$0.00	\$85.00
Research	\$0.00	\$13,894.71
Stationery & Office Supplies	\$1,664.76	\$1,551.84
Telephone	\$2,234.13	\$1,278.81
Mobile phone	\$1,329.25	\$2,410.57
Website Hosting	\$1,986.51	\$909.09
Total Administration Expenses	<u>\$46,550.01</u>	<u>\$59,171.91</u>
Program Costs		
Corporate Overheads BF	\$0.00	\$1,588.82
Brokerage BF	\$0.00	\$2,294.46
Program Costs BF	\$0.00	\$1,584.59
Children's Equipment	\$1,116.07	\$1,223.33
Community Development AF	\$200.00	\$0.00
Donations to community groups	\$50.00	\$309.55
Mid-Mountains Hub Expenses	\$1,598.80	\$410.18
PY Playgroup Expenses	\$1,877.01	\$140.54
Craft Materials	\$936.79	\$547.63
Food	\$210.65	\$0.00
Guest Speakers/Facilitators	\$2,555.00	\$6,876.39
Welcome to Country	\$950.00	\$0.00
Wagana Expense	\$0.00	\$7,170.01
Aboriginal Projects	\$300.00	\$254.55
Equipment Hire	\$300.00	\$0.00
Elders Lunch Expenses	\$2,083.02	\$2,328.70
Equipment	\$161.06	\$2,700.00
Research - Project	\$0.00	\$2,063.00
Resources	\$352.68	\$0.00
Repairs / Construction	\$0.00	\$1,509.75
Design Work	\$250.00	\$0.00
Rent		
Rent & Expenses	\$11,926.48	\$18,729.91
Venue Hire	\$8,143.10	\$9,000.91
Travel		
Travel	\$2,703.87	\$4,921.92
Travel Expenses	\$36.50	\$133.94
Contribution to Van Expenses	\$3,000.00	\$11,023.97
Capital/Equipment Expenses		
Depreciation of Equipment	\$229.14	\$223.13
Photocopier Rental	\$2,160.00	\$2,160.00
Van Expenses	\$8,799.27	\$0.00
Total Expenses	<u>\$521,719.39</u>	<u>\$603,247.56</u>
Operating Profit	<u>\$1,238.23</u>	<u>\$0.27</u>
Other Income		
Wagana Income	\$28,926.36	\$0.00
Total Other Income	<u>\$28,926.36</u>	<u>\$0.00</u>
Other Expenses		
Funds held till next fin year	\$5,211.81	\$0.00
Wagana Expenses	\$25,799.70	\$0.00
Total Other Expenses	<u>\$31,011.51</u>	<u>\$0.00</u>
Net Surplus / (Deficit)	<u>-\$846.92</u>	<u>\$0.27</u>

MOCS P&L**Income**

FACS CB Funding - MOCS	\$210,509.36
FACS CB ERO One Off Funding	\$11,773.06
Bank Interest	\$1,287.98
Elders Lunch Donations	\$1,935.00
Service Management Levy	\$19,493.00
Reimburse Worker Costs	\$2,657.24
Contribution to Van Expenses	\$3,000.00
MOCS Membership Fees	\$18.00
Photocopying Contributions	\$735.00
PY - Provision	\$1,200.00
MMH Contributions	\$631.60
Total Income	\$253,240.24

Expense

Wages & Salaries	\$181,930.98
Annual Leave Provision	(\$746.67)
Personal Leave Provision	\$314.71
LSL Provision	\$3,585.66
Staff Training	\$865.45
Superannuation	\$17,207.73
Workers Compensation	\$3,872.68
Staff Supervision	\$485.00
AGM & Planning Day Costs	\$392.15
Audit Fees	\$1,298.18
Bank Charges	\$262.18
BAS Rounding	(\$0.62)
Computers & Printers	\$177.27
Consumables	\$749.64
Insurance	\$3,470.03
Internet access	\$235.41
Membership & Subscriptions	\$1,349.00
Postage	\$113.55
Printing & Photocopying	\$1,975.37
Publicity	\$343.42
Stationery & Office Supplies	\$1,345.57
Telephone	\$1,628.13
Mobile phone	\$662.89
Website Hosting	\$568.15
Community Development AF	\$200.00
Donations to community groups	\$50.00
Mid-Mountains Hub Expenses	\$1,571.15
PY Playgroup Expenses	\$1,877.01
Craft Materials	(\$35.38)
Guest Speakers/Facilitators	\$535.00
Welcome to Country	\$300.00
Elders Lunch Expenses	\$2,083.02
Equipment	\$85.41
Resources	\$252.95
Rent & Expenses	\$11,926.48
Venue Hire	\$89.09
Travel	\$1,740.96
Travel Expenses	\$28.96
Depreciation of Equipment	\$229.14
Photocopier Rental	\$2,160.00
Van Expenses	\$8,799.27
Total Expense	\$253,978.92

Net Profit (Loss) (\$738.68)

BMOCCS P&L**Income**

BMCC Community Donations	\$1,500.00
DEC CS Funding - BMOCCS	\$85,367.04
DEC - SACS/ERO Funding	\$2,944.82
Bank Interest	\$478.00
Donations	\$370.00
BMOCCS Service fees	\$40,661.00
Total Income	\$131,320.86

Expense

Wages & Salaries	\$93,973.05
Annual Leave Provision	\$3,435.46
Personal Leave Provision	(\$3,390.48)
LSL Provision	\$1,933.79
Staff Training	\$1,450.00
Superannuation	\$9,088.29
Workers Compensation	\$1,956.36
Audit Fees	\$560.00
Consumables	\$619.38
Insurance	\$1,300.24
Service Management Levy	\$8,536.00
Membership & Subscriptions	\$634.09
Printing & Photocopying	\$471.00
Publicity	\$180.91
Stationery & Office Supplies	\$145.78
Telephone	\$288.00
Mobile phone	\$380.04
Children's Equipment	\$736.39
Craft Materials	\$297.92
Equipment	\$75.65
Venue Hire	\$6,909.01
Travel	\$232.44
Travel Expenses	\$7.54
Contribution to Van Expenses	\$1,500.00
Total Expense	\$131,320.86

Net Profit (Loss) \$0.00

ISP**Income**

DET Inclusion Support Program	\$3,064.93
Total Income	\$3,064.93

Expense

Wages & Salaries	\$39.68
Relief Wages	\$3,025.25
Total Expense	\$3,064.93

Net Profit (Loss) \$0.00

MMM P&L

Income	
BMCC Community Donations	\$250.00
DEC CS Funding- MMM	\$109,574.04
DEC - SACS/ERO Funding	\$4,779.51
Bank Interest	\$620.00
MMM Service Fees	\$9,785.00
Total Income	\$125,008.55

Expense

Wages & Salaries	\$72,826.31
Relief Wages	\$21,343.04
Annual Leave Provision	\$676.09
Personal Leave Provision	(\$531.61)
LSL Provision	\$1,353.14
Staff Training	\$525.46
Superannuation	\$7,854.65
Workers Compensation	\$2,155.92
Audit Fees	\$687.27
Consumables	\$102.50
Insurance	\$1,613.38
Service Management Levy	\$10,957.00
Printing & Photocopying	\$631.50
Telephone	\$318.00
Mobile phone	\$286.32
Children's Equipment	\$379.68
Craft Materials	\$454.43
Venue Hire	\$1,145.00
Travel	\$730.47
Contribution to Van Expenses	\$1,500.00
Total Expense	\$125,008.55

Net Profit (Loss) \$0.00

AASP

Income	
Aboriginal Artists in Schools	\$2,477.17
Total Income	\$2,477.17

Expense

Publications	\$300.00
Stationery & Office Supplies	\$81.82
Craft Materials	\$59.82
Food	\$210.65
Guest Speakers/Facilitators	\$500.00
Resources	\$99.73
Total Expense	\$1,252.02

Other Expense	
Funds held till next fin year	\$1,225.15
Total Other Expense	\$1,225.15

Net Profit (Loss) \$0.00

Holiday Fun

Income	
Club Grant	\$1,000.00
Total Income	\$1,000.00

Expense

Consumables	\$20.00
Guest Speakers/Facilitators	\$180.00
Total Expense	\$200.00

Other Expense	
Funds held till next fin year	\$800.00
Total Other Expense	\$800.00

Net Profit (Loss) \$0.00

Paint the Blue REaD

Income	
Donations	\$377.61
Total Income	\$377.61

Expense	
Consumables	(\$5.74)
Stationery & Office Supplies	\$91.59
Welcome to Country	\$100.00
Equipment Hire	\$300.00
Total Expense	\$485.85

Net Profit (Loss) (\$108.24)

ANZAC

Income	
Dept of Veteran Affairs	\$4,568.26
Total Income	\$4,568.26

Expense

Consumables	\$11.45
Postage	\$191.90
Printing & Photocopying	\$411.23
Publications	\$1,435.32
Website Hosting	\$1,418.36
Guest Speakers/Facilitators	\$150.00
Welcome to Country	\$400.00
Aboriginal Projects	\$300.00
Design Work	\$250.00
Total Expense	\$4,568.26

Net Profit (Loss) \$0.00

Elders Journey of Healing

Income	
Elders Journey of Healing	\$700.00
Total Income	\$700.00

Expense

Consumables	\$72.35
Mid-Mountains Hub Expenses	\$27.65
Guest Speakers/Facilitators	\$600.00
Total Expense	\$700.00

Net Profit (Loss) \$0.00

Grandparents Day Funding

Income	
FACS-One-Off Grant	\$700.00
Total Income	\$700.00

Expense

Consumables	\$240.00
Craft Materials	\$160.00
Guest Speakers/Facilitators	\$300.00
Total Expense	\$700.00

Net Profit (Loss) \$0.00

Reconciliation Projects

Income	
NSW Reconciliation Grant	\$500.00
Total Income	\$500.00

Expense

Guest Speakers/Facilitators	\$290.00
Welcome to Country	\$150.00
Total Expense	\$440.00

Other Expense	
Funds held till next fin year	\$60.00
Total Other Expense	\$60.00

Net Profit (Loss) \$0.00

Wagana

Income	
Wagana Income	\$28,926.36
Total Other Income	\$28,926.36

Expense	
Funds held till next fin year	\$3,126.66
Wagana Expenses	\$25,799.70
Total Other Expense	\$28,926.36

Net Profit (Loss) \$0.00