



Mountains Outreach Community Service  
**Annual Report 2011-2012**



## *Table of Contents*

	Page
MOCS Statement	2
MOCS Staff and Committee Members	3
Funding Diagram	4
Organisational Structure	5
<u>Reports</u>	
Chairperson	6
Manager	7
Community Development	11
Childrens Community Development	15
Parenting Young	18
Brighter Futures	20
Mountains Mobile Minders	21
Blue Mountains Occasional Child Care Service	22
Financial Administrator	25
<u>Financial Documents</u>	
Independent Audit Report	
Statement of the Management Committee	
Financial Statements	

Artworks on front cover by students from Hazelbrook and Springwood Public School for the Schools Reconciliation Challenge, 2012.

## *Who is MOCS?*

Mountains Outreach Community Service brings people together by providing activities and services for children, families, individuals and groups living in the Blue Mountains.

We are a community managed organisation funded through NSW Department of Community Services.

We provide a range of free or low cost services in a variety of locations. This includes;

- ❖ Child care
- ❖ Community Arts Projects
- ❖ Family and Community Activities
- ❖ Playgroups
- ❖ Workshops and Courses
- ❖ Access to Information, Skills and Resources.



## *Members of MOCS*

### **Staff**

MOCS Manager	Lyn Bevington
Financial Administrator	Elaine Cameron
Admin Support Worker	Jade Pyle
Community Development Worker	Anne Fitzgerald
Children's Community Development Worker & Mid Mountains Community Hub Coordinator	Liz Smith
Parenting Young Facilitator & Brighter Futures Group Support Worker	Sophie Corbett
BMOCCS Coordinator & Authorised Supervisor	Kerry Knibbs
MMM Facilitator & Supported Playgroup Facilitator	Jane Marshall
MMM Worker & Supported Playgroup Assistant	Danielle Wilding-Forbes
Child Care Workers	Shelly O'Toole Belinda Fielding Simone Witherow Tanya Clarke Tess White Teresa Harvey
	Nadia Ireland Meg Grunsell Nelda King Beth Madden Jackie Gilchrist

### **Management Committee**

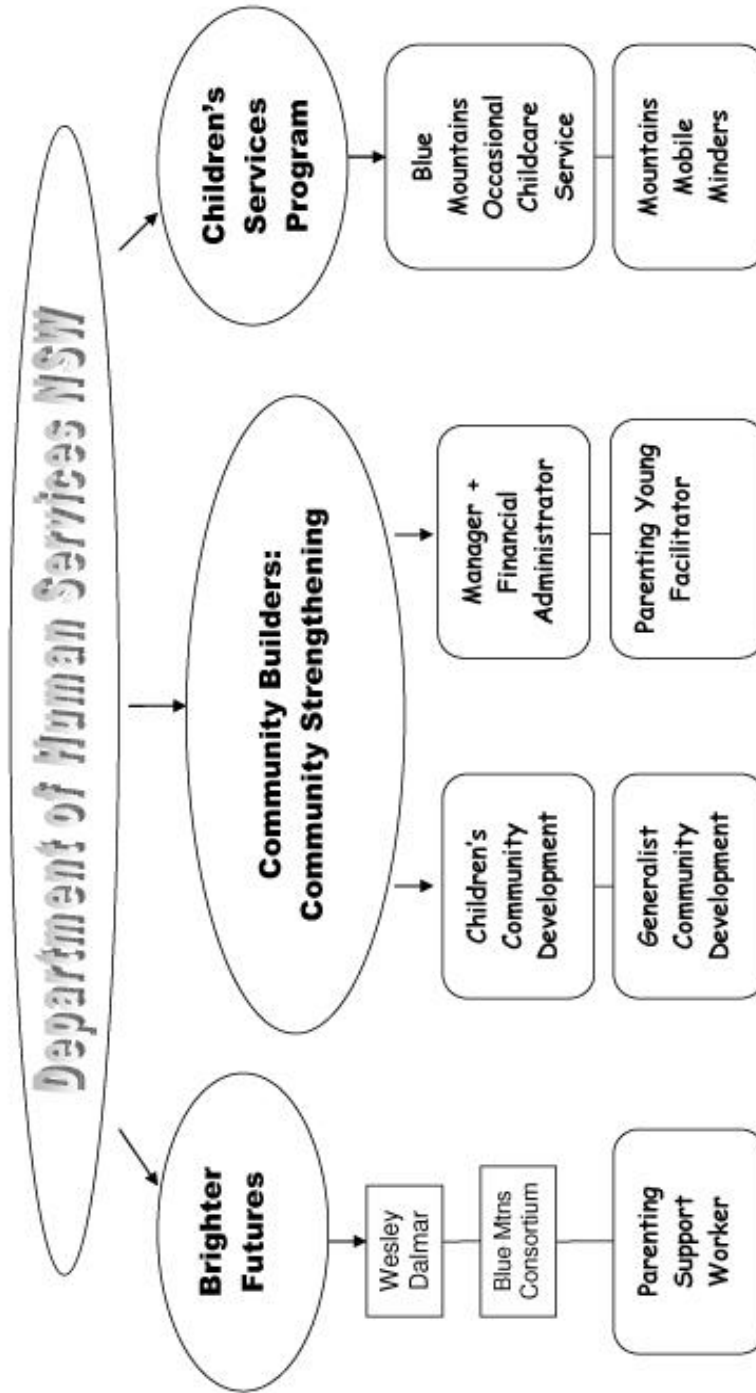
Chairperson	Julianne Abood
Vice Chairperson	Lyn Pagan
Secretary	Sandra Hill
Treasurer	Sue Pearce

### **Committee Members**

Emma Marlor
Jane Gilling
Loren Hayes-Marshall
Jeannie Elliot
Rachel Palmer

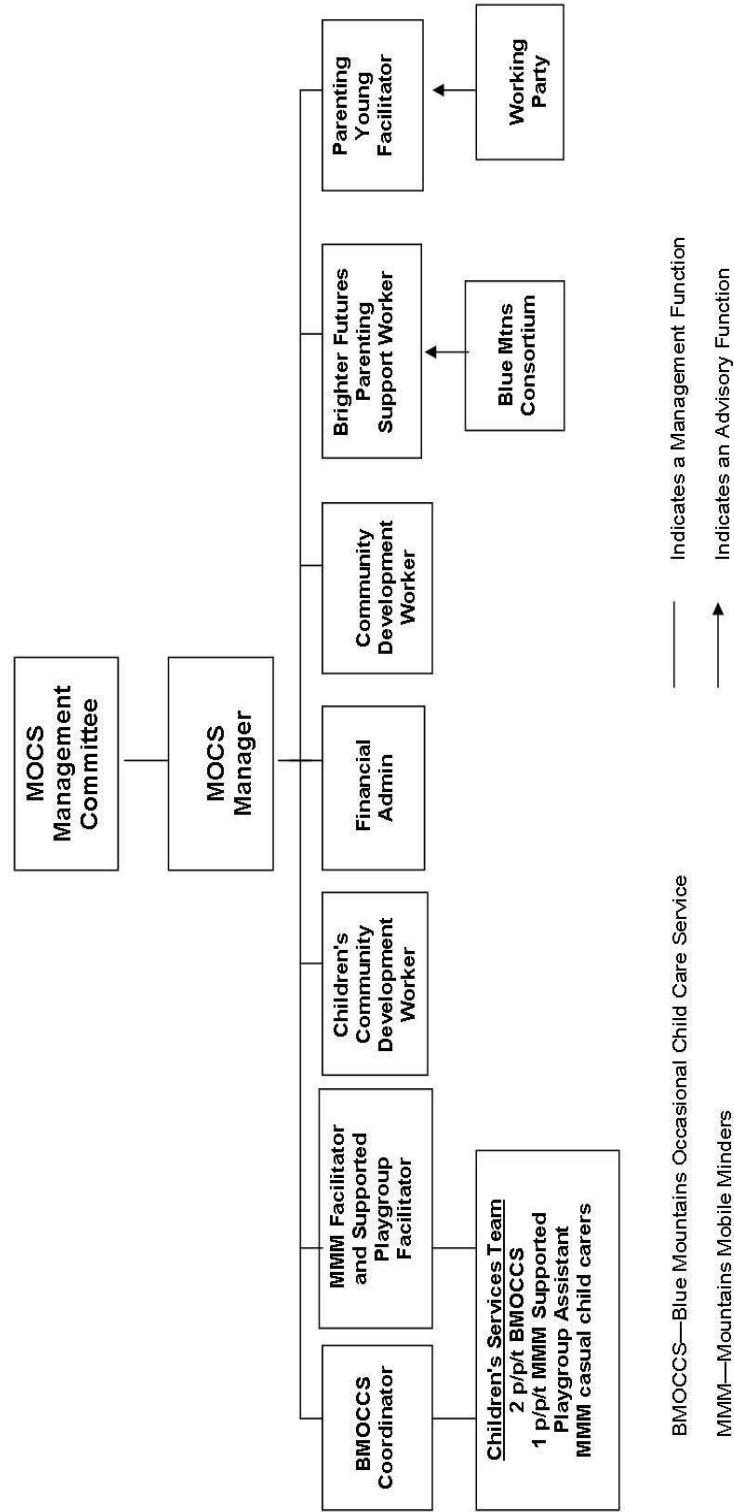
We acknowledge the Darug and Gundungurra people as the Traditional Custodians of the land we live and work on.

Funding Diagram for Mountains Outreach Community Service





## Organisational Structure for Mountains Outreach Community Service Inc



## *Chairperson's Report*

As my second year as Chairperson of Mountains Outreach Community Service (MOCS) comes to an end I sit and reflect on how much I have learned and how such a great group of Management Committee and MOCS team members have made the work achieved over the course of the year so enjoyable.

The past year has been one of relative stability within the organisation providing the MOCS manager and team with the opportunity to consolidate and build on their strengths. The meshing of exuberant creativity into the very practical program delivery requirements is wonderful to see unfold at every point of the work MOCS does. This year the MOCS website was refreshed with MOCS Facebook groups emerging to address growing trends within the community. Paint the Blue Read continues to successfully spread with excitement the importance of early literacy across the Blue Mountains and with fellow partners and mascots across the region. BMOCCS has been revitalised, renewed and focused on building a high quality service. The Mid Mountains Community Hub was officially opened early this year with an innovative community room to help engage and connect parents with local services. Parenting Young held their first local retreat at Camp Fletcher, providing parents and children the opportunity to connect with other local young families and to explore the local bush land. These are just a few of the great program initiatives that you will read about in this years' annual report.

MOCS is well recognised in the community for their ongoing commitment and leadership around working for reconciliation in the Blue Mountains and have recently decided to develop a MOCS Reconciliation Action Plan (RAP) in the coming year. By embarking on a RAP journey MOCS will have the opportunity to explore, expand, integrate, formalise and ensure sustainability of how MOCS works with Aboriginal and Torres Strait Islander children, families and community in the Blue Mountains, now and in the future.

MOCS, like all other family and community services have had the added joy of reclassifying employees under the new SCHADS award. Special thanks to Lyn Pagan, Sue Pearce and Lyn Bevington whose time and patience are greatly appreciated as we worked together on this sub-committee.

I would like to express my special thanks and acknowledgement to all Management Committee members for their valued contributions and generous volunteering of time over the course of the year through sickness and in health. I would also like to thank all the services in the Blue Mountains for the great work achieved in collaboration with MOCS, working together to build a shared vision of a happy, connected and healthy community.

Finally, it is with great pleasure that I look forward to working with the MOCS team and Management Committee over the next year to continue our work together in providing the very best that we can for all children and families across the Blue Mountains.

*Julianne Abood*  
*MOCS Chairperson*

## Manager's Report

For me, the highlight of these 12 months was the 30<sup>th</sup> Birthday celebration for MOCS held on 16<sup>th</sup> November 2011. All the staff pulled together to create a 30<sup>th</sup> *Anniversary Historical Summary* which we launched at our AGM along with a wonderful song about our work sung by the MOCETTES (7 staff members) and set to the tune of 'King of the Road'. Many past MOCS workers were able to attend so it was a wonderful evening of sharing stories of grass roots community development work over 30 years plus delicious food and a fabulous cake made by one of our playgroup parents, Lucy Barnham.



Above: Julianne and Lyn cut the cake. Left: Crowd at MOCS 30<sup>th</sup>



I have continued to be involved in something very close to my heart by keeping my role as Convenor of the very dynamic BM People for Reconciliation/BMANTaR which meets monthly and conducts a number of reconciliation activities throughout the year. In July 2011 we supported BM Aboriginal Culture and Resource Centre to hang and sit the NAIDOC Art show at Lawson PS hall. Forty works were exhibited by six Aboriginal artists plus we sold tickets for BMP4R/BMANTaR Dreaming Festival raffle to support the Wollemi Dancers going to the Dreaming Festival in 2012.

On 27<sup>th</sup> October 2011 we screened *Our Generation* film with a very inspiring talk by journalist Jeff McMullen that was attended by 40 people. On 28<sup>th</sup> October, 70 women attended the 3<sup>rd</sup> Blue Mountains Women's Spirit Event in Lawson. It was a partnership of Aboriginal elder Aunty Carol Cooper, Aboriginal community member Vicky Barrett and non-Aboriginal elder Elaine Telford, BMP4R, MOCS, BM Institute of TAFE with financial support from the Blue Mts Women's Health and Resource Centre and MAX Employment. Three Community Services students, Ang Howe, Jodi Muller and Kylie McBey, worked hard for 2 months to plan and prepare for this special day. The Narrative story telling 'Tree of Life' process developed by the Dulwich Centre, Adelaide, was used to engage the participants in sharing stories of meaning in small groups which were then portrayed on a tree to represent the groups' collective aspirations. Local children and artists enriched the day including The ForTunes vocal quartet, the Jo Clancy Wollemi dancers and Year 5



and 6 students from Lawson PS, Spiral Duo, Jacinta Tobin singing in Darug language. The event closed with all participating in the Universal Song of Peace led by Jane.

In Reconciliation Week 2012 on 2<sup>nd</sup> June, 87 adults and children attended *Keep Talkin' Reconciliation* afternoon in Lawson to showcase the wonderful work being done to forward the reconciliation journey in the BM. From the workers and parents involved we heard about the inspiring work being done at North Katoomba PS, Blaxland Community Preschool, Hazelbrook PS, Katoomba and Nepean Hospitals and some Penrith schools. We also launched our groups' 2<sup>nd</sup> bi-annual report *The Journey of Reconciliation in the Blue Mountains 2010 – 2011*.

Our staff team has been very stable for the past year with the only change being Jade Pyle who joined us in February 2012 as our Administrative Assistant supported through wage subsidy via Campbell Page. Jade has settled in very well and is a great asset to our team. We really value the skilled support she gives across the whole organisation to administrative tasks as well as her involvement in our supported playgroups and Parenting Young.

Our Management Committee has continued to be ably led by Julianne Abood as Chairperson and the four new committee members, Loren Hayes-Marshall, Rachel Palmer, Emma Marlbor and Jeannie Elliott have settled in well. Emma joined the newly formed Mid-Mountains Community Hub Steering Committee and Jeannie joined the Paint the Blue Read National Year of Reading Strategy team. Sandra Hill does a great job as Secretary and has joined the Work Health Safety Committee with myself and Jane Marshall. I have really appreciated Julianne, Lyn Pagan and Sue Pearce's participation in the Staffing Committee to oversee the reclassification of our seven SACS positions into the Modern SCHADS Award which has taken a fair amount of time.

At our Planning Day in July 2011 we decided to redevelop the MOCS website so that we would be able to manage it ourselves. Our Community Builders Transition funds paid Deb Allen, BANC to guide us in the use of Word Press and paid Anne Fitzgerald extra hours to build our new website. We are very happy with the result as each worker can now update their pages whenever they need to and we also have a number of Facebook pages which are linked to our website and are being followed by more and more people each week. In addition, we mapped out our plans for our Community Builders funded Mid-Mountains Community Hub and Community Capacity Building projects. I have overseen our transition to this new reporting framework which has gone smoothly. Kerry Knibbs developed two new colourful brochures for BMOCCS and for MOCS which we can print and adapt as needed.

We have reinstated the children's workers professional development mornings where all permanent and casual staff working with children are paid to attend 3 hours of professional development twice per year. We follow this with a 'bring a plate' lunch which all MOCS workers attend – an important team building time.

MOCS continues to be an active partner in collaborative initiatives committed to building strong resilient families in the mountains such as Blue Mountains Consortium, Blue

Mountains Community Interagency, Raising Awareness of Mental Health Issues (RAMHI), Mountains Multicultural Interagency (MMI), CAVA, Child and Family Forum and the Stronger Families Alliance including being a member of the Child Friendly Cities Working Party and the Neighbourhood Service Networks Implementation Group. MOCS staff attended the *Child Friendly City lecture and workshop* in July 2011. I participated in the leadership program through SFA. With members of the MC I attended *Ethical Decision making and governance* forum organised by MCRN. I also attended *Incorporated Associations Act, New National OH&S Act, Let's get Connected RAP forum and Advanced Supervision* training which were all beneficial.

Kerry Knibbs does a wonderful job coordinating Blue Mountains Occasional Child Care. She has developed specific policies and procedures for the service and each term provides a very creative and engaging program for the children using the Early Years Learning Framework and her newly purchased i-pad! In December 2011, with the support of Lyn Pagan from MC we conducted Staff Appraisals. Kerry provides ongoing supervision to Simone and Nelda. MMM continues to provide 9 hours of support per week across 3 venues during term time to BMOCCS to maintain staff ratios during staff breaks and I would like to thank our casuals, Teresa Harvey and Jackie Gilchrist for the great work they do in this role. BMOCCS supports a number of children with special needs across our venues and we are grateful to receive additional funding through SCAN and ISP to meet the needs of these children at our service. There have been a number of WHS issues which have been addressed at our venues this year including re-flooring Blackheath shed to prevent flooding and building an access ramp at Winmalee to assist with moving equipment into the hall.

The supported playgroup model is working well at Parenting Young and Sophie Corbett has done a great job facilitating it with the support of Liz Smith and Danielle Wilding-Forbes from the MOCS team and members of the Working Party. The Parenting Young Facebook page has proved a great way to communicate with the young parents and we are very pleased that a number of them are also attending mainstream groups and programs. A number of the longer term participants graduated recently as they were over aged 25. In September 2011 Sophie, Liz and Danielle ran a very successful PY Retreat at Camp Fletcher in Hazelbrook that parents' reported finding very beneficial. The location made it much more manageable for Working party members to participate.

The Mid-Mountains Community Hub facilitated by Liz Smith has been extremely successful with a program of parent education groups and activities for families being conducted each term using our core Community Builders funding and through partnering with other organisations. The work of the Hub has been greatly strengthened by partnerships with Mid-Mountains Neighbourhood Centre, TAFE Outreach (*Parent Mentoring, Native Gardening on a Sloping Site*) and Lawson Public School. This year the school allocated a spare classroom as a Community Room where Liz organised a very successful launch on 21<sup>st</sup> February 2012. Since then many activities for parents from across the Mid-mountains and beyond have been run in this room. Liz consulted with community members to begin the process of establishing a community plan. The process of developing this plan has been further supported by Masters of Social Work student

Kaye Borg who began placement with us in May 2012. Our three supported playgroups run in the Mid-Mountains continue to provide much needed support to families.

Our new Community Development worker, Anne Fitzgerald has settled in very well and has greatly increased MOCS' use of social networking as well as supporting other groups such as RAMHI and MMI by establishing Facebook pages. Paint the Blue Read early learning project has had an extremely busy year with *Winter Tales* in August 2011 (partnership with West Words and Blue Mountains City Council), Reading Weeks in September 2011 and June 2012 where Anne coordinated the work of locality project teams to provide reading in villages from Glenbrook to Mt Victoria. Anne developed a Communications Policy for MOCS including permission forms for using images on our website and in social media. Anne coordinated the *Aboriginal Artists in BM Schools* project in term 1 2012 where we were very proud to have 5 Highly Commended entries to the NSW Reconciliation Schools Challenge. As our contribution to Mental Health month 2011 Anne developed a very successful expo *Off to a Flying Start* in conjunction with the Blue Fringe art exhibition held at Lawson PS hall.



Throughout the year MMM has provided child minding to 18 different community groups and organizations, with between 85 to 106 sessions per term as well as supporting other MOCS services, such as the Mid Mountains Hub playgroups and Fun Mornings, Parenting Young Playgroup and BMOCCS. Jane does a great job facilitating MMM and resourcing our pool of skilled casual MMM staff.

Elaine has calmly and very competently kept us on track financially and once again, received commendation from our auditor for her very professional skills.

Sophie Corbett does a great job working with Kerry Steele from Gateway Family Services to provide a parent support and family holiday program for all BM families engaged in Brighter Futures program. Sophie very ably coordinated the first ever BM + Hawkesbury BF Camp held at Vision Valley in April 2012.

I have continued my role as BM ASU delegate and member of SACS COM and ASU Branch Executive and MOCS staff continue to be active ASU members.

All is going very well in this busy, creative, responsive and highly professional organisation and it is a great privilege to be the Manager.

*Lyn Bevington*  
**Manager**

## *Community Development Workers Report*

Having hit the ground running when I arrived in March 2011 it soon became apparent that this is the usual pace of work at MOCS. (I'd like to think that is why I failed abysmally at the *walking* challenge set by BMWHRC – the pedometers tend to fly off). This past year my time as Community Development Worker at MOCS has been occupied with the development, promotion and evaluation of MOCS programs Paint the Blue REaD and 2012 Blue Mountains Aboriginal Artists in Schools; maintaining MOCS's strategic interagency participation with RAMHI, the Mountains Multicultural Interagency and the Child Friendly Cities committee of the Stronger Families Alliance; and supporting events such as the Elders Lunch and NAIDOC Week activities. Our MOCS digital profile is growing, necessitating work on promotions and communications across these programs; and the development and support of the website and facebook pages (PTBR, An Inclusive Blue Mountains, RAMHI, Blue Mountains Reconciliation). The MOCS research placement by Master of Social Work student Kaye Borg is assisting MOCS to examine trends and social needs relating to families in the mountains, and the mid mountains in particular.

### **Support to Aboriginal projects and the Aboriginal community:**

**14<sup>th</sup> Annual Sharing the Journey Elders Lunch** was held on Wednesday 19<sup>th</sup> October 2011. 120 Elders from Blue Mountains and Plains (40% were Aboriginal Elders) were entertained by Aboriginal musician Col Hardy, the Jo Clancy-choreographed performance of 'Solid Rock' by Lawson PS students, and songs performed by the school choir and Rachel Hore's Daylight Choir. The hall was decorated with the beautiful artworks of Blake McHugh and Blue Mountains children's works from the Aboriginal Artists in Schools project. Table runners were produced from past lunch participants entries in the annual colouring competition the latter tradition being repeated this year with an artwork donated by Sebria from BMACRC. The event was MC'd by Lyn Bevington and Aunty Carol Cooper who interviewed the audience using a roving mic, adding information and much fun to the day. The Lunch is a partnership of MOCS, MMNC, Gilgai Aboriginal Corporation, Lawson Carers, BM Palliative Support Service, BM Food Services and Aboriginal Culture and Resource Centre.

Fifteen prefects from Katoomba High School set-up the hall, served the Elders morning tea and lunch and then packed up at the end of the day. Despite the last minute cancellations by two community volunteers the event mostly maintained the appearance of calm organization. Information stalls by Aboriginal Healthy for Life, Diabetes Australia, EWON and Sydney West Area Health Service were well received. The event is made possible by donations from Colless Foods, BM councilors Luchetti, Van der Kley and Clark, the raffle, entry cost and the Dept of Services, Tech & Admin.

### **Digital Reconciliation Promotion [facebook.com/BlueMountainsReconciliation](https://facebook.com/BlueMountainsReconciliation)**

MOCS new website and facebook presence have enabled a dynamic approach to community building in the area of Aboriginal reconciliation and related events in the Blue Mountains. Our Community Building web menu includes links to known reconciliation groups in the Mountains, [mocs.org.au/Wordpress/community-building/working-in-an-aboriginal-place/](http://mocs.org.au/Wordpress/community-building/working-in-an-aboriginal-place/). The facebook page directs traffic to the webpage, as well as promoting

our events and others in the community that relate to reconciliation or are sent to us to share relating to Aboriginal services and events. Interest in the page is growing (427 page views in the week 24-30 July).

Our publications, *Aunty Joan Cooper: through the front door, Fun and Games in Gundungurra* and *Sing You Brave People* continue to sell steadily both within the Blue Mountains and from orders outside the LGA. We reprinted 100 copies of the Aunty Joan Cooper book this year – now in its 5<sup>th</sup> edition.

### **2012 Aboriginal Artists in Blue Mountains Schools**

Close to four hundred Blue Mountains children in ten schools participated in the reconciliation project **2012 Aboriginal Artists in Blue Mountains Schools**. Six Aboriginal artists visited the schools to share stories and their work, and to inspire the students to create works on this year's reconciliation theme "Our Place". Students gained insight into Aboriginal history, culture, and connection to place, and learned new ways to express themselves.

The children's artworks were exhibited at the 'OUR PLACE Exhibition' at Lawson Public School Hall on Saturday, 31<sup>st</sup> March 2012. This year's Aboriginal artists included Dianne Ussher, Elly Chatfield, Graham King, Janelle Randall-Court, Jo Clancy and Leanne Tobin. The artists were accompanied by members of Blue Mountains People for Reconciliation, who also assisted with funding the project. The project was again guided by Darug & Gundungurra Elder Aunty Carol Cooper, and auspiced by MOCS.

The Blue Mountains Aboriginal Culture & Resource Centre joined the organising team and was the major sponsor for 2012. Four TAFE Community Services students Heather Smith, Emma Williams, Joycelyn Pickering and Patricia Fitzgerald and their teacher, Kay Bazley, worked tirelessly to assist the project.



The 2012 participating schools were Mt Victoria, Springwood, Lawson, Hazelbrook, Katoomba and Katoomba North Primary Schools, Korowal School, Kindlehill School and Katoomba and Springwood High Schools.



Most of the artworks on show were then entered into the 2012 NSW Schools Reconciliation Challenge in Sydney. Winning and highly commended works were shown at the Australian Museum in Sydney. Four Blue Mountains schools were represented in the 23 highly commended works and on 1<sup>st</sup> June 2012 Aunty Carol conducted a celebration in Country to celebrate the achievement of the schools and children. Three of these were part of the 2012 AABMS project.

### **Collaborative community projects and support to other services:**

**Paint the Blue REaD - the Blue Mountains early learning community project**  
[facebook.com/PaintBlueREaD](https://www.facebook.com/PaintBlueREaD) <http://www.mocs.org.au/Wordpress/early-learning-paint-the-blue-read/>

Building on three developmental years, PTBR conducted an evaluation and strategic planning process. 2011 Reading Week was held in National Literacy and Numeracy Week in late August – early September. Our ability to support the story time events that occurred in villages across the BM was greatly enhanced by a \$1,000 donation from Bendigo Bank which allowed the remodeling of the head of our original Billy Booksie costume.

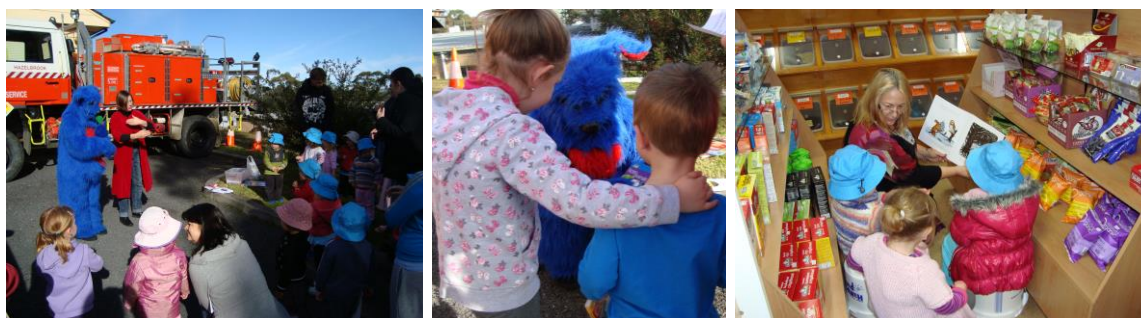
Convened by MOCS, the 2011 community committee included representation [village coordinators] from businesses [such as Megalong Books, Pinerolo Children's Book Cottage] community organisations [Rotary Lower Mountains], the BMCC library, and a myriad of neighbourhood and children's services organisations across the mountains. Readings occurred during Reading Week in over 30 shops in eight villages throughout the mountains. In addition PTBR member Geoff Vallance, from Lower Mts Rotary, assisted in the organisation of the Reading Mascots Convention held at Penrith. Playgroups, preschools and schools were invited to participate along with the general public, and Billie Booksie attended [along with 10 other reading mascots] the public reading event at Panther's Stadium. The number of children and families attending the events is impossible to quantify exactly, with some including only a small number but with most involving 20 – 40 children & families. Upwards of 300 Blue Mountains children and families would have participated in a reading event. Most had a close encounter with the Booksies and their important message, in addition to the many attending the convention.

In 2012, the National Year of Reading, to strengthen the core message and reach, it was decided to bring forward 2012 Blue Mountains Reading Week to 18<sup>th</sup> – 23<sup>rd</sup> of June, to culminate in the Winter Magic Festival (40,000 crowd) and to leave ample time for a second PTBR major project in the National Year of Reading. Other developments include:

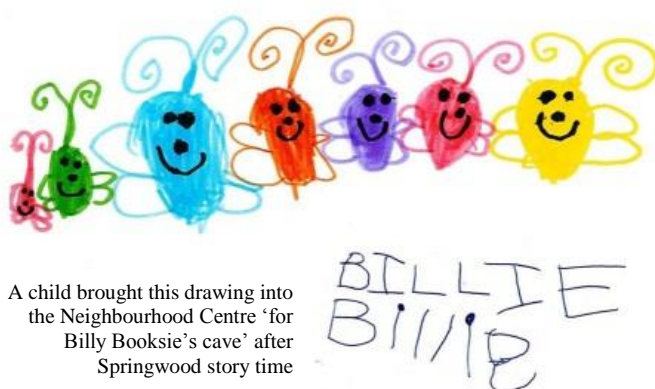
- PTBR adopted a pilot structure comprising local teams and a strategic hub. Five Local Area Committees (LACS) were established to maximise targeting and coordination of local Reading Week story times (Upper Mountains, Katoomba, Leura, Mid-Mountains, Lower Mountains);
- The web and facebook pages were enhanced, and trial online and phone meetings raised meeting participation and helped reduce travel and printing;
- To extend the impact of Reading Week we delivered the early learning message via business card / wallet-calendar product. In addition to key messages the card prompts rhymes and baby games, and provides portal details for the web & facebook

pages (510 people reached during Reading Week). Certificates for helpers and businesses were developed for distribution by local area coordinators aim to retain the memory of Reading Week in local shops and offices.

PTBR penetration has at least doubled on 2011 in terms of number of locations and participants. Story time events occurred in 84 locations across the villages mostly in shops, parks and business centres, and including community centres and preschools. Songs, nursery rhymes and picture book stories were shared with the children, and the Booksies visited each centre (with the exception of Winmalee, visited by Rooby Roo).



Over 800 children and 190 parents/carers/volunteers attended the story time events across the mountains. Notable were the introduction of three simultaneous story time trails at Katoomba which were enjoyed by 130 small children and many parents. This was the result of – unprecedented coordination and participation for this priority town and a credit to Diane Moore and the Katoomba team. The Katoomba events are likely to be split over two days next year. At Wentworth Falls (absent from the RW schedule last year) over 30 babies, toddlers and primary children participated, with over 15 parents and carers.



A child brought this drawing into the Neighbourhood Centre 'for Billy Booksie's cave' after Springwood story time

PTBR depends on the assistance of our hard working village coordinators, Lower Mts Rotary, Glenbrook Public, Hazelbrook Public and Korowal Schools, TAFE Community Services, as well as the emergency services and Megalong Books, the Big Red Bus and numerous other shops and businesses, and survives on community

donations. Thanks to all who keep this lovely blue furry creature growing! Look out for the next development as the Booksie toy campaign rolls out over the remaining months of the National Year of Reading. PTBR is part of the Stronger Families Alliance *Creating Child-friendly Communities* plan and is auspiced by MOCS.

#### **Raising Awareness of Mental Health Issues** [facebook.com/RAMHIBlueMountains](https://www.facebook.com/RAMHIBlueMountains)

MOCS continues to participate in monthly RAMHI meetings and Anne has worked with the RAMHI Organising Group, supporting MCRN's role in facilitating RAMHI, until June

2012. MOCS established the RAMHI Facebook page, which over the course of the year has grown exponentially (660 visits in the week 24-30 July) promoting mental health initiatives and information for the Blue Mountains community.

MOCS coordinated Mental Health Month Calendar and Gazette feature the BM Gazette, and organized a Mental Health Expo for families at Lawson Public School to coincide the Blue Fringe exhibition. Almost all services invited attended the day including Gunedoo, MYST, KHC Child & Family Health, beyond blue (resources), GP Network, Moshka Children, Child & Adolescent Mental Health Service of Nepean BM Local Health, C&A Development Unit of BMDAM Hospital, Katoomba Mental Health Team, One in Five, Forgotten Australians, MMNC and Springwood Health Centre. Community support was provided by Lawson Public School, Rotary, the Blue Fringe Committee and TAFE and many businesses displayed promotional notices. About 25 workers took the chance to learn about each other's services, when not meeting with the 50 adults and 40 children enjoying the Fun Day. The theme was *Off to a Flying Start*, and all feedback from services and public indicated the day was useful and enjoyable.

**Mountains Multicultural Interagency (MMI)** [facebook.com/InclusiveBlueMountains](https://facebook.com/InclusiveBlueMountains)

MOCS continues to attend bimonthly meetings, and in the past 12 months has coordinated the Harmony Day Calendar and BM Gazette feature and assisted with the organization of the major Mid Mountains performance event for Harmony Week. MOCS established and maintains the facebook page of the MMI which is growing (215 people reached 24-30 July).

*Anne Fitzgerald - Community Development Worker*

## *Children's Community Development*

### **Mid Mountains Community Hub**

I took over the coordination of the Mid Mountains Community Hub in July 2011. This has meant a shift in my geographical focus; my work is now almost entirely centred in the Mid Mountains (from Bullaburra to Woodford). It has been exciting and challenging establishing the Hub. The transition to the Hub from the Mid Mountains Happenings Project has been smooth in terms of what we have been able to continue to offer the community – all be it with a greatly reduced budget. The reduced funds have meant partnering up a lot more with other services and volunteers to be able to run things like courses, workshops and fun days, which has been working well.

I commenced by forming a **Steering Committee** for the Hub made up from interested stakeholders such as Principals from local schools, the Mid Mountains Neighbourhood Centre (MMNC), Community Health, local preschools, Family Day Care and parent representatives. The committee has been well attended and provides the Hub with ideas and practical support. Other **consultation with the local community** about what they would like from the Hub, has occurred through the September Fun Day and the

Supported Playgroups. This has informed the activities offered such as parent education courses, parenting courses and art/craft workshops.

A highlight has been the development and launch of the **Lawson Community Room** located in Lawson Public School. The room was made possible by the support of the Principal at Lawson, Delphine Annett. The launch was on February 21<sup>st</sup> and was attended by approximately 35 people from a variety of local services and representatives from the Department of Education and Community, the Department of Family and Community, Local Government and State and Federal Members. Aunty Carol Cooper welcomed us to Country, the Lawson School Dancers provided entertainment and after some short speeches everyone enjoyed a morning tea and introduction to the community room.



First term of 2012 **the Lawson Community Room was used each Tuesday by the Hub as a drop in for parents and to introduce them to different local services**, such as Lawson Community Preschool, Family Day Care, the local Early Childhood Nurse and the Child and Adolescent Development Unit. 13 parents in all came along to these mornings.

In second term 2012 **the Hub ran workshops in the Community Room** such as African Beading, Healthy Lunch Box, Winter Magic Costume Making, Knitting, Harmony Day morning tea and a Reconciliation Week film and discussion. 38 people attended these in all and a few parents in particular now regularly drop-in to the room. The Lawson Community Room is a great asset to the school, can be used by suitable non-profit groups and is perfectly situated with a child care room adjacent.

Other Hub highlights have been the **adult education courses** that MOCS has partnered with TAFE Outreach to run. The *Parent Mentoring* course was run as a pilot from August to October 2011, 9 parents completed and went on to volunteer in a variety of capacities including two joining the MOCS Management Committee. I presented 2 of the segments and enjoyed engaging with this enthusiastic and committed group. Other TAFE Outreach courses the Hub has offered are an Accredited *First Aid* course over 5 weeks with 10 adults completing; and a *Native Gardening* course over 8 weeks with 9 adults completing. **Parenting courses** run have been: 3 *Triple P* Seminars in partnership with Northcott at Hazelbrook Public School (10 attended); *Kids and their Feelings* seminar (11 attended) and *Kids and Confidence* 4 session course (6 attended) both in partnership with Gateway and held at Lawson Public School; *Enjoying Your Toddler* 5 session course (5 attended) in partnership with Community Health held at the Bungarrabee Centre.

With the new funding arrangements the Hub can offer two **Holiday Fun Days** per year. A fun day was held in Bullaburra in September 2011 in partnership with MMNC, Bullaburra RFS, the Bullaburra Township Committee and Historical Society. 110 people came along despite the clouds and drizzle to enjoy exploring the Fire Engine, BBQ lunch, circus skills, craft and Billy Booksie fun. The Woodford fun day was held in April 2012, it rained heavily so our new partner, the Woodford Presbyterian Church allowed the event to be held in their Church Hall. MMNC provided woodwork activities for kids, a parent lead an Indian Dance workshop, the Church provided face painting and Billy Booksie and volunteer reader provided stories and songs. 75 people attended despite the rain.





As part of the hub activities I coordinated **Hazelbrook Reading Week** in August 2011 and June 2012. These were both very successful with reading in 10 and 12 shops respectively by MOCS and volunteer readers with Billy Booksie doing rhymes. Hazelwood Child Care Centre attended both years and in 2012 Hazelbrook Public School students visited both Possum and KU preschools at the Bungarrabee Centre to read to the children. In 2012 the Hazelbrook RFS brought their Fire engine to Hazelbrook shops for the children to see. 50 attended in 2011 and 100 in 2012.



**Family bush walks** – 2 Aboriginal interpretive bushwalks to Horseshoe Falls have been held in the past year with NPWS Discovery Rangers. One was in October 2011 with Chris Tobin and Janelle Randall-Court (attended by 8) and the other in May 2012 with David King and Elly Chatfield (attended by 40). Both were possible with funding from Blue Mountains City Council (BMCC) and introduced a number of families to this lovely bushwalk.

### Parenting Young

I continue in my role supporting the Parenting Young Project by attending the **playgroup** every 2 weeks to talk to parents about any child development issues they may have and help provide the children's activities. As Sophie will report it is an ever evolving group with some recent graduations and new young parents joining. As a result of the young parents being familiar with me I have been able to encourage some of them to come along to Hub activities such as Fun Days and parenting courses, which is a great way to get them to use mainstream services.

I also helped Sophie to put on the **3 day Retreat** at Camp Fletcher in Hazelbrook in September 2011. 11 parents and 18 children attended and enjoyed the many activities such as bushwalks, African dancing, singing workshops, a mindfulness session, a pampering session and a felting workshop. They also enjoyed time to relax and enjoy the natural environment and good weather, everyone getting to know each other better.



### Coalition Against Violence and Abuse (CAVA)

I regularly attend the CAVA meetings and am part of the Child Protection Week subcommittee. In 2011 for **Child Protection Week** we held a community breakfast at Blackheath Public School in September with the support of Upper Mountains Rotary. It was attended by all of the students (about 350) and a number of parents.



### Paint the Blue Read

As well as coordinating Reading Week for Hazelbrook I also helped Anne Fitzgerald to present **Winter Tales** in partnership with West Words and BMCC in August 2011. Winter Tales was a free Children's Literature Festival held at Wentworth Falls School of Arts with children's authors Tobhy Riddle, Emily Rodda and Louise Pfanner who ran workshops, and Lee Castledine who told stories. It was very popular with 68 children and their parents attending. Many families reported that they appreciated that this event was free as they were unable to afford other children's literature events that cost money.

### Blue Mountains Child and Family Forum

In 2012 I started to officially convene the Blue Mountains Child and Family Forum for BMCC. The Forum meets 4 times per year and involves all children and family services operating in the Blue Mountains such as Pre-Schools & Child Care Centres, Family Support Services, Out of School Hours care services, community workers and anyone else with an interest in children and families. The Forum usually has guest speakers on relevant topics and time devoted to information share. It is an excellent professional development and networking opportunity for the sector.

*Liz Smith*

*Children's Community Development Worker*



### *Parenting Young Project*

Parenting Young has had **consistent attendance** of around twelve families per week during this reporting period.

We have had many new editions to the Parenting Young Family both through births and new referrals. We have also seen the working party grow to include Danae Aimes from Wimlah, Cathy Dee and Alyssa Cassidy from Community Health.

I have had the opportunity to visit Katoomba Hospital Maternity Unit and the Mid Mountains Youth Centre during the year. These visits have enabled our organisations to work more closely together to support young parents and have resulted in an increase of successful referrals to the Playgroup.

The **housing crisis** in the Blue Mountains has been keenly felt by many Parenting Young families. In response Blue Mountains Youth Accommodation Support Service have been making more frequent visits to the group and have been involved in supporting several Parenting Young families to find and retain affordable housing.

We had free **child restraint and seat belt safety inspections** provided at the group and a number of guest speakers facilitating discussions on a range of topics including: women's health, birth control, domestic violence, and early childhood development.



In September of 2011 Parenting Young held a **three day retreat at Camp Fletcher in Hazelbrook**. Holding the retreat in the local area had many benefits; it was significantly more affordable, there was less travel involved which allowed much greater flexibility for workers and families. It also meant we were able to have a number of volunteers and Parent Mentors providing massage and beauty treatments, which was greatly appreciated by the very hard working mothers at the retreat.

Parenting Young created artworks for the *Arty Bra* and the *Waste to Art* exhibitions.

In response to parent feedback from previous years this year's program allowed much more opportunity for parents to spend time with their children. The highlight of the retreat for many families (and many workers) was the opportunity to explore the bush. Families embarked on a number of bushwalks with children of all ages, discovering the wonders of our native environment.



In September 2011 the **Blaxland Young Parents Group** had to be closed due to poor attendance. All parents from that group were invited to attend the Parenting Young Retreat and were encouraged to come to the Friday Playgroup at Lawson.

At the end of Term two this year we said **good bye** to a number of Parenting Young families who had been attending the playgroup for many years. These Parents now over 25 years have become important role models for new parents at the group.

*Sophie Corbett*  
*Parenting Young Facilitator*

## *Brighter Futures*

The Brighter Futures group work program “Time Together” run by myself and Kerry Steele of Gateway Family Services offered a range of groups this year including a number of craft groups/ playgroups aimed at reducing social isolation and addressing parenting issues, a walking group, “Magnifying Hope” and a group on healthy eating for school aged children. We also took families on a number of outings to Family Fundays, the Variety Club show, the Australian Museum and several trips to rock climbing centres. This years’ Christmas Party was a fantastic success with perfect weather and a visit from the local Ruby Bloomers circus team.



This year Blue Mountains and Hawkesbury Brighter Futures teams held a combined **three day Camp** for twelve families at Vision Valley in April 2012. The Camp was aimed at providing an opportunity for families to spend time together away from the pressures of everyday life. There was an emphasis on simple affordable activities that could be replicated at home.

Parents attended a **workshop** which explored ways of maintaining their own energy levels and good mental health in the context of busy and challenging family lives. The feedback from this session was very positive and many of the activities throughout the camp reinforced the simple but powerful messages from the workshop.

This we have begun to become more involved with the many **Community Hubs** in order to provide parenting groups to the families in both Programs. Working with the Hubs provides a perfect opportunity to connect vulnerable families with the more mainstream services that they will be able to access once they leave Brighter Futures.

In term two 2012 we ran the “**Friends for Life**” Program for seven children aged between seven and nine years. “Friends for Life” is an evidence based program aimed at fighting childhood anxiety and building resilience in children, it is the only one recognised by the World Health Organisation.

**2011-2012 has been a time of change** for the Brighter Futures Program state wide with the introduction of the Strengthening Families Program. Nepean Wesley is now doing the Intake assessment for all Brighter Futures referrals. FaCS no longer provide case workers to the Brighter Futures Program, it is planned that they will provide casework to the families in the Strengthening Families Program. Brighter Futures Group workers will provide groups and parenting support to the Strengthening Families Program as well as the Brighter Futures Program.

These changes have meant that for much of this reporting period, the group of families Kerry Steele and I have been working with has been reduced.

*Sophie Corbett, Brighter Futures Worker*



## *Mountain Mobile Minders*

MMM provides quality low cost childcare to a range of service providers within the Blue Mountains community. The flexibility and mobility of the service enables us to support parents and carers to access a range of community education groups, meetings, playgroups and events.

In the past year the dedicated MMM team continued to provide child care throughout the mountains from Glenbrook to Mt Victoria in a variety of venues ranging from community halls, parks and schools. Other service providers give frequent feedback that they would not be able to achieve the attendance they attract and highlight the valuable contribution that MMM makes to the families of the Blue Mountains Community.

MMM provided childcare to 18 different community groups and organizations, with between 85 to 106 sessions per term as well as supporting other MOCS services, such as the Mid Mountains Hub playgroups and Fun Mornings, Parenting Young Playgroup and BMOCCS.

MMM continues to provide childcare to many longstanding clients such as Gateway Family Service, Nepean / Blue Mountains Community Health, Brighter Futures, Gunedoo Child and Family Trauma Counseling, Connect Child and Family Services, GP Network, Blackheath Area Neighbourhood Centre and Katoomba Neighbourhood Centre. New clients this past year have included Northcott Disability Service, Blue Gum Cottage and The Conservation Society Blue Mountains.

MMM continues to maintain around 8 - 10 staff members, Danielle Wilding Forbes and myself are permanent and from our casual staff team Shelley O'Toole has been with MMM for over five years, Nadia Ireland and Meg Grunsell for over four years and Tanya Clarke for over 2 years. This year saw Belinda Fielding who has been with us for the past three years move on to further her studies and work in nursing, Danni Allen moved on to permanent work within the childcare industry. Tess White and Jackie Gilchrest joined us this year and have made a wonderful addition to the MMM team.

As new venues are added each year, venue safety checks are completed on a regular basis enabling MMM to provide a safe environment for childcare workers and the children and families they are working with. MMM workers have embraced the changes that were made to sign-in and venue safety check forms and procedures and continue to be conscientious of Worker Health and Safety issues.

All casual staff have attended two in-house training sessions with staff from BMOCCS, on Managing Behaviors and Early Literacy and Story Telling. The MMM team enjoyed the opportunity to learn and share ideas with other staff and felt more a part of the MOCS team. Danielle and I have both had the opportunity to attend training courses this year on Raising Resilient Children, Counseling on the Run, Creating Child Friendly Cities, Story Telling and Child Protection. I continue to attend the quarterly Mobile Children's Services Association training and meetings.





I would like to thank the MMM team for their flexibility, sensitivity and professionalism in supporting children and their families. This being evident in the positive feedback received from service providers and families. Their professional conduct largely contributing to MMM's excellent reputation in the Blue Mountains community.

*Jane Marshall*  
MMM Facilitator



## *Blue Mountains Occasional Child Care Service*

BMOCCS is an Occasional Child Care Service in the Blue Mountains providing families with a quality early years learning program in Blaxland, Winmalee, Lawson and Blackheath. We provide a unique service that can support a wide variety of families' early childhood needs. We recognise that at times, families have child care needs that are 'outside the box' from what is traditionally offered with access needs such as:

- ~ An early childhood program with short hours
- ~ An extra day of preschool
- ~ An early childhood program while on a waiting list
- ~ Occasional care while a parent attends an appointment or commences job search
- ~ Occasional care while a parent attends a short course or distance study
- ~ Parent, Grandparent, FDC Educator or Nanny relief day
- ~ Or just a magical, fun day each week where children make friends and experience the wonder of childhood learning with a team of qualified EC educators.



BMOCCS is a licensed Service that is regulated and funded through the government Department of Human Services. We are a community based, inclusive service for children aged 0-6 years. Our program of activities and creative projects aim to engage children in learning activities that develop creativity, exploration, problem solving, emerging literacy and numeracy, construction as well as social and emotional competence. We use the Early Years Learning Framework (EYLF) to guide our curriculum. This is the nationally recognised framework for ALL early childhood services that provide a licensed and developmentally enriching program for children 'pre the school years'. This year 140 families across the mountains accessed our service. Occasional care was very popular with families of toddlers and pre-schools with 100% usage in the toddler groups and 80% usage from the pre-schooler groups and about 60% usage from the infants groups.

Our educators have a talent for providing fun creative projects that are not only socially enriching but also teach essential skills and knowledge for children's lifelong learning. We have completed some exciting projects this financial year such as, our amazing 'Box Christmas Tree', which was displayed at the Braemar Gallery along with other student's entries in 'Waste to Art'. Our entry in 'Waste to Art' was unique as the BMOCCS children were the youngest students to exhibit. This project taught the children concepts such as: recycling, collaboration, art and design and a sense of diverse cultural Christmas customs.



This year our projects have included: cooking together; dinosaur and shark exploration; water conservation; farming and produce play including making a cow milking simulator; a theatrical Chinese dragon for Chinese New Year, as well as exploring cultural dance and stories... And this is just to name a few. The children celebrated the end of year with a cultural lunchtime party and a special visit from Santa.



**Our team of educators include:**

- Kerry Knibbs Early Childhood Teacher and Coordinator
- Nelda King Diploma Trained Early Childhood Educator
- Simone Witherow Certificate 111 in Children's Services
- Teresa Harvey Casual  
Jackie Gilchrest Casual



Kerry, Simone and Nelda

Our educators attended the MCSA Mobile Meet training in September 2011 with a focus for sharing concepts from the EYLF. We also attended Aspect training and 'Traffic Jam in my Brain', sensory processing approach. We have completed in house training in the area of promoting emerging literacy, storytelling and community partners. We are looking forward to attending sign language training in September 2012, as we are committed to inclusion and supporting children and families that have additional needs within BMOCCS.

BMOCCS is a not-for-profit service and endeavors to keep fees low. Fundraising is relied on to help us with much needed resources. Funds are raised through Body Shop and Christmas toy catalogues and a Christmas raffle with parent support. We were successful in gaining SCAN and ISP funding to help support children with additional needs within our service. We have been granted \$6,187.00 from the 'Community Builders Funding Program', which has allowed us to buy and replace our old carpet mats and buy some much, need sunshades. We were pleased to receive the 'First Funding Teacher Costs Contribution Scheme' to go toward Teacher Costs.

We thank Gateway, FDC, Euroka and BMC Libraries for their helped to create better awareness of our Blaxland service in the lower mountains area. We have many new families attending Blaxland that were pleased to learn of our service. We thank all of our venue managers for their generous support of our program. This includes the team at Blaxland FDC, Mick Barrett at MMNC, Mark Armstrong at Winmalee Presbyterian Church and the team at Blackheath Baptist Church. We have a wonderful team of educators at BMOCCS whom I would like to thank for their skill, warmth and professionalism. We have had such genuine appreciation expressed by families for the care and education that we provide. We would like to also thank Lyn Bevington (MOCS Manager) and the friendly team at MOCS whom are very supportive of our program.

BMOCCS looks forward to supporting families with occasional care needs and also bringing wonder and joy to each child's early childhood learning experience in the new financial year.

*Kerry Knibbs*  
*BMOCCS Coordinator*

## *Financial Report*

MOCS (Mountains Outreach Community Service Inc) and its projects are funded by the Department of Human Services, Family and Community services through the Community Builders, Children's Services Program and Brighter Futures Early Intervention.

Mountains Mobile Minders (MMM) received \$106776.51 CSP funding and Blue Mountains Occasional Childcare Service (BMOCCS) received \$83187.52 CSP funding as well as \$32,000 CSP for early childhood teacher costs to be expended over a 4 year period. Brighter Futures received \$45902.36 Wesley funding which was fully expended. MOCS received \$186241.52 CB Renewable funding and show a small profit of \$1107.58.

BMOCCS also received \$9700.00 from ACCESS – SCAN (Support for Children with Additional Needs) Program and \$2513.50 DET funding which enabled us to have an additional worker to support children with special needs, specific staff training and to buy equipment. MOCS received \$6187 Community Building Partnership Program funding and \$3381.32 has been carried forward to be expended by March 2013.

MOCS also received \$1500.00 from Australian Apprenticeship as incentive payments for traineeships and other staff incentives to the value of \$3841.23. These funds were set aside as a provision for additional staffing/training needs.

Blue Mountains City Council donated \$1500 to BMOCCS for purchase of toys. \$1200 to Paint the Blue Re(a)d at the request of Clr Mays, Clr Clark, Clr McLaren. \$850 was donated to the Elders Lunch at the request of Councilors Clark, Luchetti and Van der Kley. \$150 was given at the request of Clr Clark to purchase toys for Mid Mountains Community Hub. Another \$400 was received for our Children's Week Activity.

Donations of \$100 were received from each of the following schools: Kindle Hill School, Korowal, Springwood, Lawson, Katoomba, Katoomba North, Hazelbrook and Mt Victoria Public Schools and this supported the Schools Reconciliation Challenge.

Our total current year surplus is \$1640.65.

Adequate funds have been set aside to cover provisions for Long Service Leave, Annual Leave, and Personal Leave accruals.

Congratulations to the MOCS team for continuing to be such a positive force for children and families in the Blue Mountains community.

*Elaine Cameron*  
*Financial Administrator*

*William Tomiczek & Associates*

public accountant, company auditor and  
registered tax agent

ABN 55 097 263 122

William Tomiczek  
Dip. Acc., F.C.A., F.T.A.

Liability limited by a scheme approved under Professional Standards Legislation

ph 02 4739 2948

mobile 0402 097 431

fax 02 4739 2057

66 Emu Plains Road

Mt Riverview

NSW 2774

**AUDIT CERTIFICATE**

Standard full Audit Certificate by a qualified accountant in respect of  
Community Funded Organisations

I, William Tomiczek, of 66 Emu Plains Road, Mt Riverview NSW 2774, being a qualified accountant within the meaning of the Community Funded Program, do hereby certify that I have examined the books and financial records of Mountain Outreach Community Service Inc.

In my opinion the financial statements present fairly the financial position of the organisation, and the results of its operations for the year ended 30 June 2012 are in accordance with the Australian Accounting Standards.

Signature



William Tomiczek

Date

2/8/2012

Auditors Qualification: Registered Company Auditor  
No. 1425

Notes to and forming part of the accounts of Mountain Outreach Community Service Inc. for the year ended 30 June 2012.

We have satisfied ourselves that:

- Establishment of all reserves/provisions is justified and represent funds set aside for LONG SERVICE LEAVE and ANNUAL LEAVE.
- Payments to associated and/or affiliated bodies have been adequately disclosed.

Signature



William Tomiczek

Date

2/8/2012

**MOUNTAINS OUTREACH COMMUNITY SERVICE INC.**  
**Statement by Members of the Committee**  
**For the year ended 30 June 2012**

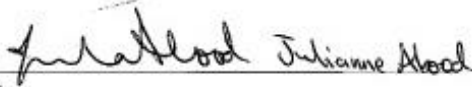
---

The Committee has determined that the association is not a reporting entity and that this special purpose financial report should be prepared in accordance with the accounting policies outlined in Note 1 to the financial statements.

In the opinion of the Committee the Income and Expenditure Statement, Statement of Financial Position, and Notes to the Financial Statements:

1. **Presents fairly the financial position of MOUNTAINS OUTREACH COMMUNITY SERVICE INC. as at 30 June 2012 and its performance for the year ended on that date.**
2. **At the date of this statement, there are reasonable grounds to believe that the association will be able to pay its debts as and when they fall due.**

This statement is made in accordance with a resolution of the Committee and is signed for and on behalf of the Committee by:

  
President

  
Treasurer

**MOUNTAINS OUTREACH COMMUNITY SERVICE INC.**  
**Notes to the Financial Statements**  
**For the year ended 30 June 2012**

---

**Note 1: Summary of Significant Accounting Policies**

This financial report is a special purpose financial report prepared in order to satisfy the financial reporting requirements of the Associations Incorporations Act of New South Wales. The committee has determined that the association is not a reporting entity.

The financial report has been prepared on an accruals basis and is based on historical costs and does not take into account changing money values or, except where specifically stated, current valuations of non-current assets.

The following significant accounting policies, which are consistent with the previous period unless otherwise stated, have been adopted in the preparation of this financial report.

**(a) Cash and Cash Equivalents**

Cash and cash equivalents include cash on hand, deposits held at call with banks, and other short-term highly liquid investments with original maturities of three months or less.

**(b) Revenue and Other Income**

Revenue is measured at the fair value of the consideration received or receivable after taking into account any trade discounts and volume rebates allowed. For this purpose, deferred consideration is not discounted to present values when recognising revenue.

Interest revenue is recognised using the effective interest rate method, which for floating rate financial assets is the rate inherent in the instrument. Dividend revenue is recognised when the right to receive a dividend has been established.

Grant and donation income is recognised when the entity obtains control over the funds, which is generally at the time of receipt.

All revenue is stated net of the amount of goods and services tax (GST).

**(c) Goods and Services Tax (GST)**

Revenues, expenses and assets are recognised net of the amount of GST, except where the amount of GST incurred is not recoverable from the Tax Office. In these circumstances, the GST is recognised as part of the cost of acquisition of the asset or as part of an item of the expense. Receivables and payables in the assets and liabilities statement are shown inclusive of GST.



**MOUNTAINS OUTREACH COMMUNITY SERVICE INC.**  
**Independent Auditor's Report to the Members**

---

**Report on the Financial Report**

We have audited the accompanying financial report, being a special purpose financial report, of MOUNTAINS OUTREACH COMMUNITY SERVICE INC. (the association), which comprises the Statement by Members of the Committee, Income and Expenditure Statement, Balance Sheet, notes comprising a summary of significant accounting policies and other explanatory notes for the financial year ended 30 June 2012.

**Committee's Responsibility for the Financial Report**

The committee of MOUNTAINS OUTREACH COMMUNITY SERVICE INC. are responsible for the preparation of the financial report and have determined that the basis of preparation described in Note 1, is appropriate to meet the requirements of the Associations Incorporation Act of New South Wales 2009 and is appropriate to meet the needs of the members. The committee's responsibilities also includes such internal control as the committee determine is necessary to enable the preparation of a financial report that is free from material misstatement, whether due to fraud or error.

**Auditor's Responsibility**

Our responsibility is to express an opinion on the financial report based on our audit. We have conducted our audit in accordance with Australian Auditing Standards. Those Standards require that we comply with relevant ethical requirements relating to audit engagements and plan and perform the audit to obtain reasonable assurance whether the financial report is free from material misstatement.

An audit involves performing procedures to obtain audit evidence about the amounts and disclosures in the financial report. The procedures selected depend on the auditor's judgement, including the assessment of the risks of material misstatement of the financial report, whether due to fraud or error. In making those risk assessments, the auditor considers internal control relevant to the association's preparation of the financial report that gives a true and fair view, in order to design audit procedures that are appropriate in the circumstances, but not for the purpose of expressing an opinion on the effectiveness of the association's internal control. An audit also includes evaluating the appropriateness of accounting policies used and the reasonableness of accounting estimates made by the committee, as well as evaluating the overall presentation of the financial report.

We believe that the audit evidence we have obtained is sufficient and appropriate to provide a basis for our audit opinion.

**Auditor's Opinion**

In our opinion, the financial report presents fairly, in all material respects, the financial position of MOUNTAINS OUTREACH COMMUNITY SERVICE INC. as at 30 June 2012 and its financial performance for the year then ended in accordance with the accounting policies described in Note 1 to the financial statements, and the Associations Incorporation Act of New South Wales 2009.

**Basis of Accounting**

Without modifying our opinion, we draw attention to Note 1 to the financial report, which describes the basis of accounting. The financial report has been prepared to assist MOUNTAINS OUTREACH COMMUNITY SERVICE INC. to meet the requirements of the Associations Incorporation Act of New South Wales 2009. As a result, the financial report may not be suitable for another purpose.

Signed on 2 August, 2012:



William Tomiczek F.I.P.A., Registered Company Auditor 1425  
66 Emu Plains Rd Mt Riverview 2774

**Mountains Outreach Community Service Inc**

**Balance Sheet [Last Year Analysis]**

**June 2012**

	<b>This Year</b>	<b>Last Year</b>
<b>Assets</b>		
<b>Current Assets</b>		
Commonwealth Cheque Account	\$12,776.26	\$12,113.21
CBA Business Account	\$103,850.54	\$83,532.71
Fundraising Account	\$1,124.18	\$1,124.06
Debtors	\$115.39	\$260.00
Undeposited Funds	\$815.50	\$0.00
Petty Cash	\$350.00	\$450.00
Prepayments	\$8,525.00	\$0.00
Term Deposit Leave Provision	\$46,399.48	\$43,766.31
Term Deposit Replace Equipment	\$21,654.03	\$20,627.89
Term Deposit Van	\$18,449.39	\$17,402.39
GST Paid	\$4,024.88	\$2,723.45
<b>Total Current Assets</b>	<b>\$218,084.65</b>	<b>\$182,000.02</b>
<b>Property &amp; Equipment</b>		
Motor Vehicles Special Equip	\$3,820.00	\$3,820.00
Motor Vehicles Accum Dep	-\$3,820.00	-\$3,820.00
Furniture & Fixtures at Cost	\$24,546.03	\$24,546.03
Furniture & Fixtures Accum Dep	-\$22,284.98	-\$21,719.98
Computers & Printers	\$14,532.45	\$14,532.45
Computers & Printers Accum De	-\$14,532.45	-\$14,532.45
<b>Total Property &amp; Equipment</b>	<b>\$2,261.05</b>	<b>\$2,826.05</b>
<b>Total Assets</b>	<b>\$220,345.70</b>	<b>\$184,826.07</b>
<b>Liabilities</b>		
<b>Current Liabilities</b>		
Grants in Advance-BMOCCS	\$24,000.00	\$0.00
BMOCC Capital Grant	\$20,000.00	\$20,000.00
Provision - Van Replacement	\$7,800.00	\$7,800.00
Provision - Building Maint	\$4,000.00	\$4,000.00
Provision - Replace Equipment	\$15,374.19	\$15,374.19
Provision - MM Playgroups	\$2,649.85	\$1,552.15
Provision - Unpaid Venue Hire	\$1,170.00	\$781.36
Provision - PY Retreat	\$5,564.03	\$8,732.43
Provision - MOCS Publications	\$2,866.61	\$2,821.88
Provision - Elders Lunch	\$2,918.75	\$2,991.60
<b>Total Current Liabilities</b>	<b>\$86,343.43</b>	<b>\$64,053.61</b>
<b>Payroll Liabilities</b>		
PAYG Withholding Tax	\$3,242.45	\$7,137.19
GST Collected	\$16,089.34	\$10,793.94
GST Collected Adjustment A/c	\$0.00	\$25.82
Provision - Long Service Leave	\$16,604.43	\$13,253.42
Provision - Annual Leave	\$33,433.30	\$23,937.42
Provision for Personal Leave	\$37,357.00	\$27,834.22
Superannuation Payable	\$0.00	\$3,643.69
Provision - Staffing Funds	\$11,841.23	\$6,500.00
Union Fees Payable	\$0.00	\$58.80
One Off funds held til next yr	\$3,381.32	\$8,740.91
CB funds held till next year	\$0.00	\$10,217.45
CBPP funds held til next year	\$4,865.22	\$3,082.27
<b>Total Payroll Liabilities</b>	<b>\$126,814.29</b>	<b>\$115,225.13</b>
<b>Total Liabilities</b>	<b>\$213,157.72</b>	<b>\$179,278.74</b>
<b>Net Assets</b>	<b>\$7,187.98</b>	<b>\$5,547.33</b>
<b>Equity</b>		
MOCS Equity	\$5,547.33	\$5,363.02
Current Year Surplus/Deficit	\$1,640.65	\$184.31
<b>Total Equity</b>	<b>\$7,187.98</b>	<b>\$5,547.33</b>

**Mountains Outreach Community Service Inc**

**Profit & Loss [Last Year Analysis]**

**July 2011 through June 2012**

	<b>This Year</b>	<b>Last Year</b>
Income		
DHS CSGP Funding - MOCS	\$186,241.52	\$166,460.02
BMCC Community Donations	\$3,100.00	\$2,000.00
DHS CS Funding - BMOCCS	\$83,187.52	\$81,111.08
DHS CS Funding- MMM	\$106,776.51	\$104,111.26
Workers Compensation Claim	\$400.00	\$535.64
BMOCCS EC Teacher Funding	\$8,000.00	\$0.00
PY FFP Funding	\$0.00	\$16,838.71
DHS-One-Off Transition Funding	\$5,359.59	\$12,000.00
Brighter Futures - EI Funding	\$45,902.36	\$45,902.35
BF - Retreat Funding	\$3,747.74	\$0.00
ACCESS Funding	\$9,700.00	\$4,885.00
DET Traineeship Funding	\$0.00	\$4,000.00
DET Early C'hood Teacher Funds	\$2,513.50	\$0.00
Bank Interest	\$6,323.19	\$6,410.74
Donations	\$1,975.39	\$1,933.00
Elders Lunch Donations	\$1,777.49	\$1,507.61
Service Management Levy	\$19,858.73	\$27,326.00
Reimburse MOCS Worker Costs	\$2,750.00	\$1,575.00
Reimburse Project Expenses	\$816.82	\$400.00
Contribution to Van Expenses	\$3,000.00	\$3,124.00
MOCS Membership Fees	\$22.00	\$23.00
Photocopying Contributions	\$1,777.73	\$1,730.00
PY Retreat Funding - Provision	\$3,168.40	\$0.00
MMH Project FFP Funding	\$0.00	\$39,512.28
Funds carried from last year	\$10,217.45	\$0.00
MMM Service Fees	\$11,140.65	\$15,695.56
CBPP - Funding	\$4,404.05	\$6,735.00
BMOCCS Service fees	\$37,783.00	\$34,109.85
Reimbursement of Costs	\$0.00	\$181.82
Total Income	\$559,943.64	\$578,107.92
Cost of Sales		
Gross Profit	\$559,943.64	\$578,107.92
Expenses		
Staff Costs		
Wages & Salaries	\$325,863.68	\$326,576.75
Relief Wages	\$36,687.17	\$35,774.66
Staff Wages BF	\$1,159.99	\$0.00
3 Salary On-costs	\$749.54	\$0.00
Annual Leave Provision	\$9,495.88	-\$3,824.54
Personal Leave Provision	\$9,522.78	\$9,340.18
LSL Provision	\$3,351.01	-\$582.45
Staff Training	\$3,292.45	\$7,010.37
Superannuation	\$31,266.68	\$31,217.24
Workers Compensation	\$11,376.37	\$11,008.82
Staff Supervision	\$72.30	\$500.00
Administration Expenses		
AGM & Planning Day Costs	\$891.14	\$308.99
Audit Fees	\$2,600.00	\$2,400.00
Bank Charges	\$226.00	\$257.34
BAS Rounding	-\$3.65	\$0.81
Cleaning	\$500.00	\$28.17
Computers & Printers	\$1,034.54	\$4,059.88
Consumables	\$3,205.56	\$4,882.32
Insurance	\$7,784.53	\$7,501.56
Internet access	\$808.32	\$1,081.30
Service Management Levy	\$16,726.62	\$27,326.00
Membership & Subscriptions	\$2,680.49	\$1,652.03
Position Advertisements	\$0.00	\$1,005.37
Postage	\$355.86	\$524.49
Printing & Photocopying	\$3,505.76	\$2,636.92
Publicity	\$1,553.26	\$1,194.66
Publications	\$0.00	\$3,439.09

**Mountains Outreach Community Service Inc**

**Profit & Loss [Last Year Analysis]**

**July 2011 through June 2012**

	<b>This Year</b>	<b>Last Year</b>
Repairs & Maintenance	\$813.18	\$713.63
Stationery & Office Supplies	\$1,888.77	\$2,520.14
Telephone	\$1,770.28	\$1,879.55
Mobile phone	\$986.15	\$1,457.80
Total Administration Expenses	<u>\$47,326.81</u>	<u>\$64,870.05</u>
Program Costs		
Corporate Overheads BF	\$2,994.40	\$0.00
Program Costs BF	\$4,768.84	\$0.00
Childcare	\$0.00	\$6,697.50
Children's Equipment	\$11,937.42	\$6,187.01
Community Development AF	\$0.00	\$219.59
Community Education LS	\$75.00	\$0.00
Mid-Mountains Hub Expenses	\$1,087.03	\$0.00
PY Playgroup Expenses	\$1,185.42	\$0.00
Craft Materials	\$703.59	\$1,997.79
Food	\$0.00	\$2,293.57
Excursions	\$0.00	\$32.27
Guest Speakers/Facilitators	\$1,620.91	\$3,693.02
Website fees	\$1,108.18	\$475.82
PY Retreat Costs	\$2,847.49	\$500.00
Aboriginal Projects	\$190.91	\$440.00
Equipment Hire	\$0.00	\$30.00
Elders Lunch Expenses	\$1,777.49	\$1,507.61
Mobile Display Stand	\$1,980.00	\$0.00
Women's Spirit Event	\$530.95	\$0.00
Equipment	\$1,240.58	\$2,174.59
Resources	\$89.17	\$114.09
3. Shelving & Storage Systems	\$5,118.81	\$0.00
Design Work	\$0.00	\$3,470.00
Rent		
Rent & Expenses	\$13,536.10	\$8,702.16
Venue Hire	\$7,361.59	\$11,242.09
Office Accomodation BF	\$1,131.20	\$0.00
Travel		
Travel	\$5,462.97	\$4,589.03
Travel Expenses	\$617.16	\$467.97
Contribution to Van Expenses	\$3,000.00	\$3,124.00
Capital/Equipment Expenses		
Depreciation of Equipment	\$0.00	\$1,158.65
Office Furniture	\$565.00	\$0.00
1 Fit-out	-\$2,641.82	\$4,305.46
Photocopier Rental	\$2,400.12	\$2,448.55
Van Expenses	\$7,449.82	\$8,113.00
Other Expenses		
Fundraising Expenses	\$0.00	\$8.13
Total Expenses	<u>\$558,302.99</u>	<u>\$555,882.98</u>
Operating Profit	<u>\$1,640.65</u>	<u>\$22,224.94</u>
Other Income		
Other Expenses		
Funds held till next fin year	\$0.00	\$22,040.63
Total Other Expenses	<u>\$0.00</u>	<u>\$22,040.63</u>
Net Surplus / (Deficit)	<u>\$1,640.65</u>	<u>\$184.31</u>



**Job Profit & Loss Statement**  
July 2011 through June 2012

Account Name	Selected Period	Year to Date
1	MOCS	
Income		
DHS CSGP Funding - MOCS	\$186,241.52	\$186,241.52
BMCC Community Donations	\$400.00	\$400.00
Bank Interest	\$6,323.19	\$6,323.19
Elders Lunch Donations	\$1,777.49	\$1,777.49
Service Management Levy	\$19,858.73	\$19,858.73
Reimburse MOCS Worker Costs	\$2,150.00	\$2,150.00
Reimburse Project Expenses	\$366.82	\$366.82
Contribution to Van Expenses	\$3,000.00	\$3,000.00
MOCS Membership Fees	\$22.00	\$22.00
Photocopying Contributions	\$1,777.73	\$1,777.73
Funds earned from last year	\$10,217.45	\$10,217.45
Total Income	\$232,134.93	\$232,134.93
Expense		
Wages & Salaries	\$154,157.55	\$154,157.55
Annual Leave Provision	\$3,889.16	\$3,889.16
Personal Leave Provision	\$2,114.67	\$2,114.67
LSL Provision	\$925.09	\$925.09
Staff Training	\$751.91	\$751.91
Superannuation	\$14,141.30	\$14,141.30
Workers Compensation	\$4,336.47	\$4,336.47
AGM & Planning Day Costs	\$891.14	\$891.14
Audit Fees	\$1,600.00	\$1,600.00
Bank Charges	\$226.00	\$226.00
BAS Rounding	\$3.65	\$3.65
Cleaning	\$600.00	\$600.00
Computers & Printers	\$1,034.54	\$1,034.54
Consumables	\$2,061.30	\$2,061.30
Insurance	\$4,384.53	\$4,384.53
Internet access	\$68.32	\$68.32
Service Management Levy	\$1,235.49	\$1,235.49
Membership & Subscriptions	\$355.86	\$355.86
Postage	\$1,718.76	\$1,718.76
Printing & Photocopying	\$1,394.17	\$1,394.17
Publicity	\$1,112.45	\$1,112.45
Stationery & Office Supplies	\$465.76	\$465.76
Telephone	\$127.33	\$127.33
Mobile phone	\$630.16	\$630.16
Children's Equipment	\$75.00	\$75.00
Community Education LS	\$1,087.03	\$1,087.03
Mid-Mountains Hub Expenses	\$1,185.42	\$1,185.42
PV Playgroup Expenses	\$600.00	\$600.00
Guest Speakers/Facilitators	\$403.64	\$403.64
Website fees	\$1,777.49	\$1,777.49
Elders Lunch Expenses	\$89.17	\$89.17
Resources	\$13,536.10	\$13,536.10
Rent & Expenses	\$1,094.09	\$1,094.09
Venue Hire	\$1,795.01	\$1,795.01
Travel	\$112.53	\$112.53
Travel Expenses	\$565.00	\$565.00
Office Furniture	\$2,400.12	\$2,400.12
Photocopier Rental	\$7,449.82	\$7,449.82
Van Expenses	\$231,027.35	\$231,027.35
Total Expense	\$1,107.58	\$1,107.58
Net Profit (Loss)		

**Job Profit & Loss Statement**  
July 2011 through June 2012

Account Name	Selected Period	Year to Date
2	BMOCCS	
Income		
BMCC Community Donations	\$1,500.00	\$1,500.00
DHS CS Funding - BMOCCS	\$83,187.52	\$83,187.52
Workers Compensation Claim	\$400.00	\$400.00
BMOCCS EC Teacher Funding	\$8,000.00	\$8,000.00
Reimburse MOCS Worker Costs	\$600.00	\$600.00
Reimburse Project Expenses	\$450.00	\$450.00
BMOCCS Service fees	\$37,783.00	\$37,783.00
Total Income	\$131,920.52	\$131,920.52
Expense		
Wages & Salaries	\$84,448.90	\$84,448.90
Relief Wages	\$528.77	\$528.77
Annual Leave Provision	\$3,937.88	\$3,937.88
Personal Leave Provision	\$4,423.15	\$4,423.15
LSL Provision	\$997.95	\$997.95
Staff Training	\$723.63	\$723.63
Superannuation	\$8,029.97	\$8,029.97
Workers Compensation	\$2,792.00	\$2,792.00
Audit Fees	\$500.00	\$500.00
Consumables	\$906.36	\$906.36
Insurance	\$1,700.00	\$1,700.00
Service Management Levy	\$8,150.00	\$8,150.00
Membership & Subscriptions	\$1,445.00	\$1,445.00
Printing & Photocopying	\$500.00	\$500.00
Publicity	\$159.09	\$159.09
Repairs & Maintenance	\$813.18	\$813.18
Telephone	\$250.00	\$250.00
Mobile phone	\$684.27	\$684.27
Children's Equipment	\$2,349.62	\$2,349.62
Craft Materials	\$283.79	\$283.79
Equipment	\$850.58	\$850.58
Venue Hire	\$6,131.14	\$6,131.14
Travel	\$227.03	\$227.03
Travel Expenses	\$45.46	\$45.46
Contribution to Van Expenses	\$1,000.00	\$1,000.00
Total Expense	\$131,877.57	\$131,877.57
Net Profit (Loss)	\$42.95	\$42.95
DET	DET Funding	
Income		
DET Early Chood Teacher Funds	\$2,513.50	\$2,513.50
Total Income	\$2,513.50	\$2,513.50
Expense		
Wages & Salaries	\$375.06	\$375.06
Relief Wages	\$1,999.22	\$1,999.22
Superannuation	\$76.62	\$76.62
Travel	\$62.60	\$62.60
Total Expense	\$2,513.50	\$2,513.50
Net Profit (Loss)	\$0.00	\$0.00

**Job Profit & Loss Statement**  
July 2011 through June 2012

Account Name	Selected Period	Year to Date
ACC12	Access Scan Funding	
Income		
ACCESS Funding	\$9,700.00	\$9,700.00
Total Income	\$9,700.00	\$9,700.00
Expense		
Wages & Salaries	\$3,925.75	\$3,925.75
Relief Wages	\$1,789.63	\$1,789.63
Staff Training	\$736.36	\$736.36
Superannuation	\$76.62	\$76.62
Children's Equipment	\$3,171.64	\$3,171.64
Total Expense	\$9,700.00	\$9,700.00
Net Profit (Loss)	\$0.00	\$0.00
3	MMM	
Income		
DHS CS Funding- MMM	\$106,776.51	\$106,776.51
MMM Service Fees	\$11,140.65	\$11,140.65
Total Income	\$117,917.16	\$117,917.16
Expense		
Wages & Salaries	\$49,272.78	\$49,272.78
Relief Wages	\$32,369.55	\$32,369.55
Annual Leave Provision	\$892.17	\$892.17
Personal Leave Provision	\$1,834.48	\$1,834.48
LSL Provision	\$788.06	\$788.06
Staff Training	\$706.00	\$706.00
Superannuation	\$6,473.24	\$6,473.24
Workers Compensation	\$3,728.00	\$3,728.00
Audit Fees	\$500.00	\$500.00
Consumables	\$260.80	\$260.80
Insurance	\$1,700.00	\$1,700.00
Service Management Levy	\$8,578.00	\$8,578.00
Printing & Photocopying	\$500.00	\$500.00
Telephone	\$500.00	\$500.00
Mobile phone	\$174.55	\$174.55
Children's Equipment	\$4,464.22	\$4,464.22
Craft Materials	\$390.80	\$390.80
Travel	\$2,316.57	\$2,316.57
Travel Expenses	\$411.89	\$411.89
Contribution to Van Expenses	\$2,000.00	\$2,000.00
Total Expense	\$117,861.11	\$117,861.11
Net Profit (Loss)	\$56.05	\$56.05

**Job Profit & Loss Statement**  
July 2011 through June 2012

Account Name	Selected Period	Year to Date
BF	Brighter Futures-Early In	
Income		
Brighter Futures - EI Funding	\$45,902.36	\$45,902.36
Total Income	\$45,902.36	\$45,902.36
Expense		
Wages & Salaries	\$27,432.15	\$27,432.15
Staff Wages BF	\$1,159.99	\$1,159.99
Annual Leave Provision	\$776.87	\$776.87
Personal Leave Provision	\$1,150.48	\$1,150.48
LSL Provision	\$639.91	\$639.91
Staff Training	\$374.55	\$374.55
Superannuation	\$2,441.89	\$2,441.89
Workers Compensation	\$519.90	\$519.90
Staff Supervision	\$72.30	\$72.30
Stationery & Office Supplies	\$776.32	\$776.32
Telephone	\$554.52	\$554.52
Corporate Overheads BF	\$2,994.40	\$2,994.40
Program Costs BF	\$4,768.84	\$4,768.84
Venue Hire	\$0.00	\$0.00
Office Accommodation BF	\$1,131.20	\$1,131.20
Travel	\$1,061.76	\$1,061.76
Travel Expenses	\$47.28	\$47.28
Total Expense	\$45,902.36	\$45,902.36
Net Profit (Loss)	\$0.00	\$0.00
BF Retreat	Brighter Futures Retreat	
Income		
BF - Retreat Funding	\$3,747.74	\$3,747.74
Total Income	\$3,747.74	\$3,747.74
Expense		
Wages & Salaries	\$2,998.20	\$2,998.20
3 Salary On-costs	\$749.54	\$749.54
Total Expense	\$3,747.74	\$3,747.74
Net Profit (Loss)	\$0.00	\$0.00

Job Profit & Loss Statement  
July 2011 through June 2012

Account Name	Selected Period	Year to Date
PBR	Paint the Blue Road	
Income		
BMCC Community Donations	\$1,200.00	\$1,200.00
Total Income	\$1,200.00	\$1,200.00
Expense		
Consumables	\$8.05	\$8.05
Printing & Photocopying	\$787.00	\$787.00
Equipment	\$390.00	\$390.00
Total Expense	\$1,185.05	\$1,185.05
Net Profit (Loss)	\$14.95	\$14.95

Reconciliation Project

RP		
Income		
Donations	\$1,975.39	\$1,975.39
Total Income	\$1,975.39	\$1,975.39
Expense		
Consumables	-\$30.95	-\$30.95
Craft Materials	\$29.00	\$29.00
Guest Speakers/Facilitators	\$700.00	\$700.00
Aboriginal Projects	\$190.91	\$190.91
Women's Spirit Event	\$530.95	\$530.95
Venue Hire	\$136.36	\$136.36
Total Expense	\$1,556.27	\$1,556.27
Net Profit (Loss)	\$419.12	\$419.12

Job Profit & Loss Statement  
July 2011 through June 2012

Account Name	Selected Period	Year to Date
CBPP	CB Partnership Project	
Income		
CBPP - Funding	\$4,404.05	\$4,404.05
Total Income	\$4,404.05	\$4,404.05
Expense		
Wages & Salaries	\$605.28	\$605.28
Children's Equipment	\$1,321.78	\$1,321.78
3. Shelving & Storage Systems	\$5,118.81	\$5,118.81
1 Fit-out	-\$2,641.82	-\$2,641.82
Total Expense	\$4,404.05	\$4,404.05
Net Profit (Loss)	\$0.00	\$0.00
CB one off	CommunityBuilders One Off	
Income		
DHS-One-Off Transition Funding	\$5,359.59	\$5,359.59
Total Income	\$5,359.59	\$5,359.59
Expense		
Wages & Salaries	\$2,648.01	\$2,648.01
Superannuation	\$27.04	\$27.04
Website fees	\$704.54	\$704.54
Mobile Display Stand	\$1,980.00	\$1,980.00
Total Expense	\$5,359.59	\$5,359.59
Net Profit (Loss)	\$0.00	\$0.00
PYRT5	Parenting Young Retreat	
Income		
PY Retreat Funding - Provision	\$3,168.40	\$3,168.40
Total Income	\$3,168.40	\$3,168.40
Expense		
Guest Speakers/Facilitators	\$320.91	\$320.91
PY Retreat Costs	\$2,847.49	\$2,847.49
Total Expense	\$3,168.40	\$3,168.40
Net Profit (Loss)	\$0.00	\$0.00